

Chopard



Writing Instruments

Roller “ Il Classico ”



A

B

C

D

SIZE: 14,6 CM

	BODY COLOUR	CAP COLOUR	TRIMS COLOUR
REFERENCES: A 95/8093	PALLADIUM LIGNE	PALLADIUM LIGNE	PALLADIUM
B 95/8092	WHITE RESIN WITH RED HEARTS ON RING AND TOP	WHITE RESIN	YELLOW GOLD
C 95/8089	PALLADIUM GRAIN D'ORGE	PALLADIUM GRAIN D'ORGE	PALLADIUM
D 95/8088	YELLOW GOLD GRAIN D'ORGE	YELLOW GOLD GRAIN D'ORGE	YELLOW GOLD

Writing Instruments

Roller “ Il Classico ”



A B C/D E F/G H I J K L M N

SIZE: 14,6 CM

REFERENCES:		BODY COLOUR	CAP COLOUR	TRIMS COLOUR
A	95/8030	PINK RUBBER	PINK RESIN	ROSE GOLD COLOUR
B	95/8031	BLACK RUBBER	PALLADIUM	PALLADIUM COLOUR
C	95/8033	PALLADIUM	PALLADIUM	PALLADIUM COLOUR
D	95/8044	PALLADIUM	BLACK RESIN	PALLADIUM COLOUR
E	95/8034	PINK RESIN	PINK RESIN	ROSE GOLD COLOUR
F	95/8036	BLACK RESIN	BLACK RESIN	PALLADIUM COLOUR
G	95/8043	BLACK RESIN	PALLADIUM	PALLADIUM COLOUR
H	95/8037	BLACK RESIN	BLACK RESIN	YELLOW GOLD COLOUR
I	95/8041	PINK RUBBER	PALLADIUM	PALLADIUM COLOUR
J	95/8050	ROSE GOLD	PINK RESIN	ROSE GOLD COLOUR
K	95/8054	CLARET RESIN	CLARET RESIN	YELLOW GOLD COLOUR
L	95/8067	CLARET RESIN	CLARET RESIN	PALLADIUM COLOUR
M	95/8015	BLACK RUBBER	BLACK RESIN	YELLOW GOLD COLOUR
N	95/8016	BLACK RUBBER	BLACK RESIN	PALLADIUM COLOUR

AVAILABLE IN DIAMONDS SET CLIP WITH 85 DIAMONDS (0.80 CT)

Writing Instruments

Fountain Pen “ Il Classico ”



A

B

C

SIZE: 14,6 CM

		BODY COLOUR	CAP COLOUR	TRIMS COLOUR
REFERENCES:	A	95/8095 PALLADIUM LIGNE	PALLADIUM LIGNE	PALLADIUM
	B	95/8090 YELLOW GOLD GRAIN D'ORGE	YELLOW GOLD GRAIN D'ORGE	YELLOW GOLD
	C	95/8091 PALLADIUM GRAIN D'ORGE	PALLADIUM GRAIN D'ORGE	PALLADIUM

Writing Instruments

Fountain Pen “ Il Classico ”



A B/C D/E F G H I J K L M N

SIZE: 14,6 CM

REFERENCES:	BODY COLOUR	CAP COLOUR	TRIMS COLOUR
A 95/8032	BLACK RUBBER	PALLADIUM	PALLADIUM COLOUR
B 95/8035	PALLADIUM	PALLADIUM	PALLADIUM COLOUR
C 95/8052	PALLADIUM	BLACK RESIN	PALLADIUM COLOUR
D 95/8038	BLACK RESIN	BLACK RESIN	PALLADIUM COLOUR
E 95/8051	BLACK RESIN	PALLADIUM	PALLADIUM COLOUR
F 95/8039	BLACK RESIN	BLACK RESIN	YELLOW GOLD COLOUR
G 95/8040	PINK RUBBER	PALLADIUM	PALLADIUM COLOUR
H 95/8042	PINK RUBBER	PINK RESIN	ROSE GOLD COLOUR
I 95/8053	ROSE GOLD	PINK RESIN	ROSE GOLD COLOUR
J 95/8055	CLARET RESIN	CLARET RESIN	YELLOW GOLD COLOUR
K 95/8068	CLARET RESIN	CLARET RESIN	PALLADIUM COLOUR
L 95/8069	PINK RESIN	PINK RESIN	ROSE GOLD COLOUR
M 95/8010	BLACK RUBBER	BLACK RESIN	YELLOW GOLD COLOUR
N 95/8011	BLACK RUBBER	BLACK RESIN	PALLADIUM COLOUR

AVAILABLE IN DIAMONDS SET CLIP WITH 85 DIAMONDS (0.80 CT)

Writing Instruments

Ball Point Pen “ Il Classico ”



A

B

C

D

E

F

SIZE: 14,4 CM

REFERENCES:		BODY COLOUR	CAP COLOUR	TRIMS COLOUR
A	95/8000	BLACK RUBBER	-	YELLOW GOLD
B	95/8001	BLACK RUBBER	-	PALLADIUM
C	95/8002	PALLADIUM	-	PALLADIUM
D	95/8003	YELLOW GOLD	-	YELLOW GOLD
E	95/8056	RED RUBBER	-	PALLADIUM
F	95/8065	RED RUBBER	-	YELLOW GOLD

AVAILABLE IN DIAMONDS SET CLIP WITH 85 DIAMONDS (0,80CT)

Writing Instruments

Ball Point Pen “Allegro”



A

B

C

D

E

F

SIZE: 14 CM

		BODY COLOUR	CAP COLOUR	TRIMS COLOUR
REFERENCES:	A 95/8100	BLACK RESIN	-	PALLADIUM
	B 95/8101	BLACK RESIN	-	YELLOW GOLD
	C 95/8102	PINK RESIN	-	PINK GOLD
	D 95/8103	RED RESIN	-	YELLOW GOLD
	E 95/8104	PALLADIUM LIGNE & BLACK RESIN	-	PALLADIUM
	F 95/8105	WHITE RESIN WITH RED HEARTS ON RING AND TOP	-	YELLOWGOLD

Writing Instruments

Ball Point Pen “Andante”



A

B

C

D

E

SIZE: 10,5 CM

REFERENCES:	BODY COLOUR	CAP COLOUR	TRIMS COLOUR
A 95/8107	BLACK RESIN	-	PALLADIUM
B 95/8108	BLACK RESIN	-	YELLOW GOLD
C 95/8109	PINK RESIN	-	PINK GOLD
D 95/8110	WHITE RESIN	-	YELLOW GOLD
E 95/8111	RED RESIN	-	YELLOW GOLD

Writing Instruments

Ball Point Pen “Vivace”



A

B

C

D

E

F

G

WITHOUT CLIP - SIZE: 9,6 CM

REFERENCES:		BODY COLOUR	CAP COLOUR	TRIMS COLOUR
A	95/8117	PALLADIUM	-	PALLADIUM
B	95/8118	YELLOW GOLD	-	YELLOW GOLD
C	95/8124	BLACK RESIN	-	YELLOW GOLD
D	95/8125	BLACK RESIN	-	PALLADIUM
E	95/8126	PINK RESIN	-	PINK GOLD
F	95/8127	WHITE RESIN	-	YELLOW GOLD
G	95/8128	RED RESIN	-	YELLOW GOLD

Writing Instruments

“Diamonds”



“ALLEGRO”

REFERENCES:	A	95/8119	PINK RESIN & PINK GOLD COLOUR TRIMS
	B	95/8120	PALLADIUM LIGNE & BLACK RESIN & PALLADIUM COLOUR TRIMS

“ANDANTE”

REFERENCES:	C	95/8121	PINK RESIN & PINK GOLD COLOUR TRIMS
	D	95/8122	BLACK RESIN & PALLADIUM COLOUR TRIMS
	E	95/8123	WHITE RESIN & YELLOW GOLD COLOUR TRIMS

CHOPARD WITH MOVING LETTER “ C ” (6 BRILLANTS 0,015 CT FC)

REFERENCE:	F	95/8200	ROLLER PALLADIUM BODY BLACK RESIN CAP PALLADIUM COLOUR TRIMS
------------	---	---------	---

Writing Instruments

“ Haute Joaillerie ”



SIZE: 14,6 CM

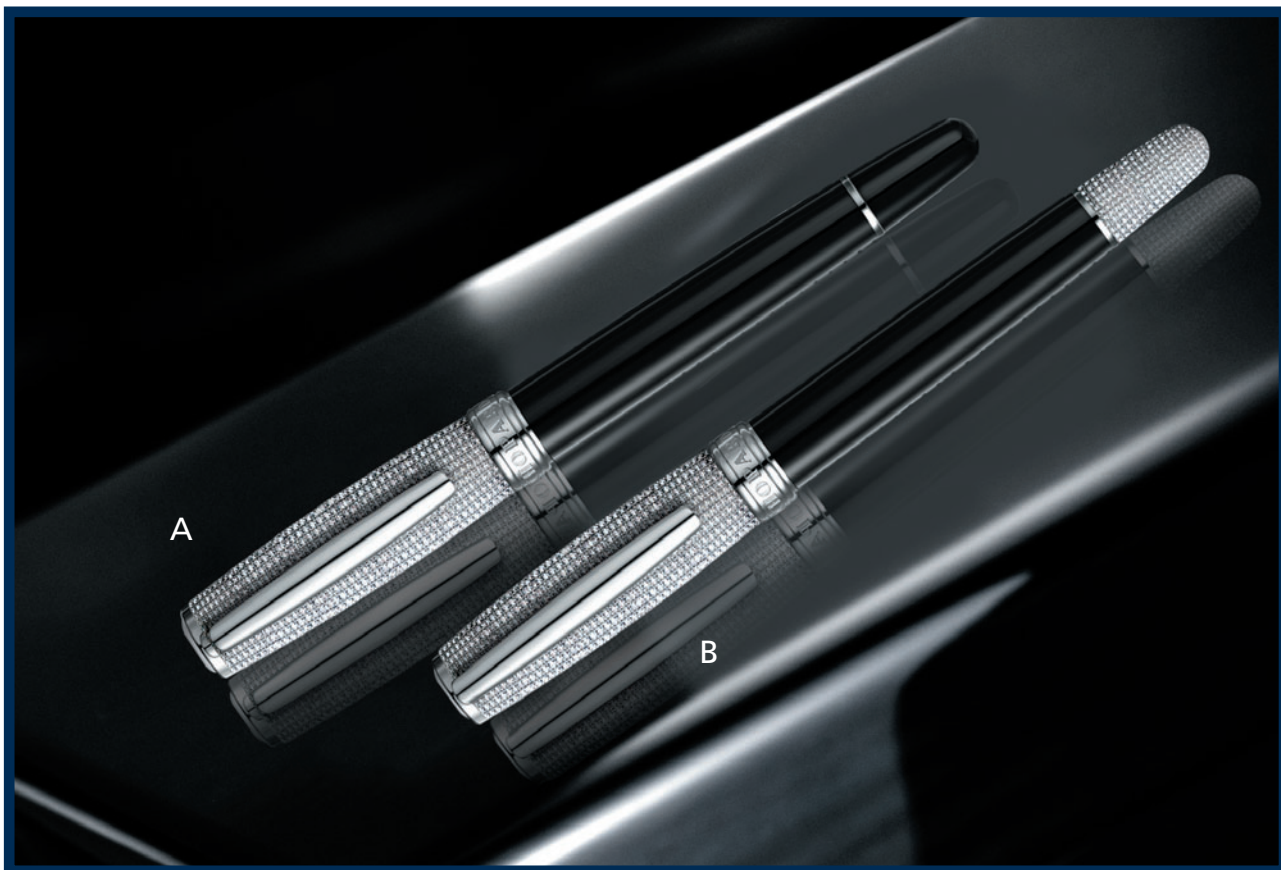
REFERENCE: 95/8045

BODY & CAP & END BODY SET, 3391 DIAMONDS, 21,63 CT FC

AVAILABLE ALSO IN YELLOW GOLD COLOUR AS FOUNTAIN PEN

Writing Instruments

“Haute Joaillerie”



SIZE: 14,6 CM

REFERENCES: A 95/8047 CAP SET, 1108 DIAMONDS, 10,71 CT FC
B 95/8046 CAP & END BODY SET, 1823 DIAMONDS, 13,04 CT FC

AVAILABLE ALSO IN YELLOW GOLD COLOUR
AS ROLLER OR FOUNTAIN PEN

Writing Instruments

Pen Holders



REFERENCES: A 95/7512 HOLDER FOR 2 PENS IN PINK LEATHER

B 95/7514 HOLDER FOR 2 PENS IN BLACK LEATHER

MATERIALS: LEATHER

Writing Instruments

Set Racing



REFERENCES: 95/8063

ROLLER

SET RACING 5 ROLLER NUMBERED (0-199)
RED, YELLOW, GREEN, BLUE, BLACK

95/8064

FOUNTAIN PEN

SET RACING 5 FOUNTAIN PENS NUMBERED (0-49)
RED, YELLOW, GREEN, BLUE, BLACK

CAN BE DELIVERED UNTIL STOCK RUNS OUT

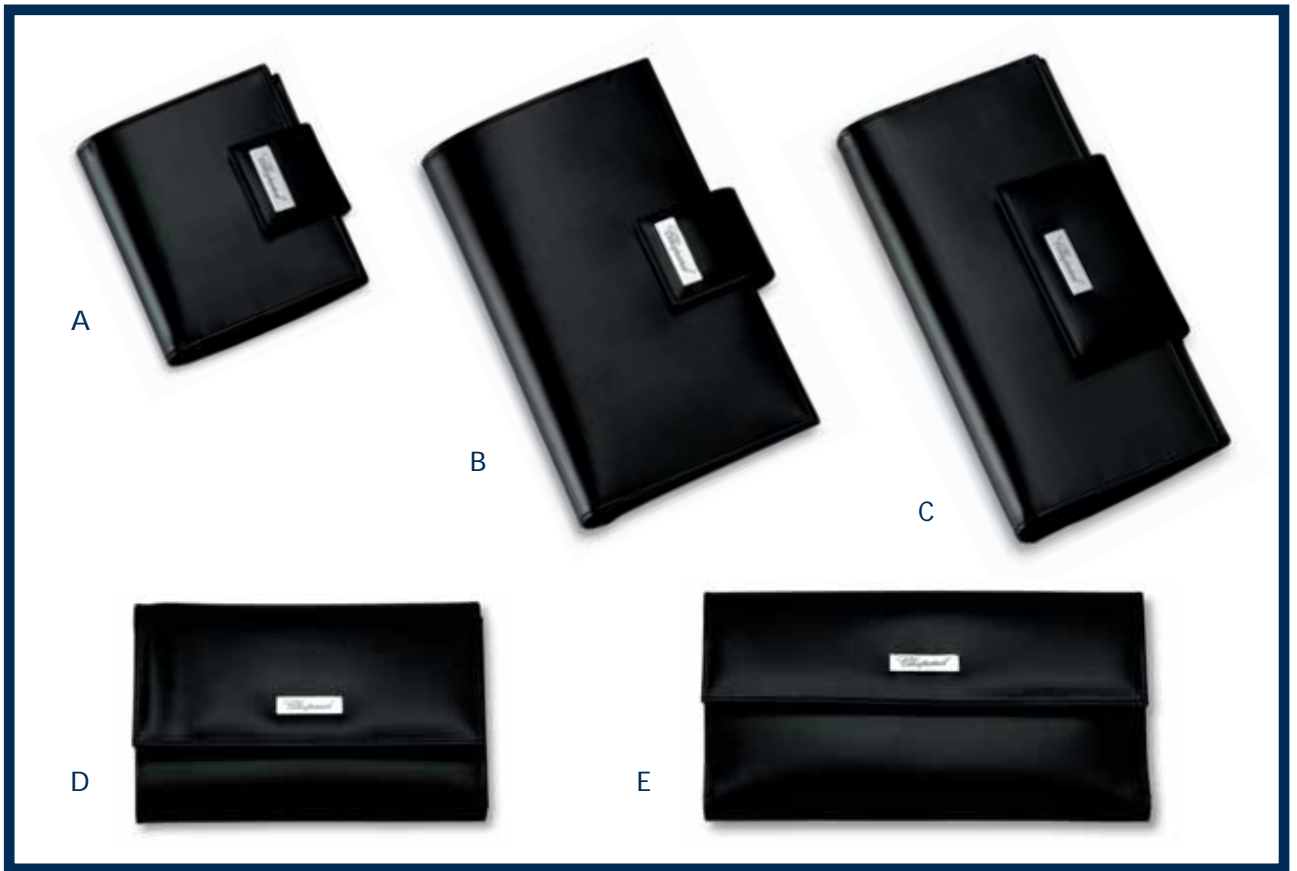
Leather Collection in Pink



- REFERENCES: A 95/7500 SMALL VERTICAL LEATHER WALLET PINK (10X8X2CM)
3 CREDIT CARD COMPARTMENTS ON THE LEFT SIDE AND 1 COMPARTMENT FOR COINS ON THE RIGHT SIDE AND 1 SUBDIVISION FOR PAPER MONEY
- B 95/7502 MEDIUM VERTICAL LEATHER WALLET PINK (11X17,5X2CM)
8 CREDIT CARD COMPARTMENTS ON THE LEFT SIDE AND 1 COMPARTMENT FOR COINS ON THE RIGHT SIDE AND 1 SUBDIVISION FOR PAPER MONEY
- C 95/7504 LARGE VERTICAL LEATHER WALLET PINK (13X10X1,5CM)
3 FOLDS WALLET, 14 CREDIT CARD COMPARTMENTS, 5 SUBDIVISIONS AND 1 COMPARTMENT FOR COINS
- D 95/7506 MEDIUM HORIZONTAL LEATHER WALLET PINK (16X11X3CM)
7 CREDIT CARD COMPARTMENTS AND 3 LARGE COMPARTMENTS ON THE LEFT SIDE, 1 COMPARTMENT FOR COINS AND 2 LARGE COMPARTMENTS IN THE MIDDLE AND 1 SUBDIVISION FOR PAPER MONEY
- E 95/7508 LARGE HORIZONTAL LEATHER WALLET PINK (19X11X3CM)
FRONT: 1 LARGE COMPARTMENT FOR COINS
BACK: 6 CREDIT CARD COMPARTMENTS AND 1 LARGE COMPARTMENT ON THE LEFT SIDE, 2 LARGES COMPARTMENTS ON THE RIGHT SIDE

MATERIALS: CALF SKIN LEATHER, MADE IN ITALY

Leather Collection in Black



- REFERENCES: A 95/7501 SMALL VERTICAL LEATHER WALLET BLACK (10X8X2CM)
3 CREDIT CARD COMPARTMENTS ON THE LEFT SIDE AND 1 COMPARTMENT FOR COINS ON THE RIGHT SIDE AND 1 SUBDIVISION FOR PAPER MONEY
- B 95/7503 MEDIUM VERTICAL LEATHER WALLET BLACK (11X17,5X2CM)
8 CREDIT CARD COMPARTMENTS ON THE LEFT SIDE AND 1 COMPARTMENT FOR COINS ON THE RIGHT SIDE AND 1 SUBDIVISION FOR PAPER MONEY
- C 95/7505 LARGE VERTICAL LEATHER WALLET BLACK (13X10X1,5CM)
3 FOLDS WALLET, 14 CREDIT CARD COMPARTMENTS, 5 SUBDIVISIONS AND 1 COMPARTMENT FOR COINS
- D 95/7507 MEDIUM HORIZONTAL LEATHER WALLET BLACK (16X11X3CM)
7 CREDIT CARD COMPARTMENTS AND 3 LARGE COMPARTMENTS ON THE LEFT SIDE, 1 COMPARTMENT FOR COINS AND 2 LARGE COMPARTMENTS IN THE MIDDLE AND 1 SUBDIVISION FOR PAPER MONEY
- E 95/7509 LARGE HORIZONTAL LEATHER WALLET BLACK (19X11X3CM)
FRONT: 1 LARGE COMPARTMENT FOR COINS
BACK: 6 CREDIT CARD COMPARTMENTS AND 1 LARGE COMPARTMENT ON THE LEFT SIDE, 2 LARGES COMPARTMENTS ON THE RIGHT SIDE

MATERIALS: CALF SKIN LEATHER, MADE IN ITALY

Ladies Diaries



REFERENCES:	A	95/7058	SMALL DIARY PINK (14X11,5X3,5CM) 4 VISIT CARD COMPARTMENTS AND 2 SUBDIVISIONS ON THE LEFT SIDE
	B	95/7059	SMALL DIARY SKY BLUE (14X11,5X3,5CM) 4 VISIT CARD COMPARTMENTS AND 2 SUBDIVISIONS ON THE LEFT SIDE
	C	95/7060	SMALL DIARY CLARET (14X11,5X3,5CM) 4 VISIT CARD COMPARTMENTS AND 2 SUBDIVISIONS ON THE LEFT SIDE
	D	95/7061	MEDIUM DIARY PINK (22X17X3,5CM) 5 VISIT CARD COMPARTMENTS AND 3 SUBDIVISIONS ON THE LEFT SIDE
	E	95/7062	MEDIUM DIARY SKY BLUE (22X17X3,5CM) 5 VISIT CARD COMPARTMENTS AND 3 SUBDIVISIONS ON THE LEFT SIDE
	F	95/7063	MEDIUM DIARY CLARET (22X17X3,5 CM) 5 VISIT CARD COMPARTMENTS AND 3 SUBDIVISIONS ON THE LEFT SIDE
	G	95/7064	LARGE DIARY PINK (25,5X21X4CM) 2 VISIT CARD COMPARTMENTS AND 1 SUBDIVISION ON THE LEFT SIDE
	H	95/7065	LARGE DIARY SKY BLUE (25,5X21X4CM) 2 VISIT CARD COMPARTMENTS AND 1 SUBDIVISION ON THE LEFT SIDE
	I	95/7066	LARGE DIARY CLARET (25,5X21X4CM) 2 VISIT CARD COMPARTMENTS AND 1 SUBDIVISION ON THE LEFT SIDE

MATERIALS: CALF SKIN LEATHER, MADE IN ITALY

COLOUR: PINK, SKY BLUE, CLARET

Wallets



- REFERENCES:
- | | | |
|---|----------|---|
| A | 95/7067* | SMALL LEATHER WALLET PINK (10X8X2CM)
3 CREDIT CARD COMPARTMENTS ON THE LEFT SIDE AND 1 COMPARTMENT FOR COINS ON THE RIGHT SIDE AND 1 SUBDIVISION FOR PAPER MONEY |
| B | 95/7068 | SMALL LEATHER WALLET SKY BLUE (10X8X2CM)
3 CREDIT CARD COMPARTMENTS ON THE LEFT SIDE AND 1 COMPARTMENT FOR COINS ON THE RIGHT SIDE AND 1 SUBDIVISION FOR PAPER MONEY |
| C | 95/7069 | SMALL LEATHER WALLET CLARET (10X8X2CM)
3 CREDIT CARD COMPARTMENTS ON THE LEFT SIDE AND 1 COMPARTMENT FOR COINS ON THE RIGHT SIDE AND 1 SUBDIVISION FOR PAPER MONEY |
| D | 95/7070* | MEDIUM LEATHER WALLET PINK (11X17,5X2CM)
8 CREDIT CARD COMPARTMENTS ON THE LEFT SIDE AND 1 COMPARTMENT FOR COINS ON THE RIGHT SIDE AND 1 SUBDIVISION FOR PAPER MONEY |
| E | 95/7071 | MEDIUM LEATHER WALLET SKY BLUE (11X17,5X2CM)
8 CREDIT CARD COMPARTMENTS ON THE LEFT SIDE AND 1 COMPARTMENT FOR COINS ON THE RIGHT SIDE AND 1 SUBDIVISION FOR PAPER MONEY |
| F | 95/7072 | MEDIUM LEATHER WALLET CLARET (11X17,5X2CM)
8 CREDIT CARD COMPARTMENTS ON THE LEFT SIDE AND 1 COMPARTMENT FOR COINS ON THE RIGHT SIDE AND 1 SUBDIVISION FOR PAPER MONEY |
| G | 95/7073* | LARGE LEATHER WALLET PINK (13X10X1,5CM)
3 FOLDS WALLET, 14 CREDIT CARD COMPARTMENTS, 2 SUBDIVISIONS FOR PAPER MONEY AND 1 COMPARTMENT FOR COINS |
| H | 95/7074 | LARGE LEATHER WALLET SKY BLUE (13X10X1,5CM)
3 FOLDS WALLET, 14 CREDIT CARD COMPARTMENTS, 2 SUBDIVISIONS FOR PAPER MONEY AND 1 COMPARTMENT FOR COINS |
| I | 95/7075 | LARGE LEATHER WALLET CLARET (13X10X1,5CM)
3 FOLDS WALLET, 14 CREDIT CARD COMPARTMENTS, 2 SUBDIVISIONS FOR PAPER MONEY AND 1 COMPARTMENT FOR COINS |

MATERIALS: CALF SKIN LEATHER, MADE IN ITALY
COLOUR: PINK, SKY BLUE, CLARET

*UPON STOCK AVAILABILITY

Ladies Leather Accessories



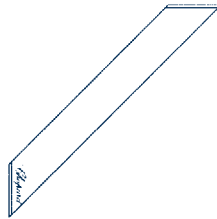
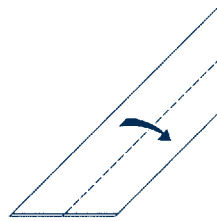
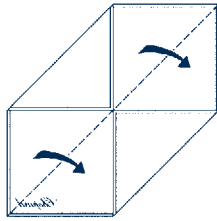
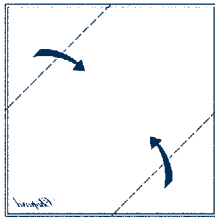
- REFERENCES: A 95/7078 A4 FOLDER CLARET (32X22,5X1,5CM)
B 95/7076 A4 FOLDER PINK (32X22,5X1,5CM)
C 95/7077 A4 FOLDER SKY BLUE (32X22,5X1,5CM)
D 95/7083 LAPTOP HOLDER PINK (34X29X6CM)
E 95/7084 LAPTOP HOLDER SKY BLUE (34X29X6CM)
F 95/7085 LAPTOP HOLDER CLARET (34X29X6CM)

MATERIALS: CALF SKIN LEATHER,MADE IN ITALY

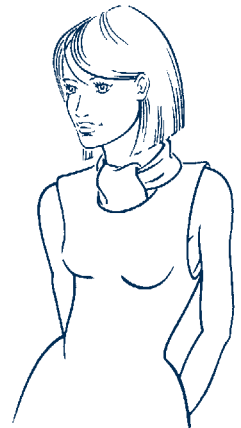
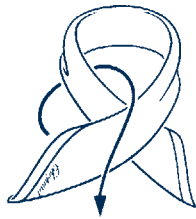
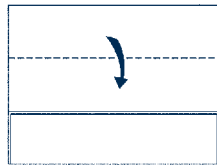
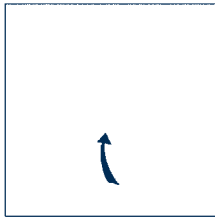
COLOUR: PINK, SKY BLUE, CLARET

The art of knotting a scarf

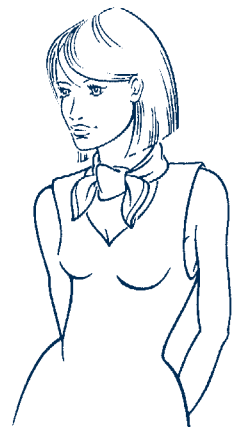
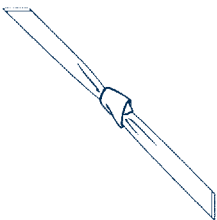
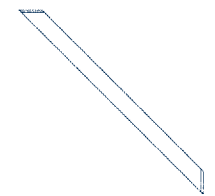
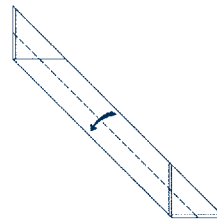
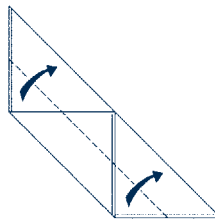
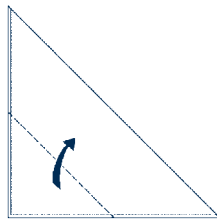
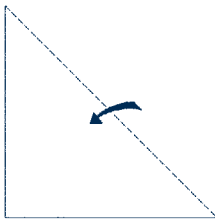
SIMPLE KNOT



CLASSIC KNOT



BUTTERFLY KNOT

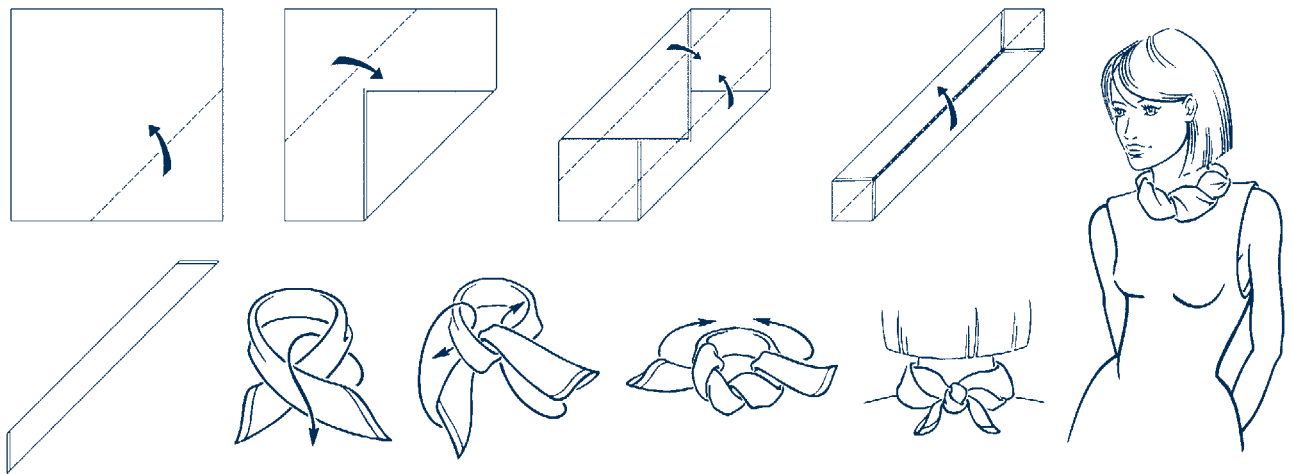


ADVICE ON CARE

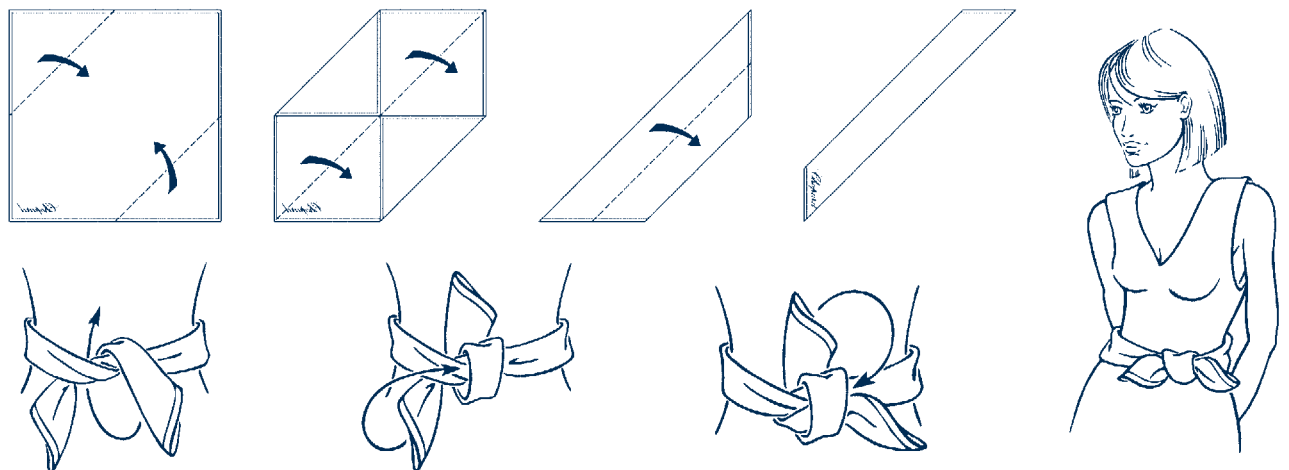
WE SUGGEST THAT YOU UNTIE YOUR SCARF KNOT AFTER EACH USE. IF IT IS CRUMPLED YOU CAN GENTLY IRON IT UNDER A LUKE WARM HEAT AND IT WILL NATURALLY RECOVER ITS SHAPE. BE CAREFUL WITH FRAGRANCES ON THE SILK, THESE PRODUCTS CONTAIN ALCOHOL THAT CAN DAMAGE THE COLOURS. FINALLY WE HIGHLY RECOMMEND THAT YOU SEND YOUR SCARF TO THE DRY CLEANERS.

The art of knotting a scarf

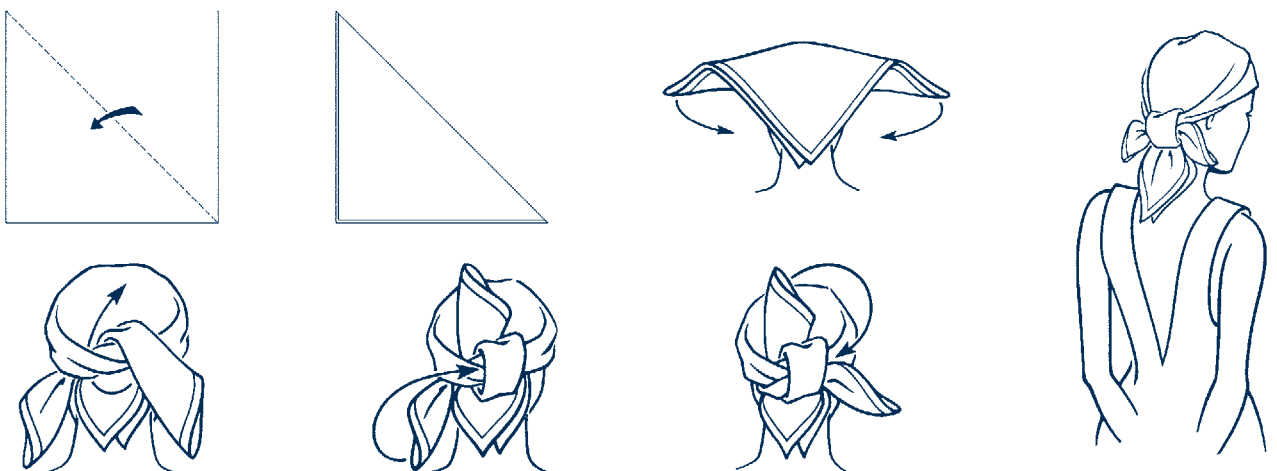
NECKLACE KNOT



WAISTBAND KNOT



HAT KNOT



ADVICE ON CARE

WE SUGGEST THAT YOU UNTIE YOUR SCARF KNOT AFTER EACH USE. IF IT IS CRUMPLED YOU CAN GENTLY IRON IT UNDER A LUKE WARM HEAT AND IT WILL NATURALLY RECOVER ITS SHAPE. BE CAREFUL WITH FRAGRANCES ON THE SILK, THESE PRODUCTS CONTAIN ALCOHOL THAT CAN DAMAGE THE COLOURS. FINALLY WE HIGHLY RECOMMEND THAT YOU SEND YOUR SCARF TO THE DRY CLEANERS.

Happy Snow



HAPPY SNOW SCARVES 50X50 CM

REFERENCES:	95/1203281/5	BEIGE / CORAL
	95/1203281/1	SKY BLUE / WHITE
	95/1203281/2	FUCHSIA / RED
	95/1203281/11	TURQUOISE / YELLOW

MATERIALS: 100% TWILL SILK, MADE IN ITALY



Logo



LOGO SCARVES 50X50 CM

REFERENCES:	95/5420/7	WHITE / RED
	95/5420/78	IVORY / LILAC
	95/5420/79	IVORY / PINK
	95/5420/3	APPLE / SKY BLUE
	95/5420/9	PINK / FUCHSIA
	95/5420/6	PEARL / GREY

MATERIALS: 100% TWILL SILK, MADE IN ITALY



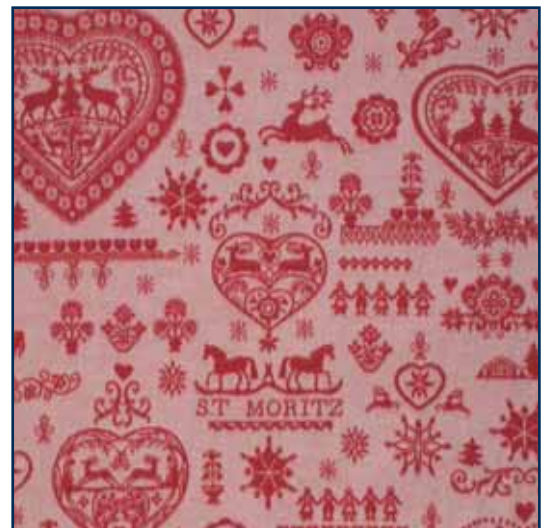
Cashmere Shawls



CASHMERE SHAWLS 140X140 CM

REFERENCES:	95/1204261/7	WHITE / GREY
	95/1204261/1	WHITE / BEIGE
	95/1204261/2	WHITE / RED

MATERIALS: 100% CASHMERE, MADE IN ITALY



Logo Double Satin



LOGO DOUBLE SATIN HEADSCARVES 70X210 CM

REFERENCES:	95/1207012/2	BLACK / ORANGE
	95/1207012/21	BLACK / FUCHSIA
	95/1207012/8	BLACK / VIOLET
	95/1207012/6	BLACK
	95/1207012/3	BLACK / GREEN

MATERIALS: 18% SILK, 82% VISCOSE, MADE IN ITALY



Double Logo Stoles



DOUBLE LOGO STOLES WITH FRINGE 70X180 CM

REFERENCES:	95/1205022/6	BLACK
	95/1205022/3	LIGHT GREEN
	95/1205022/1	SKY BLUE
	95/1205022/2	ORANGE
	95/1205022/21	PINK

MATERIALS: 35% SILK, 30% WOOL, 35% CASHMERE
MADE IN ITALY



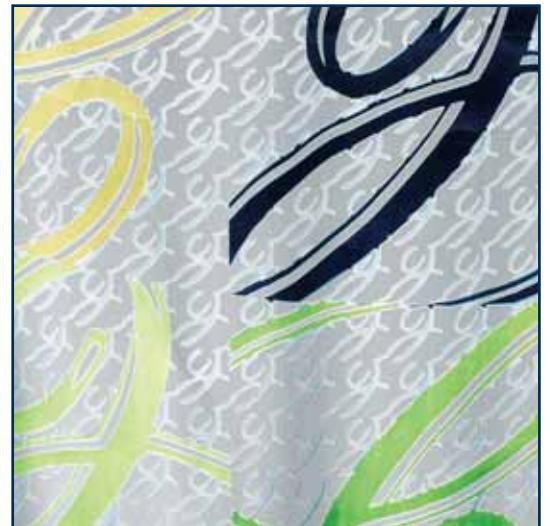
Logomania Dévoré



LOGOMANIA DEVORE STOLES 70X200 CM

REFERENCES:	95/1207011/11	BLUE
	95/1207011/1	NAVY BLUE
	95/1207011/21	FUCHSIA
	95/1207011/8	LILAC
	95/1207011/6	BLACK

MATERIALS: 100% SATIN SILK DEVORE, MADE IN ITALY



Lifestyle



LIFESTYLE SCARVES 90X90 CM

REFERENCES:	95/1202242/6	BLACK
	95/1202242/2	CORAL
	95/1202242/21	ORANGE
	95/1202242/8	LILAC
	95/1202242/1	SKY BLUE
	95/1202241/12	PASTEL PINK

MATERIALS: 100% TWILL SILK, MADE IN ITALY



“ C ” Logo



“ C ” LOGO SCARVES 90X90 CM

REFERENCES:	95/1202011/71	WHITE / SKY BLUE
	95/1202011/7	WHITE / TURQUOISE
	95/1202011/6	BLACK / ROYAL BLUE
	95/1202011/2	PINK / FUCHSIA
	95/1202011/3	APPLE / EMERALD
	95/1202011/4	LEMON / ORANGE

MATERIALS: 100% TWILL SILK, MADE IN ITALY





GSTAAD SCARVES 90X90CM

REFERENCES:	95/1202261/1	NAVY BLUE
	95/1202261/21	RED / BEIGE
	95/1202261/11	SKY BLUE
	95/1202261/3	GREEN
	95/1202261/2	RED / WHITE

MATERIALS: 100 % TWILL SILK, MADE IN ITALY



Logo Dévoré



LOGO DEVORE STOLES 70X200CM

REFERENCES:	95/1205016/10	FUCHSIA
	95/1205016/4	YELLOW
	95/1205016/12	TURQUOISE
	95/1205016/15	ORANGE
	95/1205016/8	LILAC
	95/1205016/6	BLACK
	95/1205016/11	CLARET
	95/1205016/7	WHITE
	95/1205016/13	GREY
	95/1205016/1	BLUE

MATERIALS: 70% SILK, 30% VISCOSE, MADE IN ITALY



Art Déco Taffetas



ART DECO TAFFETAS 20X220CM

REFERENCES:	95/1205019/6	BLACK
	95/1205019/16	PLUM
	95/1205019/4	GOLD
	95/1205019/11	CLARET

MATERIALS: 100% TAFFETAS SILK, MADE IN ITALY



CAN BE DELIVERED UNTIL STOCK RUNS OUT

Mid-season Logomania



MID-SEASON LOGOMANIA STOLES 55X200CM

REFERENCES:	95/1205020/10	PINK / ORANGE
	95/1205020/7	WHITE / PERLE
	95/1205020/1	TURQUOISE / ACQUA
	95/1205020/5	WHITE / BEIGE
	95/1205020/3	APPLE GREEN / LEMON

MATERIALS: 100 % SILK, MADE IN ITALY



Butterflies Shawls & Headscarves



BUTTERFLIES SHAWLS 140X140CM

REFERENCES:	95/2432/1	GREY
	95/2432/2	BLACK
	95/2432/3	NAVY BLUE
	95/2432/4	ORANGE
	95/2432/5	BEIGE
	95/2432/6	BROWN

MATERIALS: 100% CHIFFON SILK, MADE IN ITALY

BUTTERFLIES HEADSCARVES 200X70CM

REFERENCES:	95/2432/1-0	GREY
	95/2432/2-0	BLACK
	95/2432/3-0	NAVY BLUE
	95/2432/4-0	ORANGE
	95/2432/5-0	BEIGE
	95/2432/6-0	BROWN

MATERIALS: 100% CHIFFON SILK, MADE IN ITALY

Headscarves - Wild Rose



HEADSCARVES- WILD ROSE 70X200 CM

REFERENCES: 95/1202141/9 PASTEL PINK

95/1202141/1 TURQUOISE

95/1202141/6 BLACK

95/1202141/7 CREAM

95/1202141/5 BEIGE

MATERIALS: 100% CHIFFON SILK, MADE IN ITALY



CAN BE DELIVERED UNTIL STOCK RUNS OUT

Evening Bags



REFERENCES: 95/9697 EVENING BAG, ROSE JACQUARD BROWN-LIGHT SALMON, GOLD-PLATED CLASP
95/9698 EVENING BAG, ROSE JACQUARD BLACK-RED, SILVER-PLATED CLASP
95/9699 EVENING BAG, LOGO JACQUARD BLACK-GOLD, SILVER-PLATED CLASP

MATERIALS: SILK - SOLID SILVER CLASP WITH WHITE GOLD OR YELLOW GOLD PLATING

DIMENSIONS: BAG: 26 X 10 X 4.5 CM
BOX : 26 X 15.5 X 11 CM

CAN BE DELIVERED UNTIL STOCK RUNS OUT

Gentlemen Logo Stole



GENTLEMEN LOGO STOLES 55X200CM

REFERENCES:	95/1206171/5	DARK BROWN
	95/1206171/11	CLARET
	95/1206171/51	CAMEL
	95/1206171/6	BLACK

MATERIALS: 50% SILK, 50% CASHMIRE
MADE IN ITALY



Key Rings



REFERENCES: A 95/200940 KEY RING "C" REVOLVING BRASS WITH PALLADIUM FINISH,
MADE IN ITALY

B 95/7118 KEY RING TRIO LAITON COLORED IN YELLOW GOLD, PALLADIUM &
ROSE GOLD DELIVERED IN A ROUND BOX, MADE IN ITALY

Phone Straps Set



REFERENCE: 95/7117 SET FOR HER WITH MOBILE HOLDER

COLOURS: BLACK, TURQUOISE AND PINK TWILLY

MATERIALS: BRASS WITH PALLADIUM FINISH, MADE IN ITALY

Phone Straps Logomania



REFERENCES:	A	95/7092	SKY BLUE
	B	95/7091	YELLOW
	C	95/7090	GREEN PASTEL
	D	95/7094	PINK
	E	95/7089	BEIGE
	F	95/7093	BLACK

Phone Straps Racing



REFERENCES: 95/7049 PHONE STRAP BLACK, LEATHER & RUBBER, MADE IN ITALY
95/7050 PHONE STRAP PINK, LEATHER & RUBBER, MADE IN ITALY

Key Ring Racing



REFERENCE: 95/200937 KEY RING RACING

MATERIALS: STEEL AND RUBBER, MADE IN ITALY

DIMENSIONS: 10 CM LENGTH, Ø 4 CM, 44 G, BLACK

Key Rings Cube



REFERENCES: 95/200938 YELLOW GOLD PLATED

95/200939 WHITE GOLD PLATED

MATERIALS: STERLING SILVER 925

WEIGHT: 28 G

Bracelet



REFERENCES:	95/1300	BRACELET RACING	BLACK
	95/1301	BRACELET RACING	RED
	95/1302	BRACELET RACING	PINK

MATERIALS: STERLING SILVER AND RUBBER, MADE IN ITALY

CAN BE DELIVERED UNTIL STOCK RUNS OUT

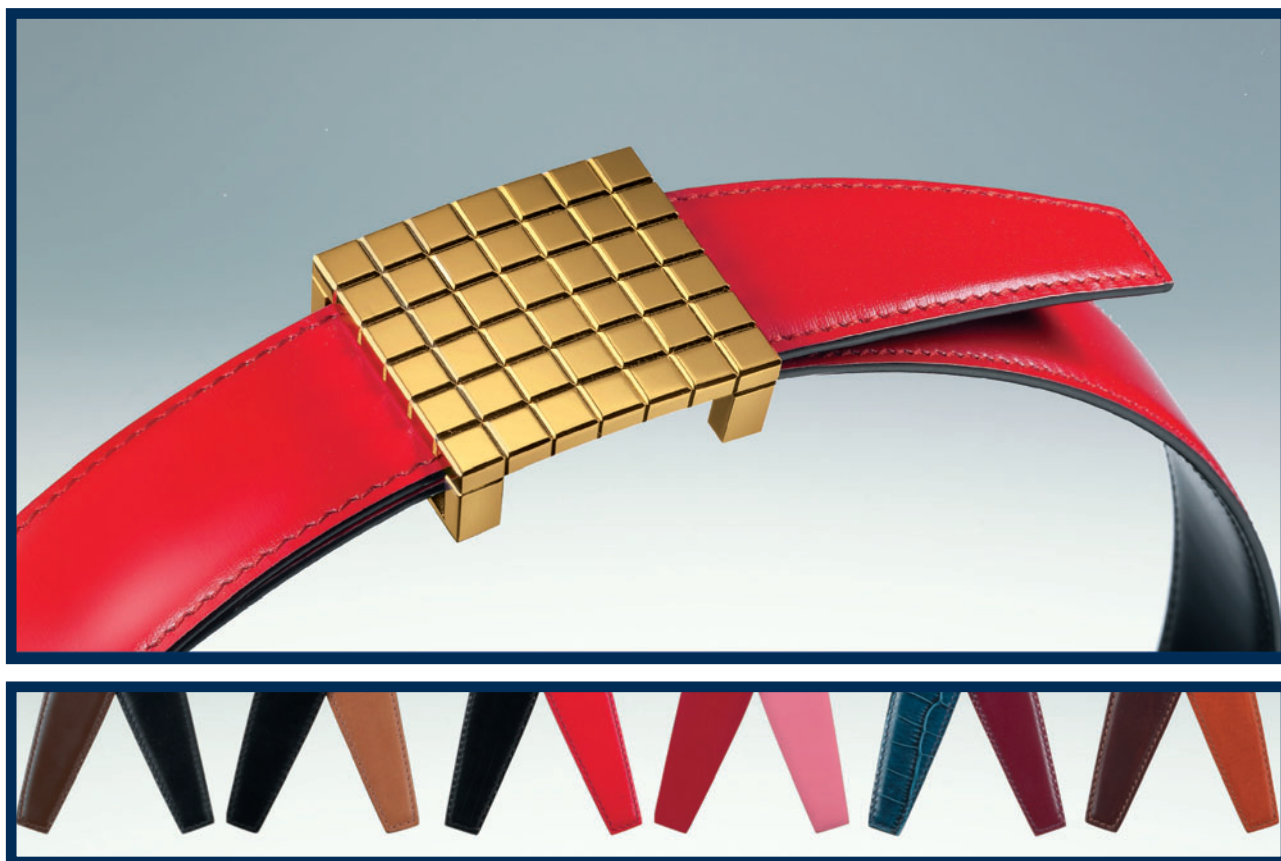
José Carreras Foundation Candle



REFERENCE: 95/200936
MATERIALS: PARRAFIN BASE, PEONY AROMA
DIMENSIONS: Ø 80 MM X 105 MM
WEIGHT: 280 G

CAN BE DELIVERED UNTIL STOCK RUNS OUT

Chopard Belt - Full Buckle

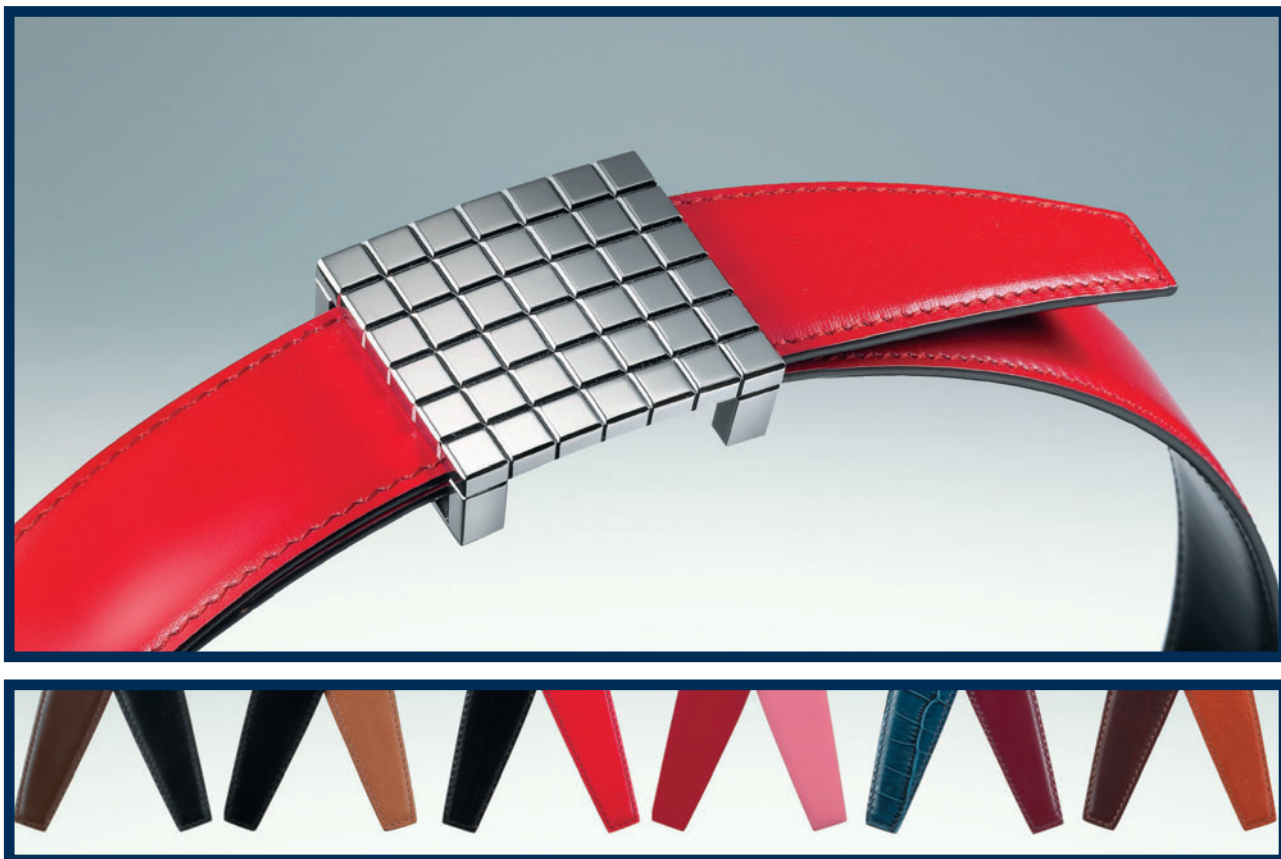


	CHOPARD BELT	LEATHER ONLY		BUCKLE ONLY	
REFERENCES:	95/1033033/165	95/2234/165	SMALL	- BLACK / BROWN	95/1033033
	95/1033033/167	95/2234/167	SMALL	- BLACK / BEIGE	
	95/1033033/162	95/2234/162	SMALL	- BLACK / RED	
	95/1033033/122	95/2234/122	SMALL	- RED / PINK	
	95/1033033/154	95/2234/154	SMALL	- BROWN / YELLOW	
	95/1033033/265	95/2234/265	MEDIUM	- BLACK / BROWN	
	95/1033033/267	95/2234/267	MEDIUM	- BLACK / BEIGE	
	95/1033033/262	95/2234/262	MEDIUM	- BLACK / RED	
	95/1033033/212	95/2234/212	MEDIUM	- BLUE / RED	
	95/1033033/365	95/2234/365	LARGE	- BLACK / BROWN	
	95/1033033/367	95/2234/367	LARGE	- BLACK / BEIGE	
	95/1033033/362	95/2234/362	LARGE	- BLACK / RED	
	95/1033033/322	95/2234/322	LARGE	- RED / PINK	
	95/1033033/354	95/2234/354	LARGE	- BROWN / YELLOW	
	95/1033033/465	95/2234/465	EXTRA LARGE	- BLACK / BROWN	
	95/1033033/467	95/2234/467	EXTRA LARGE	- BLACK / BEIGE	
	95/1033033/462	95/2234/462	EXTRA LARGE	- BLACK / RED	
	95/1033033/454	95/2234/454	EXTRA LARGE	- BROWN / YELLOW	

MATERIALS: STERLING SILVER BUCKLE, REVERSIBLE CALF LEATHER BELT
 DIMENSIONS: SMALL - 65 CM
 MEDIUM - 80 CM
 LARGE - 95 CM
 EXTRA LARGE - 110 CM

CAN BE DELIVERED UNTIL STOCK RUNS OUT

Chopard Belt - Full Buckle



	CHOPARD BELT	LEATHER ONLY		BUCKLE ONLY	
REFERENCES:	95/1033031/165	95/2234/165	SMALL	- BLACK / BROWN	95/1033031
	95/1033031/167	95/2234/167	SMALL	- BLACK / BEIGE	
	95/1033031/162	95/2234/162	SMALL	- BLACK / RED	
	95/1033031/112	95/2234/112	SMALL	- BLUE / RED	
	95/1033031/154	95/2234/154	SMALL	- BROWN / YELLOW	
	95/1033031/265	95/2234/265	MEDIUM	- BLACK / BROWN	
	95/1033031/267	95/2234/267	MEDIUM	- BLACK / BEIGE	
	95/1033031/262	95/2234/262	MEDIUM	- BLACK / RED	
	95/1033031/365	95/2234/365	LARGE	- BLACK / BROWN	
	95/1033031/367	95/2234/367	LARGE	- BLACK / BEIGE	
	95/1033031/362	95/2234/362	LARGE	- BLACK / RED	
	95/1033031/322	95/2234/322	LARGE	- RED / PINK	
	95/1033031/312	95/2234/312	LARGE	- BLUE / RED	
	95/1033031/465	95/2234/465	EXTRA LARGE	- BLACK / BROWN	
	95/1033031/467	95/2234/467	EXTRA LARGE	- BLACK / BEIGE	
	95/1033031/462	95/2234/462	EXTRA LARGE	- BLACK / RED	
	95/1033031/412	95/2234/412	EXTRA LARGE	- BLUE / RED	

MATERIALS: STERLING SILVER BUCKLE, REVERSIBLE CALF LEATHER BELT
 DIMENSIONS: SMALL - 65 CM
 MEDIUM - 80 CM
 LARGE - 95 CM
 EXTRA LARGE - 110 CM

CAN BE DELIVERED UNTIL STOCK RUNS OUT

Chopard Belt - Empty Buckle



	CHOPARD BELT	LEATHER ONLY		BUCKLE ONLY	
REFERENCES:	95/1033034/165	95/2234/165	SMALL	- BLACK / BROWN	95/1033034
	95/1033034/167	95/2234/167	SMALL	- BLACK / BEIGE	
	95/1033034/162	95/2234/162	SMALL	- BLACK / RED	
	95/1033034/122	95/2234/122	SMALL	- RED / PINK	
	95/1033034/154	95/2234/154	SMALL	- BROWN / YELLOW	
	95/1033034/265	95/2234/265	MEDIUM	- BLACK / BROWN	
	95/1033034/267	95/2234/267	MEDIUM	- BLACK / BEIGE	
	95/1033034/262	95/2234/262	MEDIUM	- BLACK / RED	
	95/1033034/212	95/2234/212	MEDIUM	- BLUE / RED	
	95/1033034/365	95/2234/365	LARGE	- BLACK / BROWN	
	95/1033034/367	95/2234/367	LARGE	- BLACK / BEIGE	
	95/1033034/362	95/2234/362	LARGE	- BLACK / RED	
	95/1033034/322	95/2234/322	LARGE	- RED / PINK	
	95/1033034/354	95/2234/354	LARGE	- BROWN / YELLOW	
	95/1033034/465	95/2234/465	EXTRA LARGE	- BLACK / BROWN	
	95/1033034/467	95/2234/467	EXTRA LARGE	- BLACK / BEIGE	
	95/1033034/462	95/2234/462	EXTRA LARGE	- BLACK / RED	
	95/1033034/454	95/2234/454	EXTRA LARGE	- BROWN / YELLOW	

MATERIALS: STERLING SILVER BUCKLE, REVERSIBLE CALF LEATHER BELT
 DIMENSIONS: SMALL - 65 CM
 MEDIUM - 80 CM
 LARGE - 95 CM
 EXTRA LARGE - 110 CM

CAN BE DELIVERED UNTIL STOCK RUNS OUT

Chopard Belt - Empty Buckle

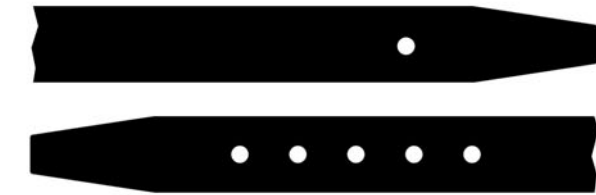


	CHOPARD BELT	LEATHER ONLY		BUCKLE ONLY	
REFERENCES:	95/1033032/165	95/2234/165	SMALL	- BLACK / BROWN	95/1033032
	95/1033032/167	95/2234/167	SMALL	- BLACK / BEIGE	
	95/1033032/162	95/2234/162	SMALL	- BLACK / RED	
	95/1033032/265	95/2234/265	MEDIUM	- BLACK / BROWN	
	95/1033032/267	95/2234/267	MEDIUM	- BLACK / BEIGE	
	95/1033032/262	95/2234/262	MEDIUM	- BLACK / RED	
	95/1033032/222	95/2234/222	MEDIUM	- RED / PINK	
	95/1033032/254	95/2234/254	MEDIUM	- BROWN / YELLOW	
	95/1033032/365	95/2234/365	LARGE	- BLACK / BROWN	
	95/1033032/367	95/2234/367	LARGE	- BLACK / BEIGE	
	95/1033032/362	95/2234/362	LARGE	- BLACK / RED	
	95/1033032/322	95/2234/322	LARGE	- RED / PINK	
	95/1033032/312	95/2234/312	LARGE	- BLUE / RED	
	95/1033032/465	95/2234/465	EXTRA LARGE	- BLACK / BROWN	
	95/1033032/467	95/2234/467	EXTRA LARGE	- BLACK / BEIGE	
	95/1033032/462	95/2234/462	EXTRA LARGE	- BLACK / RED	

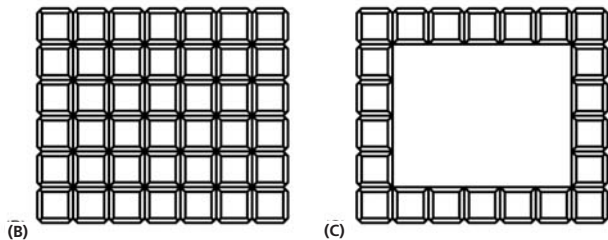
MATERIALS: STERLING SILVER BUCKLE, REVERSIBLE CALF LEATHER BELT
 DIMENSIONS: SMALL - 65 CM
 MEDIUM - 80 CM
 LARGE - 95 CM
 EXTRA LARGE - 110 CM

CAN BE DELIVERED UNTIL STOCK RUNS OUT

Silver Belt

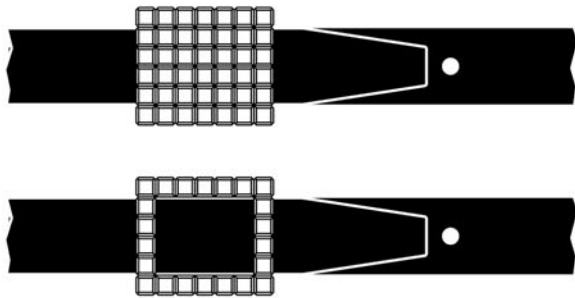


(A)

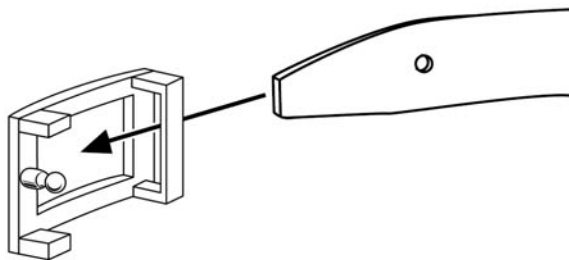


(B)

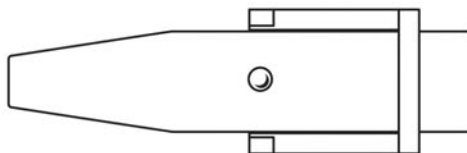
(C)



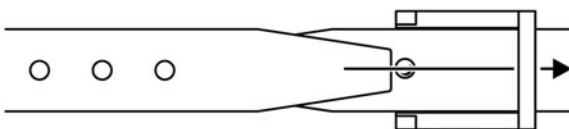
(1)



(2)



(3)



THE CHOPARD BELT

THE LATEST NEWCOMER TO THE LINE OF CHOPARD ACCESSORIES, THE REVERSIBLE TWO-TONE BELT (A) COMES IN TWO VERSIONS : SOLID BUCKLE (B) AND HOLLOW BUCKLE (C): IT IS AVAILABLE IN SIX COLOUR COMBINATIONS - BLACK/BROWN, BLACK/BEIGE, BLACK/RED, RED/PINK, BLUE/RED AND BROWN/YELLOW AND IN FOUR SIZES- S (65 CM), M (80 CM), L (95 CM) AND XL (110 CM). ENTIRELY CRAFTED IN HAND-STITCHED NATURAL LEATHER, IT FEATURES A SOLID 925 SILVER BUCKLE THAT LENDS A STUNNINGLY ELEGANT TOUCH.

FITTING THE BUCKLE

- SLIDE THE END OF THE BELT WITH JUST ONE NOTCH INTO THE BUCKLE (FIG.1)
- FASTEN THE STUD OF THE BUCKLE INSIDE THE NOTCH OF THE BELT (FIG.2)
- PLACE THE BELT AROUND THE WAIST
- SLIDE THE SECOND END WITH SEVERAL NOTCHES INSIDE THE BUCKLE AND ADJUST THE LENGTH BY FASTENING THE STUD OF THE BUCKLE INSIDE THE CHOSEN NOTCH (FIG.3)

CARING FOR YOUR BELT

A PIECE OF JEWELLERY IN ITS OWN RIGHT, THE SILVER BUCKLE IS A DELICATE OBJECT. TO ENSURE IT RE-MAINS BEAUTIFUL OVER THE LONG TERM, WE RECOMMEND THAT YOU TAKE PARTICULAR CARE OF IT. CLEAN IT REGULARLY USING A CLOTH SLIGHTLY MOISTENED WITH LUKEWARM SOAPY WATER, BUT WITHOUT RUBBING. DRY IT BY DABBING GENTLY WITH A SOFT DRY CLOTH.

LA CEINTURE CHOPARD

DERNIÈRE-NÉE DE LA LIGNE D'ACCESSOIRES CHOPARD, LA CEINTURE EN CUIR BICOLORE RÉVERSIBLE (A), DÉCLINÉE EN DEUX VERSIONS: BOUCLE PLEINE (B) ET BOUCLE ÉVIDÉE (C). ELLE EST DISPONIBLE EN SIX COMBINAISONS DE COULEURS - NOIR/BRUN, NOIR/BEIGE, NOIR/ROUGE, ROUGE/ROSE, BLEU/ROUGE ET BRUN/JAUNE, ET EN QUATRE TAILLES - S (65 CM), M (80 CM), L (95 CM) ET XL (110 CM). ENTièrement CONFECTIONNÉE EN CUIR NATUREL ET COUSUE MAIN, ELLE POSSÈDE UNE BOUCLE EN ARGENT MASSIF 925 QUI LUI CONFÈRE UNE ÉLÉGANCE RARE.

MISE EN PLACE DE LA BOUCLE

- GLISSEZ L'EXTRÉMITÉ DE LA CEINTURE COMPORTANT UN SEUL CRAN DANS LA BOUCLE (FIG.1).
- FIXEZ LE CRAN DE LA CEINTURE SUR L'ARDILLON DE LA BOUCLE (FIG. 2).
- METTEZ VOTRE CEINTURE AUTOUR DE LA TAILLE.
- GLISSEZ LA SECONDE EXTRÉMITÉ COMPORTANT PLUSIEURS CRANS À L'INTÉRIEUR DE LA BOUCLE ET AJUSTEZ LA LONGUEUR EN FIXANT LE CRAN CHOISI SUR L'ARDILLON (FIG.3).

L'ENTRETIEN

BIJOU EN ELLE-MÊME, LA BOUCLE EN ARGENT EST UN OBJET FRAGILE. AFIN QU'ELLE CONSERVE LONGTEMPS SA BEAUTÉ, NOUS VOUS RECOMMANDONS DE L'ENTREtenir AVEC PRÉCAUTION. PASSEZ RÉGULIÈREMENT, MAIS SANS FROTTER, UN CHIFFON LÉGÈREMENT HUMECTÉ D'EAU TIÈDE SAVONNEUSE. SÉCHEZ EN TAMPONNANT DOUCEMENT AVEC UN CHIFFON DOUX ET SEC.

DER CHOPARD-GÜRTEL

LETZTE NEUHEIT DER CHOPARD ACCESSOIRES LINIE IST DER BEIDSEITIG TRAGBARE GÜRTEL IN ZWEIFARBIGEM LEDER, DER IN ZWEI AUSFÜHREN ERHÄLTlich IST: MASSIVE SCHLIEßE (B) UND EINFACHE SCHLIEßE (C). ER IST IN SECHS FARBKOMBINATIONEN LIEFERBAR - SCHWARZ/BRAUN, SCHWARZ/BEIGE, SCHWARZ/ROT, ROT/ROSA, BLAU/ROT UND BRAUN/GELB, UND IN VIER GRÖßEN - S (65 CM), M (80 CM), L (95 CM) UND XL (110 CM). ER IST GANZ AUS NATURLEDER HERGESTELLT UND VON HAND GENÄHT, BESITZT EINE SCHLIEßE AUS MASSIVEM SILBER 925, DIE IHM EINE BESONDERS ELEGANTE NOTE VERLEIHT.

EINSTELLUNG DER SCHLIEßE

- SCHIEBEN SIE DAS MIT EINEM LOCH VERSEHENE ENDE DES GÜRTELS IN DIE SCHLIEßE (BILD 1).
- BEFESTIGEN SIE DEN SCHLIEßENDORN IM GÜRTELLOCH (BILD 2).
- LEGEN SIE DEN GÜRTEL UM IHRE TAILLE.
- SCHIEBEN SIE DAS ANDERE ENDE MIT MEHREREN LÖCHERN NACH INNEN IN DIE SCHLIEßE UND STELLEN SIE DIE RICHTIGE LÄNGE EIN, INDEm SIE DEN DORN IN DEM PASSENDEN LOCH BEFESTIGEN (BILD 3).

PFLEGE

DIESE SILBERNE SCHLIEßE IST EIN ECHTES SCHMUCKSTÜCK. DAMIT SIE LANGE IHR SCHÖNES AUSSEHEN BEHÄLT, EMPFEHLEN WIR IHNEN SIE BEHUTSAM ZU BEHANDeln. REINIGEN SIE SIE REGELMÄßIG MIT EINEM FEUCHTEN TUCH UND SEIFENWASSER, OHNE ZU REIBEN. WISCHEN SIE SIE DANACH MIT EINEM WEICHEN, TROCKENEN TUCH AB.

Be Happy

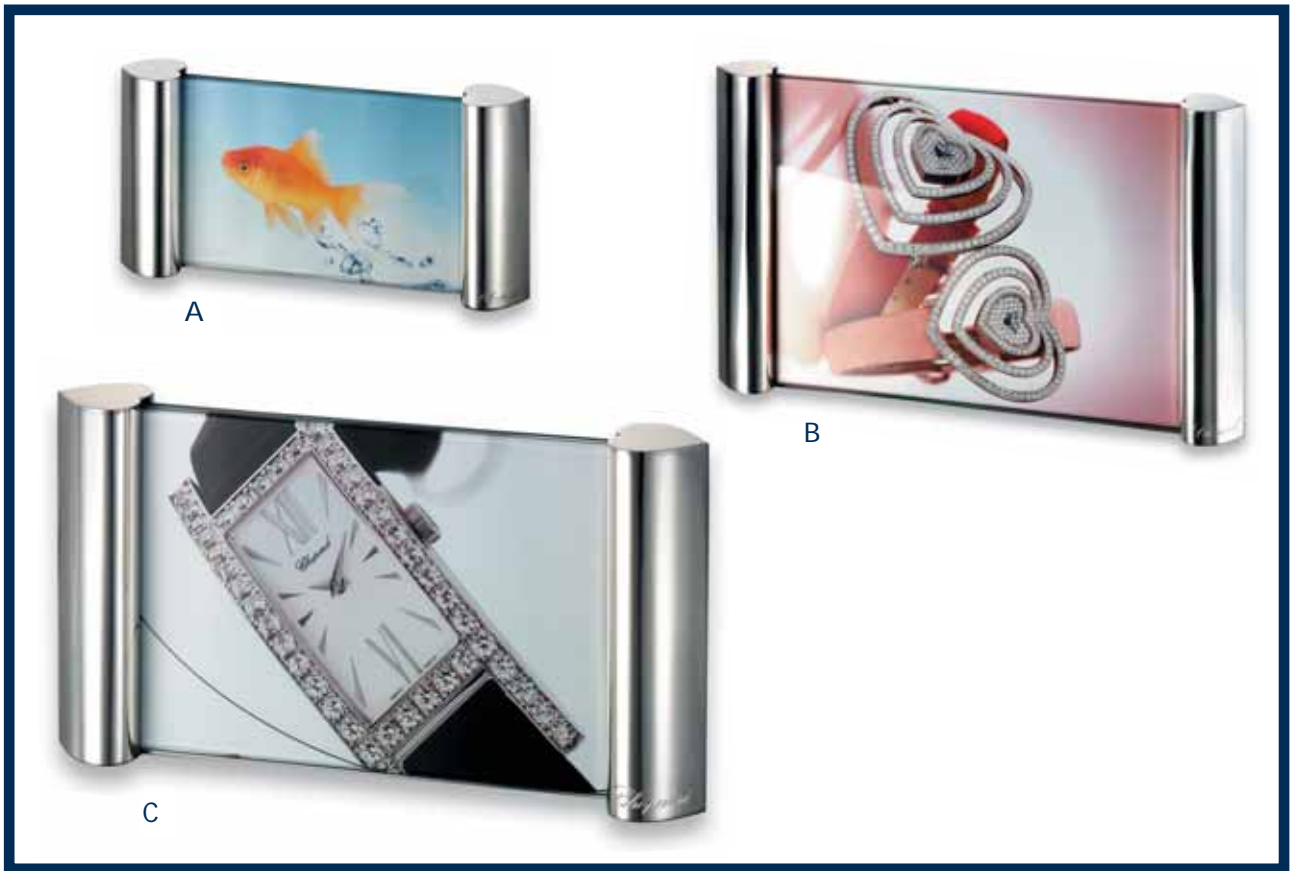


REFERENCES: 97/210-006061 BLACK
97/210-006063 BLUE
97/210-006065 RED

MATERIALS: ACETATE FRAME AND TEMPLES
CR39 FIRST QUALITY LENSES WHICH OFFER 100% UV PROTECTION
DELIVERED WITH A SPECIAL BE HAPPY BAG

CAN BE DELIVERED UNTIL STOCK RUNS OUT

Love Horizontal Picture Frame



A HORIZONTAL PICTURE SMALL

REFERENCE: 95/6020
MATERIALS: STERLING SILVER 925
DIMENSIONS: 10X15 CM
WEIGHT : 595 G

B HORIZONTAL PICTURE MEDIUM

REFERENCE: 95/6021
MATERIALS: STERLING SILVER 925
DIMENSIONS: 13X18 CM
WEIGHT : 830 G

C HORIZONTAL PICTURE LARGE

REFERENCE: 95/6022
MATERIALS: STERLING SILVER 925
DIMENSIONS: 18X24 CM
WEIGHT : 1340 G

Love Vertical Picture Frame



A VERTICAL PICTURE LARGE

REFERENCE: 95/6023
MATERIALS: STERLING SILVER 925
DIMENSIONS: 18X24 CM
WEIGHT : 1000 G

B VERTICAL PICTURE MEDIUM

REFERENCE: 95/6024
MATERIALS: STERLING SILVER 925
DIMENSIONS: 20X20 CM
WEIGHT : 930 G

C VERTICAL PICTURE SMALL

REFERENCE: 95/6025
MATERIALS: STERLING SILVER 925
DIMENSIONS: 7X7 CM
WEIGHT : 170 G

Chalet Picture Frame



REFERENCE: 95/6026

MATERIALS: STERLING SILVER 925

DIMENSIONS: 30X23 CM

WEIGHT : 875 G

Baby Gift



REFERENCES: 95/5020 BABY FRAME

95/5021 BOX "FIRST TOOTH" WITH TEDDY

MATERIALS: STERLING SILVER 925

DIMENSIONS: BABY FRAME: 13,8 CM X 15,8 CM, 249 G
"FIRST TOOTH" BOX : Ø 2,5 CM X 4 CM, 17 G

Butterflies Collection



SALT & PEPPER SHAKER

REFERENCE: 95/6014
MATERIALS: STERLING SILVER
DIMENSIONS: 62 X 49 X 51 MM
WEIGHT : 196 G

SPOON

REFERENCE: 95/6010
MATERIALS: STERLING SILVER
DIMENSIONS: 136 X 26 X 13 MM
WEIGHT : 41 G

EGGBELL

REFERENCE: 95/6000
MATERIALS: STERLING SILVER
DIMENSIONS: Ø 101 X 130 MM
WEIGHT : 233 G

RECTANGULAR PIN-TRAY

REFERENCE: 95/6001
MATERIALS: STERLING SILVER
DIMENSIONS: 170 X 142 X 18 MM
WEIGHT : 343 G

CUP

REFERENCE: 95/6007
MATERIALS: STERLING SILVER
DIMENSIONS: Ø 65 X 70 MM
WEIGHT : 84 G

CAN BE DELIVERED UNTIL STOCK RUNS OUT

Butterflies Collection



CHEESE KNIFE

REFERENCE: 95/6011
MATERIALS: STERLING SILVER
DIMENSIONS: 150 X 34 MM
WEIGHT : 87 G

LETTER OPENER

REFERENCE: 95/6009
MATERIALS: STERLING SILVER
DIMENSIONS: 200 X 53 X 5,5 MM
WEIGHT : 116 G

BOTTLE-OPENER

REFERENCE: 95/6013
MATERIALS: STERLING SILVER
DIMENSIONS: 137 X 45 X 20 MM
WEIGHT : 85 G

RULER

REFERENCE: 95/6008
MATERIALS: STERLING SILVER
DIMENSIONS: 200 X 53 X 5 MM
WEIGHT : 117 G

MONEY HOLDER

REFERENCE: 95/6003
MATERIALS: STERLING SILVER
DIMENSIONS: Ø 45 X 1,5 MM
WEIGHT : 11 G

CAN BE DELIVERED UNTIL STOCK RUNS OUT

Hearts Picture Frames



HEART LARGE

REFERENCE: 95/5520-23
MATERIALS: STERLING SILVER 925
DIMENSIONS: 140 X 125 X 12 MM
WEIGHT : 224 G

HEART MEDIUM

REFERENCE: 95/5519-23
MATERIALS: STERLING SILVER 925
DIMENSIONS: 110 X 80 X 12 MM
WEIGHT : 123 G

HEART SMALL

REFERENCE: 95/5518-23
MATERIALS: STERLING SILVER 925
DIMENSIONS: 60 X 50 X 12 MM
WEIGHT : 92 G

Silverware



HEART KEY RING WITH SAPPHIRE CABOCHON

REFERENCE: 95/5514-23
MATERIALS: STERLING SILVER
DIMENSIONS: 21 X 19 X 3 MM
WEIGHT : 18 G

HEART PILLBOX

REFERENCE: 95/5516
MATERIALS: STERLING SILVER
DIMENSIONS: 45 X 45 X 25 MM
WEIGHT : 32 G

HEART KEY RING

REFERENCE: 95/5513
MATERIALS: STERLING SILVER
DIMENSIONS: 21 X 19 X 3 MM
WEIGHT : 18 G

HEART PILLBOX WITH SAPPHIRE CABOCHON

REFERENCE: 95/5516-23
MATERIALS: STERLING SILVER
DIMENSIONS: 45 X 45 X 25 MM
WEIGHT : 32 G

DICE PILLBOX

REFERENCE: 95/5515
MATERIALS: STERLING SILVER
DIMENSIONS: 20 X 20 X 20 MM
WEIGHT : 22 G

HEART PIN TRAY

REFERENCE: 95/5022
MATERIALS: STERLING SILVER
DIMENSIONS: 70 X 72 X 11 MM
WEIGHT : 46 G

CAN BE DELIVERED UNTIL STOCK RUNS OUT

Happy Snow Coffee & Tea Set



COFFEE SET (2 CUPS, 2 SAUCERS)

REFERENCE: A 95/1580

MATERIALS: PORCELAINE DE LIMOGES, MADE IN FRANCE

DIMENSIONS: CUP Ø 6.0 CM, HEIGHT 5.8 CM
SAUCER Ø 12.2 CM, HEIGHT 1.8 CM

WEIGHT: CUP 62 G, SAUCER 100 G

TEA SET (2 CUPS, 2 SAUCERS)

REFERENCE: B 95/1581

MATERIALS: PORCELAINE DE LIMOGES, MADE IN FRANCE

DIMENSIONS: CUP Ø 8.2 CM, HEIGHT 5.5 CM
SAUCER Ø 15.0 CM, HEIGHT 1.8 CM

WEIGHT: CUP 108 G, SAUCER 142 G

Happy Snow Pin Trays



PIN TRAY HAPPY SNOW SMALL

REFERENCE: 95/1582

MATERIALS: PORCELAINE DE LIMOGES, MADE IN FRANCE

DIMENSIONS: 10X10 CM

WEIGHT: 115 G

PIN TRAY HAPPY SNOW MEDIUM

REFERENCE: 95/1583

MATERIALS: PORCELAINE DE LIMOGES, MADE IN FRANCE

DIMENSIONS: 18.5X18.5 CM

WEIGHT: 510 G

PIN TRAY HAPPY SNOW LARGE

REFERENCE: 95/1584

MATERIALS: PORCELAINE DE LIMOGES, MADE IN FRANCE

DIMENSIONS: 30X30 CM

WEIGHT: 1850 G

Butterflies Tea Set



TEA SETS

REFERENCES: 95/1577 TEA SET BUTTERFLIES YELLOW GOLD COLOUR (2 CUPS, 2 SAUCERS)
95/1575 TEA SET BUTTERFLIES PLATINUM COLOUR (2 CUPS, 2 SAUCERS)

MATERIALS: PORCELAINE DE LIMOGES

DIMENSIONS: CUP Ø 8,2CM, HEIGHT 5,5CM
SAUCER Ø 14,9CM, HEIGHT 2,4CM

WEIGHT: CUP 119 G, SAUCER 146 G

Butterflies Coffee Set



COFFEE SETS

REFERENCES: 95/1576 COFFEE SET BUTTERFLIES YELLOW GOLD COLOUR (2 CUPS, 2 SAUCERS)

95/1574 COFFEE SET BUTTERFLIES PLATINUM COLOUR (2 CUPS, 2 SAUCERS)

MATERIALS: PORCELAINE DE LIMOGES

DIMENSIONS: CUP Ø 6,0CM, HEIGHT 5,8CM
SAUCER Ø 12,1CM, HEIGHT 2,2CM

WEIGHT: CUP 87 G, SAUCER 104 G

Baby Set



BABY SET

REFERENCES: 95/1579 BABY SET BLUE

95/1578 BABY SET PINK

MATERIALS: PORCELAINE DE LIMOGES

DIMENSIONS: CUP Ø 7,7CM, HEIGHT 7,7CM
PLATE Ø 16,8CM, HEIGHT 3,0CM

WEIGHT: CUP 188 G, PLATE 289 G

Pin Trays



PIN TRAYS

REFERENCES: 95/1572 ASHTRAY ANTIQUE BLUE PLATINIUM
95/1573 ASHTRAY ANTIQUE CLARET PLATINIUM

MATERIALS: PORCELAINE DE LIMOGES

DIMENSIONS: 20 X 16 CM

WEIGHT: 600G

LIMITED EDITION NUMBERED 500 PIECES ONLY