



The Eaton Bag



Perfect for the office, shopping or about town, our Eaton Bag is a classic yet sophisticated structured bag large enough to hold all you need. Handmade in black deep-shine Italian patent calf leather and lined with shimmering signature red grosgrain, the Eaton Bag has a classic timeless appeal that will remain in vogue forever.

Purchase the Eaton Bag and Ladies Classic Gloves with Swarovski Button:

THE EATON BAG

ITEM CODE: 042-1051

12" (H) X 14.75" (W) X 5.75" (D)

7

THE EATON BAG AND LADIES CLASSIC GLOVES

WITH SWAROVSKI BUTTONS SET*

ITEM CODE: 040-1077

WE ARE UNABLE TO PERSONALISE THIS ITEM

*CANNOT BE USED IN CONJUNCTION WITH ANY OTHER OFFER

Ladies Eaton Gloves With Swarovski Buttons

Hand-stitched using only the finest soft buttery black nappa leather and lined in 100% silk, these elegant gloves feature three truly dazzling diamond cut crystals made with SWAROVSKI ELEMENTS[®] presentation sleeve.

LADIES EATON GLOVES WITH SWAROVSKI BUTTONS

ITEM CODE: 046-1076

WE ARE UNABLE TO PERSONALISE THIS ITEM

SIZE 6.5

SIZE 7

SIZE 7.5

SIZE 8



Hepburn Bag



Handmade in head turning, tactile and exotic Leopard or Zebra print hide or striking deep-shine Italian patent calf leather, the Hepburn Bag perfectly mirrors the trends this season, whilst its alluring shape exudes elegance and timeless style. Spacious enough to hold all of your daily essentials and beautifully lined in shimmering grosgrain, it is an eternal classic.

HEPBURN BAG

ITEM CODE: 042-0543 LEOPARD / ZEBRA

ITEM CODE: 042-0987 PATENT

10.5" (H) X 12.5" (W) X 7" (D) / HANDLE DROP - 4.5"

WE ARE UNABLE TO PERSONALISE THIS ITEM



LEOPARD
0792



ZEBRA
0793



BLACK PATENT
0421



PURPLE PATENT
0421



RED PATENT
0422

Safari Clutch Zip Wallet

Sensual and compact, the tactile Safari Clutch Zip Wallet is handmade from exotic Leopard or Zebra print hide with a stud detailed black patent leather border on one side and full, rich black patent leather on the reverse. The perfect, elegant accessory.

SAFARI CLUTCH ZIP WALLET
ITEM CODE: 039-0707

7.5" (H) X 4.25" (W) X 0.75" (D)



WE ARE UNABLE TO
PERSONALISE THIS ITEM



ZEBRA
0793



LEOPARD
0792

The Libertine Clutch



CORAL T
8045

THE LIBERTINE CLUTCH
ITEM CODE: 042-1049

6.75" H X 9" W X 1.5" D

WE ARE UNABLE TO PERSONALISE THIS ITEM

The Libertine Clutch is the epitome of regal elegance and vintage feminine charm. Handcrafted with meticulous attention to detail from the finest soft suede leather and finished with a detachable long tassel fringe and elegant chain giving The Libertine Clutch an opulent on-trend finish.



PURPLE SUIDE
0941

GOLD SUIDE
0942

RED SUIDE
0085

FUCHSIA SUIDE
0053

BLACK SUIDE
0832

Athena Cuff Bracelet

The must-have jewellery accessory for the season ahead!



ORANGE SNAKE
0687

GOLD SNAKE
0684

PINK SNAKE
0688

LILAC SNAKE
0686

RED SNAKE
0689

BLUE SNAKE
0683

TAN SNAKE
0676

BLACK SNAKE
0682

ATHENA CUFF BRACELET
ITEM CODE: 048-0641

SIZE 1 - SMALL
SIZE 2 - MEDIUM

WE ARE UNABLE TO
PERSONALISE THIS ITEM

Eaton Clutch



Handmade from vegetable tanned mock croc and mock snake which has been exclusively hand dyed and finished for us by a one hundred year old family tannery, our fabulous Eaton Clutch is special enough to consider wearing as you would any favourite piece of jewellery. It will hold all of your essentials and has a neat zipped inside pocket, all exquisitely lined in shimmering contrast grosgrain. The Eaton Clutch comes with a stunning fine quality gold removable lightweight chain and elegant clasp and has a classic timeless appeal. This is an heirloom piece that can be handed down through generations.

EATON CLUTCH
ITEM CODE: 042-0021

£275.00

4.74"(H) X 10"(W) X 1.5"(D) / REMOVABLE CHAIN 17"(L)

WE ARE UNABLE TO PERSONALISE THIS ITEM



RED & BLACK CROC
WITH GOLD SNAKE
0486



BLACK PATENT CROC
0482



GOLD SNAKE
0485



Lipstick Case

These cute lipstick cases are handmade in quality croc calf or metallic gold leather and lined in shimmering grosgrain. Designed to hold one lipstick, each case closes securely with a popper fastening.

LIPSTICK CASE
ITEM CODE: 015-0118

£35.00

1.25"(H) X 4"(W) X 1.5"(D)

WE ARE UNABLE TO PERSONALISE THIS ITEM



HOT PINK CROC
0488



PURPLE CROC
0487



NAVY CROC
0429



RED PATENT CROC
0128



METALLIC GOLD
0489



The Berkeley Bag



The epitome of understated elegance and pure luxury, we introduce the Berkeley Bag. Handmade in a soft and supple country influenced pebble calf leather or sophisticated mock croc, the Berkeley Bag is guaranteed to become an instant Aspinal classic. Versatile and spacious, the semi-structured interior is beautifully lined in Aspinal signature grosgrain accented by smooth calf leather. The Berkeley Bag is the ultimate in discerning feminine arm candy, perfect for all ages.

Available in an Aspinal protective felt insert.



THE BERKELEY BAG

ITEM CODE: 042-0901

£495.00

12" (H) X 15" (W) X 6.5" (D) / HANDLE DROP: 7.5"

WE ARE UNABLE TO PERSONALISE THIS ITEM



CREAM
0776



BROWN
0778



TAN
0761



BLACK
0776



PURPLE SOFT CROC
0768



AMAZON BROWN SOFT
CROC 0776



BLACK SOFT CROC
0777

Berkeley Coin Purse Wallet

The classically styled Berkeley Coin Purse Wallet is handmade from beautifully soft and supple mock croc or smooth calf leather to the outside and smooth calf leather to the interior. This gorgeous leather coin purse wallet will meet all your practical needs and provide years of faithful service.

BERKELEY COIN PURSE WALLET

ITEM CODE: 039-0913

£110.00

4.25"(H) X 5.25"(W) X 1"(D)

WE ARE UNABLE TO PERSONALISE THIS ITEM



PURPLE CROC
0762



AMAZON BROWN CROC
0767



BLACK CROC
0769



SMOOTH CHOCOLATE
0802



SMOOTH TAN
0808



SMOOTH BLACK
0768

Portobello Saddle Bag



Traditional style meets boho-chic as we introduce the equestrian-styled Portobello Saddle Bag. The classic clean lines, rounded horseshoe silhouette and the fully adjustable cross-body strap with cute tassel detail lend effortless charm. Handmade in soft supple calf leather or mock croc, the inside opens to reveal an external zipped pocket and one main compartment large enough for all your daily essentials.

PORTOBELLO SADDLE BAG
ITEM CODE: 042-0921

8.5"0"X 11.25"0"W X 2.5"0"D / SHOULDER STRAP: 25" (MAX)

WE ARE UNABLE TO PERSONALISE THIS ITEM



SMOOTH TAN
& STONE 16826 0797



SMOOTH CHOCOLATE
& STONE 16826 0796



SMOOTH BLACK
& BLACK 16826 0791



AMAZON BROWN CROC
& STONE 16826 0794



BLACK SOFT CROC
& BLACK 16826 0795

Portobello Zip-around Purse

This gorgeous zip-around purse features discreet gold tone stud detailing to the front and a cute tassel detail zip pull. Inside is complimented by smooth calf leather.

[View more information on the Portobello Zip-around Purse](#)

PORTOBELLO ZIP-AROUND PURSE
ITEM CODE: 039-0912

01.00.00

3.75" (H) X 5.25" (W) X 1.75" (D)

WE ARE UNABLE TO PERSONALISE THIS ITEM



SMOOTH TAN
& STONE 16826 0797



SMOOTH CHOCOLATE
& STONE 16826 0796



SMOOTH BLACK
& BLACK 16826 0791



AMAZON BROWN SOFT CROC
& STONE 16826 0794



BLACK SOFT CROC
& BLACK 16826 0795

Barbarella Purse Wallet



Handmade in deep-shine Italian patent leather and lined in soft suede. Inside there is a central zipped coin compartment with full length pockets either side, four credit card slots and a full length compartment at the back. This purse is absolutely gorgeous

BARBARELLA PURSE WALLET

ITEM CODE: 039-0285

4"00(X)X7.5"(W)X1.25"(D)

WE ARE UNABLE TO PERSONALISE THIS ITEM



PURPLE
PATENT
0441



RED
PATENT
0442



WHITE
PATENT
0429



BLACK
PATENT
0474



NAVY BLUE
PATENT
0440

Sofia Clutch Zip Wallet

The Sofia Clutch Zip Wallet has been handmade in beautiful deep-shine Italian patent leather and is lined in contrasting soft suede. It is totally practical and a treat to own and use, so if you are looking for a clutch purse to practically contain 'your life'... Here it is!



SOFIA CLUTCH ZIP WALLET

ITEM CODE: 039-0069

4.25"00(X)X7.75"(W)

WE ARE UNABLE TO PERSONALISE THIS ITEM



PURPLE PATENT
0441



RED PATENT
0442



BLACK PATENT
0429



NAVY BLUE PATENT
0440

Hepburn Coin Purse



This gorgeously feminine Hepburn Coin Purse is handmade in deep-shine Italian patent croc or soft pebble calf leather with Aspinal signature "lettered" branding to the front. The main snap closure compartment opens to reveal a large zipped coin compartment and a multitude of pockets to store everything from credit cards, notes and travel IDs.

HEPBURN COIN PURSE
ITEM CODE: 039-0939

2.75"(H) X 6"(W) X 1.2"

WE ARE UNABLE TO
PERSONALISE THIS ITEM



RED PATENT
CROC
0501



NAVY PATENT
CROC
0499



BLACK PATENT
CROC
0495



CHOCOLATE PEBBLE
0538



TAN PEBBLE
0804



BLACK PEBBLE
0529

London Ladies' Classic Wallet



Our gorgeous classic wallet will meet all your needs and provide years of faithful service. Twelve credit card slots, ID or photo window, two large note compartments and zipped, centre coin compartment. Stunning!

LONDON LADIES' CLASSIC WALLET
ITEM CODE: 039-0113

4.5"(H) X 7.5"(W)

THIS ITEM CAN BE PERSONALISED WITH UP TO 4 INITIALS



PURPLE CROC &
CREAM SUED
0028



ASCOT PINK
JEWEL CALF &
CREAM SUED
0010



SMOOTH BLACK
& NAVY PEW
SUED
0020



BLACK JEWEL
CALF & RED
SUED
0028



VINTAGE TAN
CROC & SUED
SUED
0101

Handbag Charms & Keyrings

Add a touch of Aspinal panache to your favourite handbag with our new collection of dazzling Handbag Charms & Keyrings.

WE ARE UNABLE TO PERSONALISE THIS ITEM

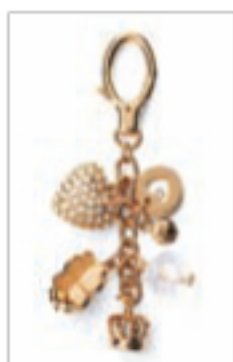
QUEEN OF HEARTS
ITEM CODE: 024-0656



BLACK
0878



RED
0883



CLEAR
0879



ASPINAL DOG
ITEM CODE: 024-0653



LUCKY CLOVER
ITEM CODE: 024-0652

MULTI
0880

MINI HEBURN
ITEM CODE: 024-0654



RED
0881



CLEAR
0879



BLACK
0878

VIEW THE FULL COLLECTION OF
CHARMS AND KEYRINGS ONLINE



Bezel Keyrings

Taking inspiration from the phenomenal success of our range of Handbag Hooks we have now created a stunning collection of alluring Bezel Keyrings.



BEZEL KEYRINGS
ITEM CODE: 024-0991

DIAMETER: 1.25" / WEIGHT: 49g

WE ARE UNABLE TO PERSONALISE THIS ITEM

GOLD SQUARE &
STONE
0998

FUCHSIA PATENT &
ROSE STONE
0970

RED PATENT &
RED STONE
0622

GOLD SQUARE &
MULTI COLOURED
STONE
0621

NAVY PATENT &
AQUAMARINE
STONE
0628

Handbag Hook

It's always a problem, where to hang your favourite handbag when eating out. You could hang it on the back of your chair, on the floor under your feet or on your lap. Whatever you do, it's never particularly safe. Well, grab yourself one of these gorgeous Handbag Hooks - simply place on the edge of the table and hang your bag on the hook. It will conveniently hold it within easy reach.

HANDBAG HOOK
ITEM CODE: 001-0072

4" DROP FROM TABLE TOP

WE ARE UNABLE TO PERSONALISE THIS ITEM



GOLD SQUARE &
CRYSTAL STONE
0555

NAVY PATENT &
AQUAMARINE STONE
0628

CANDY PINK PATENT &
ROSE STONE
0670

RED PATENT & RED
STONE
0622

GOLD SQUARE & MULTI
COLOURED STONE
0621



AMAZON
BROWN CROC
0001

ASCOT PINK
JEWEL CALF
0009

SMOOTH
BLACK
0018

RED PATENT
CROC
0126

PURPLE CROC
0307

GOLD SQUARE &
STONE
0555



Leather Cuff Bracelet Collection



ATHENA CUFF BRACELET



VIEW THE FULL COLLECTION
ASPINAL LEATHER CUFF
BRACELETS ONLINE



EMPRESS CUFF BRACELET

ROMA CUFF BRACELET

Leather Cuff Bracelets



ROMA CUFF PURPLE, GOLD AND
BLACK SNAKE
0818



ROMA CUFF BLACK, GOLD AND RED
SNAKE
0812



ROMA CUFF BROWN, GOLD AND BLACK
SNAKE
0873



ROMA CUFF LAC, GOLD AND
PINK SNAKE
0871



ROMA CUFF GOLD AND MULTI CROC
0875



EMPRESS CUFF COBALT BLUE
0904
9979



EMPRESS CUFF ORANGE CROC
0876



EMPRESS CUFF RED PATENT CROC
0878



EMPRESS CUFF BLACK CROC
8974



EMPRESS CUFF AMAZON CROC
0873



EMPRESS CUFF PURPLE CROC
0877



PLEASE SEE PAGE 7 FOR DETAILS OF
THE ATHENA CUFF BRACELET



ROMA CUFF BROWN LEOPARD AND
BLACK
0877



ROMA CUFF ZEBRA AND BLUE SNAKE
0876

Over sized statement jewellery is a key look this season. Make a dramatic style statement with our stunning range of Cuff Bracelets. The must-have jewellery accessory for the season ahead! Available in small and medium.

ROMA CUFF BRACELETS
ITEM CODE: 048-8642

EMPRESS CUFF BRACELETS
ITEM CODE: 048-8640

[VIEW FULL COLLECTION OF JEWELLERY ONLINE](#)

Travel Jewellery Box

This exquisitely delicate and versatile travel jewellery box will make a chic addition to your travel regime and at the same time look just as impressive on your dressing table. Handmade in a choice of stunning signature leathers and lined in contrasting soft-suede with eight separate compartments in matching calf leather.

TRAVEL JEWELLERY BOX

ITEM CODE: 021-0772

1.5"(H) X 4.5"(W) X 4.5"(D)

WE ARE UNABLE TO PERSONALISE THIS ITEM



METALLIC GOLD &
CREAM
0638



PURPLE CROC &
CREAM SUDEE
0398



AMAZON BROWN
CROC & STONE SUDEE
0962



RED PATENT CROC
& CREAM SUDEE
0637



ASCOT PINK JEWEL CALF
& CREAM SUDEE
0818



SMOOTH BLACK &
CREAM SUDEE
0368



Grand Luxe Jewellery Case

This stunning two layer jewellery box is beautifully handmade in premium leather and contrasting soft suede. It features two layers, consisting of a 10 inch ring roll, a square compartment and two smaller compartments with padded lids. The lower layer has three compartments for larger pieces and the case closes with solid brass lock. All of the hinges and fittings are solid brass.

GRAND LUXE JEWELLERY CASE

ITEM CODE: 021-01070

4.5" (H) X 12" (W) X 9.5" (D)

THIS ITEM CAN BE PERSONALISED WITH UP TO 4 INITIALS



PURPLE CROC &
CREAM SUDEE
0398



AMAZON BROWN
CROC & STONE SUDEE
0962



BLACK CROC &
RED SUDEE
0017



ASCOT PINK
JEWEL CALF & CREAM
SUDEE
0818



RED JEWEL
CALF & RED
SUDEE
0081

Travel Jewellery Roll

Our gorgeous travel jewellery rolls each have 4 zipped compartments and one ring and earring strap. Handmade in beautiful leathers and lined in contrast soft suede, this is definitely an item you do not want to holiday without!

TRAVEL JEWELLERY ROLL
ITEM CODE: 021-0361

3" H X 5.5" W X 11.5" D

WE ARE UNABLE TO PERSONALISE THIS ITEM



HERITAGE TAN CROC
& BERGE SUEDE
0361



RED PATENT CROC
& CREAM SUEDE
0305



PURPLE CROC
& CREAM SUEDE
0306



ASCOT PINK JEWEL CALF
& CREAM SUEDE
0618



SMOOTH BLACK &
PINK SUEDE
0620



Savoy Jewellery Case

This stunning two layer jewellery box is wonderfully handmade in beautiful leathers and contrasting soft suede. It features two layers, consisting of a 10 inch ring roll, a square compartment and two smaller compartments with padded lids. The lower layer has three compartments for larger pieces. The case closes with solid brass lock. All of the hinges and fittings are solid brass.

SAVOY JEWELLERY CASE
ITEM CODE: 021-0174

3.5" H X 11" W X 7.5" D

THIS ITEM CAN BE PERSONALISED WITH UP TO 4 INITIALS



PURPLE CROC &
CREAM SUEDE
0308



AMAZON BROWN
CROC & STONE
SUEDE
0603



NAVY CROC AND
CREAM SUEDE
0426



AGUA JEWEL
CALF & LIME
SUEDE
0302



ASCOT PINK
JEWEL CALF &
CREAM SUEDE
0610

Cosmetic Pouch



Our Flat Cosmetic Pouches are handmade from stunning Italian calf leather and lined with our luxurious, water resistant silk mix monogrammed lining. Perfect for those minor make up essentials plus they fit discreetly into your handbag

LARGE FLAT COSMETIC POUCH

ITEM CODE: 015-075

5.25"(H) X 6.75"(W) X 0.25"(D)

MINI COSMETIC POUCH

ITEM CODE: 015-0755

3.75"(H) X 5.25"(W) X 0.25"(D)

WE ARE UNABLE TO
PERSONALISE THIS ITEM



METALLIC GOLD SNAKE
0625

PURPLE PATENT
0421

RED PATENT CROC
0501

LONDON RED PATENT
0705

FUCHSIA PATENT
0704



Lipstick & Handbag Tidy All

This unique design will organise your handbag. Small enough to take anywhere but large enough to hold all of your essentials, plus it has a smart little mirror. We think this is possibly one of the most useful additions to any handbag.

LIPSTICK & HANDBAG TIDY ALL

ITEM CODE: 015-0369

2"(H) X 5"(W) X 2.5"(D)

WE ARE UNABLE TO PERSONALISE THIS ITEM



PURPLE CROC
& CREAM SUEDE
8380

ASCOT PINK
& CREAM SUEDE
0910

SMOOTH BLACK
& PINK SUEDE
0920

RED PATENT CROC
& CREAM SUEDE
0308

VINTAGE TAN CROC
& ESPRESSO SUEDE
8120

The Aspinal Toiletry and Cosmetic Cases



This classic Aspinal collection of toiletry and cosmetic cases are individually handmade in beautiful premium jewel or croc calf leather. Each case is lined in beautifully contrasting soft suede and closes with a quality Swiss made silver or gold zip. Both the Cosmetic Case and Toiletry Case feature a removable washable plastic lining with pockets so the bags can be used with or without and they also contain a handy mirror framed in leather tucked inside.

TOILETRY CASE
ITEM CODE: 015-0411

COSMETIC CASE
ITEM CODE: 015-0411

6.5" (H) X 10.75" (W) X 4.25" (D)

5.5" (H) X 8" (W) X 3.25" (D)

WE ARE UNABLE TO PERSONALISE THESE ITEMS



PURPLE CROC
& CREAM SUED
0208



AQUA JEWEL CALF
& LIME SUED
0202



ASCOT PINK JEWEL CALF
& CREAM SUED
0210



RED JEWEL CALF
& BEIGE SUED
0201



VINTAGE TAN CROC
& BEIGE SUED
0203



BLACK JEWEL CALF
& RED SUED
0205



Small Cosmetic & Brush Case

As the smallest member of our classic collection, the Cosmetic and Brush case will fit neatly into a handbag, is a treat to own and use and will give years of loyal service.

SMALL COSMETIC & BRUSH CASE
ITEM CODE: 015-0411

3.5" (H) X 8" (W) X 2.5" (D)

WE ARE UNABLE TO PERSONALISE THIS ITEM



PURPLE CROC
& CREAM
SUED
0208



AQUA
JEWEL CALF
& LIME SUED
0202



ASCOT PINK
JEWEL CALF &
CREAM SUED
0210



RED JEWEL CALF
& BEIGE SUED
0201



VINTAGE TAN
CROC & BEIGE
SUED
0203



BLACK JEWEL CALF
& RED SUED
0205

Ladies Scarves

Choose

from an exquisite selection of feminine styles and hues to suit the most discerning of ladies. All our scarves are made in Scotland with the finest 100% cashmere and extra fine Merino wool and made to a superior thickness and quality for a durable, comfortable statement of style and elegance.

TARTAN
100% EXTRA FINE MERINO WOOL
ITEM CODE: 051-1009



BEIGE AND GREY
0906



PURPLE AND WHITE
0908



LIGHT BLUE
0907



VIEW THE FULL COLLECTION
OF LADIES SCARVES ONLINE

WIDE STRIPE
SILK, WOOL AND LINEN MIX
ITEM CODE: 051-1010



PINK AND PURPLE
0913



GREY AND BLACK
0909



PURPLE AND BLACK
0911

ALL SCARVES ARRIVE GIFT WRAPPED IN
ASPINAL EXQUISITE SIGNATURE PRESENTATION

PLAIN
100% CASHMERE
ITEM CODE: 051-0472



Ladies Contrast Button Gloves

Ladies Button Gloves are made using only the finest soft nappa leather in two tone. These mid length classic leather gloves are elegantly accented with leather buttons for daily use or any smart occasion.

LADIES CONTRAST BUTTON GLOVES
ITEM CODE: 046-0270

0035 SIZE 6.5
0036 SIZE 7
0037 SIZE 7.5
0038 SIZE 8



BLACK
& PINK
0150



BLACK
& WHITE
0152



BLACK
& RED
0151



BLACK
& PURPLE
0062



BLACK
& FUCHSIA
0064



BROWN
& CREAM
0165



Cashmere Ladies Gloves

Without compromise, these beautiful gloves have been made using only the finest soft nappa leather and 100% cashmere lining. Simple, chic and utterly understated, you will be very snugly this winter.

CASHMERE LADIES GLOVES
ITEM CODE: 046-0268



FUCHSIA
0066

NAVY
0068



PURPLE
0190



BLACK
0047



BROWN
0167



RED
0205

0035 SIZE 6.5
0036 SIZE 7
0037 SIZE 7.5
0038 SIZE 8

Silk Lined Smartie Gloves

Ladies Smartie Gloves are individually hand stitched in our workshops by our master leather craftsmen. Lined in 100% silk for extra comfort, only the finest soft buttery nappa leather is used to make these elegantly unique ladies Smartie Gloves with a striking myriad of contrast colours accented with matching coloured buttons.

NEW SMARTIE GLOVES
ITEM CODE: 046-0733

0035 SIZE 6.5
0036 SIZE 7
0037 SIZE 7.5
0038 SIZE 8



Heart Coin Purse

Heart Coin Purse has been handmade in smooth and shiny patent leather and lined in soft suede. The Swiss made zip opens 3/4 of the purse allowing you quick and easy access to your coins. Gorgeous, elegant and practical, this cute coin purse will hold all the coins you need! Also available in Candy Pink, Gold Snake, Purple, Red, Black and Navy.

HEART COIN PURSE
ITEM CODE: 839-0073

3.5" H X 3.5" W



iPhone & Blackberry Cases

Safeguard your iPhone or Blackberry from everyday scratches and bumps with our distinctive slim-fit leather pouch. Hand crafted from the finest mock croc or smooth calf leather and lined in signature soft suede, they offer excellent protection and durability. Available three sizes

LARGE BLACKBERRY CASE
ITEM CODE: 062-0995

4.1" H X 3.5" W

SMALL BLACKBERRY CASE
ITEM CODE: 062-0995

4.5" H X 3.25" W

IPHONE CASE (SUITABLE FOR 3G AND 3GS)
ITEM CODE: 062-0996

4.8" H X 3.1" W



THESE ITEMS CAN BE
PERSONALISED WITH
UP TO 4 INITIALS

Ladies Business & Laptop Bag



Call it divine, call it practical, call it fabulous and you will not be exaggerating the impressive style, elegance and beauty of this ladies business and laptop case. Handmade in smooth french calf leather or mock croc calf with a traditional firm construction to give the case strength, the fittings are solid brass or nickel and the case closes with an Aspinal signature lock. Inside are three quilted padded compartments with a central compartment with a removable extra thick padded base for your laptop. Either side there is ample room for papers and storage pockets for your mobile, calculator or PDA. Mid length handles allow the case to be carried over the shoulder or at arms length.

LADIES BUSINESS AND LAPTOP BAG
ITEM CODE: 011-0395

15"HD X 16"WD X 4"DD

WE ARE UNABLE TO PERSONALISE THIS ITEM



SMOOTH BLACK
& BABY
PINK VEGE
0020



PURPLE CROC
& CREAM
VEGE
0080



NAVY BLUE CROC
& CREAM VEGE
0426



VINTAGE TAN
CROC & CREAM
VEGE
0150

Ladies Silk Scarves

WATERCOLOUR PEONY PRINT
ITEM CODE: 051-0978

35.5" (91 X 35.5" (94)



BLACK
0310



FUSCHIA
0838



MARINE BLUE
0851

BUTTERFLIES
ITEM CODE: 051-0735

35.5" (91 X 35.5" (94)



ORANGE
8350



NAVY
0520



PINK
0543

CHAIN & PEARLS
ITEM CODE: 051-0379

35.5" (91 X 35.5" (94)



RED & BLACK
8329



BLACK & FUSCHIA
8379



BLUE & TURQUOISE
8321



VIEW THE FULL COLLECTION OF
LADIES SILK SCARVES ONLINE

Stocking Fillers



Tape Measure

ITEM CODE: 001-0359

2"00 X 2"00

WE ARE UNABLE
TO PERSONALISE
THIS ITEM



The Aspinall Ladies' Social Diary & London Directory



ITEM CODE: 086-0390

T 25"00 X 4 5"00 X D 1 5"00

Travel Photo Frame with Case

ITEM CODE: 017-0199

PHOTO 3" X 2 5"



THIS ITEM CAN BE PERSONALISED WITH UP TO 4 INITIALS



Pocket Memo Pad

ITEM CODE: 061-0436

5 25"00 X 4 25"00

THIS ITEM CAN BE
PERSONALISED WITH
UP TO 4 INITIALS

Compact Travel Mirror



ITEM CODE: 015-0219

3 5"00 X 3 5"00

WE ARE UNABLE TO
PERSONALISE THIS ITEM

Heart Mirror Key Ring



HEART MIRROR KEY RING
ITEM CODE: 024-0669

3"00 X 3"00

PORTOFINO ROLLING
CABIN BAG
ITEM CODE: 025-0750
£775.00

SEE PAGE 63 FOR
CANDY CASE DETAILS

Travel Collection

Buffalo Cabin Bag



Buffalo Cabin Bag is a carry-on bag handmade from soft and supple calf skin leather with contrasting hide and lined in vibrant red grosgrain. Features include: solid brass Swiss made zip closures with a full leather base and integral wheels. The sturdy leather carry handles are a height of 10" / 25.4cm allowing the bag to be carried by hand and the telescopic hidden framed handle has been created with three settings for your optimum comfort. Be sure to turn heads as you glide through arrivals the next time you travel. A statement of style for both men and women.

BUFFALO CABIN BAG
ITEM CODE: 825-8027

13.5" H X 18.1" W X 9.8" D
TELESCOPIC HANDLE SETTINGS: 10.5" / 18.5" / 27"

WE ARE UNABLE TO PERSONALISE THIS ITEM
ALL TRAVEL BAGS ARRIVE IN AN ASPINAL PROTECTIVE LUGGAGE COVER



BLACK CALF &
BLACK HIDE
0443



BROWN CALF &
BROWN HIDE
0444

Suit Carrier

This magnificent handmade leather and canvas suit carrier is ideal for business trips or a weekend away. The large capacity will guarantee one arrives perfectly groomed and without a crease to one's ensemble. Made in high density water resistant canvas and trimmed with smooth bridle calf leather, the solid brass hook can hang up to 15kgs. Included are two deluxe brass hangers plus there is capacity for more to be added. There are two large capacity full width zipped pockets on the inside and two more on the outside with a fully detachable shoulder strap.

SUIT CARRIER
ITEM CODE: 025-0197

42"HO X 23"W X 35"D



BEIGE CANVAS
0813

OLIVE CANVAS
0903



NAVY CANVAS
8371

BLACK CANVAS
0029



Grand Tourer & Weekender Bags

A stunning range of weekend and cabin bags that simply ooze quality. A combination of the finest full grain English bridle leather, quality canvas and solid brass metal zips and fittings. Big enough to pack your whole life in and smart enough to check in at the Ritz.

Purchase the Travel Bag Set and save up to £195.00



BLACK CANVAS
0029

GRAND TOURER
ITEM CODE: 025-0478

WEEKENDER BAG
ITEM CODE: 025-0478

14"HO X 24.6"W X 9.4"D

13"HO X 21.1"W X 8.5"D

TRAVEL BAG SET
ITEM CODE: 025-0196

WE ARE UNABLE TO PERSONALISE THIS ITEM
ALL TRAVEL BAGS ARRIVE IN AN ASPINAL
PROTECTIVE LUGGAGE COVER



BEIGE CANVAS
0015



SMOOTH BLACK
0027



SMOOTH COGNAC
0048



OLIVE CANVAS
0905



NAVY CANVAS
8371



Soho Bag



Drawing inspiration from the hey-day of classic steamer-style bags, we proudly present the Soho Bag. Handmade from soft and supple pebble effect calf hide leather, the effortlessly slouchy design has a deceptively capacious interior. Accented by Aspinal signature antiqued brass hardware for that aged vintage look, the bag stands on brass feet for extra protection. The bag can be carried by its sturdy fully adjustable detachable leather shoulder strap or by the dual top handles.

SOHO OVERNIGHT BAG
ITEM CODE: 025-0934

16" (H) X 19" (D) X 7.5" (L)
HANDLE DROP: 7"
SHOULDER STRAP: 53" (MAX)

WE ARE UNABLE TO PERSONALISE THIS ITEM



Tan
0084



Dark Brown
0003



Black Deer
0529

Boston Bag

Timeless and nostalgic, this classically unstructured "duffle-style" of the Boston Travel Bag should be a permanent staple to every man's packing regime. Handmade from the finest soft and supple pebble effect calf hide leather and accented with decorative rivets and plaque for that aged vintage look. Standing on brass feet, this classic travel bag features dual sturdy grab handles, a large removable luggage tag and a robust detachable shoulder strap for the ultimate in versatility.

BOSTON BAG
ITEM CODE: 025-0936

11" (H) X 21" (W) X 10.5" (D)
HANDLE DROP: 5"
SHOULDER STRAP: 62" (MAX)

WE ARE UNABLE TO
PERSONALISE THIS ITEM



Tan
0084



Dark Brown
0003



Black
0529

Zipped Travel Wallet & Passport Cover

The stunningly handsome and compact Zipped Travel Wallet & Passport Cover is handmade in a choice of smooth bridie, mock croc or deep-shine Italian patent calf leathers and lined in signature soft suede. Inside on the right there are five credit card slots and two slip in compartments to hold your passport and boarding pass. On the left there is one full length open pocket for tickets and documentation, a zipped compartment for currency and a pen loop (pen not included). The matching plain Passport Cover is elegantly embossed with "PASSPORT", and features a signature grosgrain ribbon marker. The passport cover is ideal for personalising with initials.



PURPLE PATENT
& CREAM SUED
0441

ZIPPED TRAVEL WALLET
& PASSPORT COVER
ITEM CODE: 062-0827

THE BRIT TRAVEL WALLET
& PASSPORT COVER
ITEM CODE: 062-0884



THE BRIT
0642



BROWN GALPIKEN &
LEOPARD PRINT WIDE
0763



RED PATENT
& CREAM SUED
0442

THIS ITEM CAN
BE PERSONALISED
WITH UP TO 4
INITIALS (PASSPORT
COVER ONLY)



BLACK CROC
& RED SUED
0017



AMAZON CROC BROWN
& STONE SUED
0802



PURPLE CROC &
CREAM SUED
0388

Candy Case™



PURPLE CROC
E587

The highly coveted Candy Case is the perfect roll-along case for that short getaway. Handmade in an array of colours, the Candy Case has a signature silk mix lining and matching luggage tag. The foldaway telescope handle is tucked away in a neat zipped compartment and the integral wheels are discreetly placed behind the bottom feet, which stand the case in all its glory.



NAVY PATENT & UNION JACK
0542



BROWN PEGGLE CALFSKIN &
LEOPARD PRINT INIDE
E694



RED PATENT
0422



BLACK CROC
0615



AMAZON BROWN CROC
0801



BLACK PATENT
0421

WE ARE UNABLE TO
PERSONALISE THIS ITEM
ALL TRAVEL BAGS ARRIVE IN AN ASPINAL
PROTECTIVE LUGGAGE COVER

CANDY CASE
ITEM CODE: 025-0784

16" (H) X 13" (W) X 8" (D) /
HANDLE DROP: 4"
TELESCOPIC HANDLE: 10.5" TO 36.5"

VIEW OUR FULL CANDY CASE
COLLECTION ONLINE



Personalisation

Customers are asked to allow approximately 5 working days for the personalisation and engraving service. However each order will be dealt with promptly so in most cases we can usually complete within 3 days. At busy times of the year please allow between 7-10 working days for this service.

Personalisation types: your chosen text can be embossed using gold or silver foil as well as blind embossing, a technique of hot stamping into the leather without colour.

Personalisation options are given by each product shown in this catalogue, full details available online.

