

NORWOOD™

Innovative Branded Choices



Bags • Meeting • Travel • Outdoor & Leisure • Drinkware • Housewares • Writing Instruments • Office • Technology • Clocks
Personal, Health & Wellness • Flashlights, Tools & Auto • Silanta®

Symbols & abbreviations

Special options



4-Colour process
4-Colour process is a high quality printing process which allows you to print as many different colours as you want for one low price. The possibilities are endless!

Writing modes



M Medium point



HL Highlighter



G Gel ink



MP Mechanical pencil



FP Fountain pen



R Roller ball



P Pencil

Ink colours

● Black ink

● Blue ink

● Red ink

● Green ink

● Orange Ink

● Pink ink

● Yellow ink

● Purple ink

Other symbols



200 = 2 Kg (approx.)

Packaging information

This icon communicates the packaging information for each product. The number shown inside the box is the quantity of product per polybag. The carton weight is listed next to the box.



New product

Indicates 2013 New products. Look for the "NEW" icon on select product pages.



New colours

Refers to 2013 New colours. Look for the "NEW COLOURS" icon on select product pages.



General information

The page number listed by this icon directs you to additional information.



goinggreen™

We offer product solutions to help you and your customers advocate the so called green. goinggreen is a registered trademark in the USA and in EU and is in progress of registration worldwide.



Cabin friendly

This icon identifies products that meet carry-on luggage limits of most major airlines.



Laptop

Products with this icon are designed to hold and protect a laptop.



Can icon

Number of beverage cans the cooler can accommodate.



Mobius loop

Product contains recycled material. The % of recycled material weight of the product appears next to or inside the mobius loop.



EXCLUSIVE

Exclusive

Exclusive items only available through our catalogue.



WATERPROOF

Water proof

Fabric is able to withstand water, which is suspended on top of the fabric before seeping through.



WINDPROOF

Wind proof

Fabric is able to withstand wind, which is blocked and keeps the warmth inside the garment.



BREATHABLE

Breathable

This is measured by the rate at which water vapour passes through a garment. Measurement in grams of water vapour per square metre of fabric per 24 hour period.



2.0

Water depth

This icon identifies the maximum water depth reachable by the product.



USB capacity

USB memory capacity in Megabites or Gigabites.



Conform ISO 9994

ISO 9994

Conform ISO 9994



Child resistant

This icon identifies the lighters that accomplish the Child Resistant legislation.



TABLET

Tablet

Products with this icon are designed to hold and protect a tablet or e-reader.

Abbreviations

DB: Debossing

DL: Digital label

DO: Doming

EM: Embroidery

L: Laser engraving

PD: Pad printing

SP: Screen printing

TC: Transfer ceramic

TD: Transfer digital

TS: Transfer screen



32059

Technical T-shirt female

High performance technical t-shirt with white side piping.
Regulates humidity, breathable, fast drying.

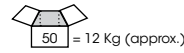
Material: 100% Polyester 140G

Product size: S, M, L

Decoration method/area:



Standard packaging: 5 pcs per polybag



= 12 Kg (approx.)



32060

Technical T-shirt male

High performance technical t-shirt with white side piping.
Regulates humidity, breathable, fast drying.

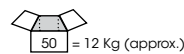
Material: 100% Polyester 140G

Product size: M, L, XL, XXL

Decoration method/area:



Standard packaging: 5 pcs per polybag



= 12 Kg (approx.)



32057

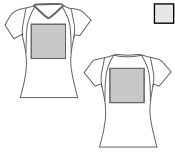
Footing T-shirt female

Absorbing, fast drying, comfortable fitness T-shirt with contrasting shoulder panels.

Material: 100% Polyester 140G

Product size: S, M, L

Decoration method/area:



Standard:

SP: Front or back 250 mm W x 250 mm H
max 4 colours (K)



.53

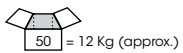


.30



.20

Standard packaging: 5 pcs per polybag



= 12 Kg (approx.)



32058

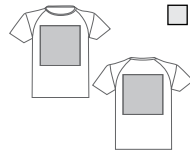
Footing T-shirt male

Absorbing, fast drying, comfortable fitness T-shirt with contrasting shoulder panels.

Material: 100% Polyester 140G

Product size: M, L, XL, XXL

Decoration method/area:



Standard:

SP: Front or back 300 mm W x 300 mm H
max 4 colours (S)



.53

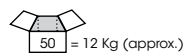


.30



.20

Standard packaging: 5 pcs per polybag



= 12 Kg (approx.)





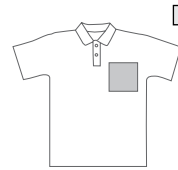
34029
Micropolyester polo male

High quality micro polyester polo t-shirt.

Material: 100% Polyester 170G

Product size: M, L, XL, XXL

Decoration method/area:



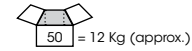
Standard:

SP: Front and back 300 mm W x 300 mm H max 4 colours (S)

Optional:

TD: Front and back 300 mm W x 300 mm H 4 colour process (V)

Standard packaging: 5 pcs per polybag



= 12 Kg (approx.)



34015
Micropolyester polo female

High quality micro polyester polo t-shirt.

Material: 100% Polyester 170G

Product size: S, M, L

Decoration method/area:



Standard:

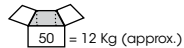
SP: Front and back 170 mm W x 170 mm H max 4 colours (S)

Optional:

TD: Front and back 170 mm W x 170 mm H 4 colour process (V)



Standard packaging: 5 pcs per polybag



= 12 Kg (approx.)



37012
2 Colour sweatshirt

Comfortable 2 colour hooded sweatshirt with tone on tone neck cord.

Material: 80% Cotton / 20% Polyester 280G

Product size: M, L, XL

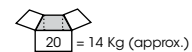
Decoration method/area:



Standard:

SP: Chest: 100 mm W x 100 mm H max 1 colour (S)

Standard packaging: Individual polybag



= 14 Kg (approx.)





32020 .20 32020 .22

32020 .23 32020 .27

32020 .29 32020 .30



32020 .50

32021 .10

32020/32021

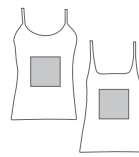
Fitted t-shirt

Fitted t-shirt in 140 g/m², 100% jersey cotton.
Side seams. Individually packed.

Material: 100% cotton

Product size: S - M - L

Decoration method/area:



Standard:

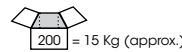
SP: Front or back 170 mm W x 170 mm H
max 4 colours (K)

Optional:

TD: Front or back 170 mm W x 170 mm H
4 colour process (V)

EM: Chest 60 mm W x 60 mm H
max 12 colours (W4)

Standard packaging: 10 pcs. in a polybag



= 15 Kg (approx.)



32029 .22 32029 .23

32029 .30 32029 .33

32029 .51 32029 .52

32029 .53 32029 .62



32029 .20

32030 .10

32029/32030

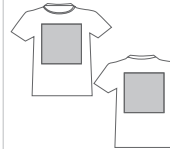
Unisex t-shirt

Unisex t-shirt in 100% 140 g/m² jersey combed cotton with side seams. 1 x 1 rib and taped collar. Individually folded.

Material: 100% combed cotton

Product size: S - M - L - XL - XXL

Decoration method/area:



Standard:

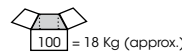
SP: Front or back 300 mm W x 300 mm H
max 4 colours (K)

Optional:

TD: Front or back 300 mm W x 300 mm H
4 colour process (V)

EM: Chest 80 mm W x 80 mm H
max 12 colours (W4)

Standard packaging: 10 pcs. in a polybag



= 18 Kg (approx.)



32011 .20 32011 .22

32011 .23 32011 .29

32011 .30 32011 .33

32011 .52 32011 .62



32011 .50

32012 .10

32011/32012

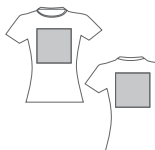
Fitted t-shirt

Fitted t-shirt in 140 g/m², 100% jersey combed cotton with side seams. 1 x 1 rib and welted collar. Individually packed.

Material: 100% combed cotton

Product size: S - M - L - XL

Decoration method/area:



Standard:

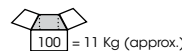
SP: Front or back 250 mm W x 250 mm H
max 4 colours (K)

Optional:

TD: Front or back 250 mm W x 250 mm H
4 colour process (V)

EM: Chest 60 mm W x 60 mm H
max 12 colours (W4)

Standard packaging: 10 pcs. in a polybag



= 11 Kg (approx.)



32035/32036

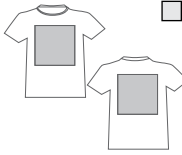
Unisex t-shirt

Unisex t-shirt in 100% 180 g/m² jersey combed cotton with side seams. 1 x 1 rib and taped collar. Individually packed.

Material: 100% combed cotton

Product size: M - L - XL - XXL

Decoration method/area:



Standard:

SP: Front or back 300 mm W x 300 mm H max 4 colours (S)

Optional:

TD: Front or back 300 mm W x 300 mm H 4 colour process (V)

EM: Chest 80 mm W x 80 mm H max 12 colours (W4)

Standard packaging: Polybag



50 = 13,5 Kg (approx.)



32017

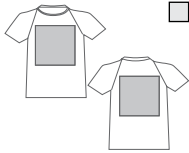
Jersey raglan sleeve t-shirt

Unisex t-shirt in 100% jersey cotton with side seams. 1 x 1 rib and taped collar. Individually folded.

Material: 100% cotton

Product size: M - L - XL - XXL

Decoration method/area:



Standard:

SP: Front or back 300 mm W x 300 mm H max 4 colours (S)

Optional:

TD: Front or back 300 mm W x 300 mm H 4 colour process (V)

EM: Chest 80 mm W x 80 mm H max 12 colours (W4)

Standard packaging: Polybag



50 = 12,35 Kg (approx.)



34011/34012

Woman's polo shirt

Fitted polo shirt in 100% semi-combed cotton. Welled collar. Individually packed.

Material: 100% semi-combed cotton

Product size: S - M - L - XL

Decoration method/area:



Standard:

EM: Chest 60 mm W x 60 mm H max 12 colours (W4)

Optional:

SP: Back 170 mm W x 170 mm H max 4 colours (S)

TD: Back 170 mm W x 170 mm H 4 colour process (V)

Standard packaging: Polybag



100 = 19,6 Kg (approx.)





.30

.33

.53



.27

32016

Fitted mandarin collar t-shirt

Fitted Mandarin collar t-shirt in jersey 95% combed cotton and 5% 200 g/m² elastane. Welled collar. Individually packed.

Material: 95% combed cotton and 5% elastane.

Product size: S - M - L

Decoration method/area:



Standard:

EM: Chest 60 mm W x 60 mm H
max 12 colours (W4)

Optional:

SP: Front or back 170 mm W x 170 mm H
max 4 colours (S)

TD: Front or back 170 mm W x 170 mm H
4 colour process (V)

Standard packaging: Polybag



100 = 18,2 Kg (approx.)



34020 .20

34020 .22

34020 .23

34020 .27

34020 .30

34020 .33

34020 .50

34020 .52

34020 .53

34020 .62



34020 .29



34021 .10

34020/34021

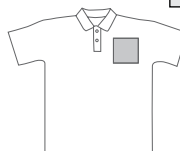
Unisex pique polo shirt

Unisex polo shirt in 100% 190 g/m² combed cotton. 1 x 1 rib in collar and cuffs. Welled collar. Spare button. Individually packed.

Material: 100% combed cotton

Product size: S - M - L - XL - XXL

Decoration method/area:



Standard:

EM: Chest 80 mm W x 80 mm H
max 12 colours (W4)

Optional:

SP: Back 300 mm W x 300 mm H
max 4 colours (S)

TD: Back 300 mm W x 300 mm H
4 colour process (V)

Standard packaging: Polybag



50 = 14,5 Kg (approx.)



34022 .20

34022 .33

34022 .50

34022 .52

34022 .30



34022 .23



34023 .10

34022/34023

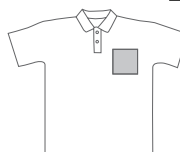
Unisex pique polo shirt with pocket

Unisex polo shirt in 100% 190 g/m² combed cotton. 1 x 1 rib in collar and cuffs. Welled collar. Spare button. Individually packed.

Material: 100% combed cotton

Product size: S - M - L - XL - XXL

Decoration method/area:



Standard:

EM: Chest 80 mm W x 80 mm H
max 12 colours (W4)

Optional:

SP: Back 300 mm W x 300 mm H
max 4 colours (S)

TD: Back 300 mm W x 300 mm H
4 colour process (V)

Standard packaging: Polybag



50 = 15 Kg (approx.)



34014

Unisex polo shirt

Unisex polo shirt in 100% 190 g/m² semi-combed cotton. 1 x 1 contrasting rib in collar and cuffs. Welled collar. Spare button. Individually packed.

Material: 100% semi-combed cotton

Product size: S - M - L - XL - XXL

Decoration method/area:



Standard:

EM: Chest 80 mm W x 80 mm H
max 12 colours (W4)

Optional:

SP: Back 300 mm W x 300 mm H
max 4 colours (S)

TD: Back 300 mm W x 300 mm H
4 colour process (V)

Standard packaging: Polybag



= 14,4 Kg (approx.)



.22



.20

.30

.52

.62

34033

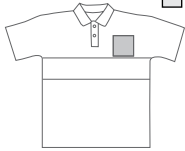
Unisex polo shirt horizontal stripes

Unisex pique polo shirt in 190 g/m² 100% cotton. 1 x 1 rib and taped collar. Side slits at bottom. Spare button. Individually packed.

Material: 100% cotton

Product size: S - M - L - XL - XXL

Decoration method/area:



Standard:

EM: Chest 70 mm W x 70 mm H
max 12 colours (W4)

Optional:

SP: Chest 70 mm W x 70 mm H
max 4 colours (S)

TD: Chest 70 mm W x 70 mm H
4 colour process (V)

Standard packaging: Polybag



= 15 Kg (approx.)



.53



.20

.22

.29

34024

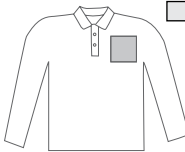
Unisex polo shirt long sleeve

Unisex polo shirt in 100% 210 g/m² cotton. 1 x 1 rib in collar and cuffs. Welled collar. Spare button. Individually packed.

Material: 100% cotton

Product size: S - M - L - XL - XXL

Decoration method/area:



Standard:

EM: Chest 80 mm W x 80 mm H
max 12 colours (W4)

Optional:

SP: Back 300 mm W x 300 mm H
max 4 colours (S)

TD: Back 300 mm W x 300 mm H
4 colour process (V)

Standard packaging: Polybag



= 19,65 Kg (approx.)



.20



.21

.30

.33

.50

.52

.53

.62



36012

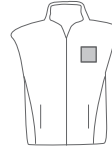
Fleece-lined waistcoat with contrasting shoulders and side

100% fleece lining waistcoat with anti pilling finish. Shoulders and sides reinforced in 100% polyamide. Individually packed.

Material: Fleece lining

Product size: M - L - XL - XXL

Decoration method/area:



Standard:

EM: Chest 90 mm W x 90 mm H
max 12 colours (W1)

Standard packaging: Polybag



20 = 10,36 Kg (approx.)



36010

Multipocket vest

Multipocket waistcoat in 100% cotton twill. Big pocket with zip in the back. Inside 2 pockets with easy closure. Individually packed.

Material: 100% cotton twill

Product size: M - L - XL - XXL

Decoration method/area:



Standard:

SP: Chest 80 mm W x 80 mm H
max 4 colours (Y)

Optional:

TD: Chest 80 mm W x 80 mm H
4 colour process (V)

EM: Chest 80 mm W x 80 mm H
max 12 colours (W1)

Standard packaging: Polybag



50 = 21 Kg (approx.)



36007

Waistcoat in polyester poplin

Waistcoat in 65% polyester poplin, 35% cotton with 160 g/m² polyester lining. Inside pocket with easy closure. Inside zip at the bottom of the garment to allow easy branding. Individually packed.

Material: 65% Polyester poplin, 35% cotton

Product size: M - L - XL - XXL

Decoration method/area:



Standard:

TD: Chest 100 mm W x 100 mm H
4 colour process (V)

Optional:

EM: Chest 100 mm W x 100 mm H
max 12 colours (W1)

Standard packaging: Polybag



20 = 11,76 Kg (approx.)



36008

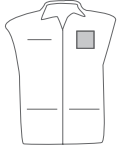
Micro-fibre argyle lined waistcoat

Waistcoat in 100% polyester micro-fibre, with 120 g/m² polyester lining and corduroy collar with seam-covering tape. Individually packed.

Material: 100% Polyester micro-fibre

Product size: M - L - XL - XXL

Decoration method/area:



- Standard:**
EM: Chest 100 mm W x 100 mm H
max 12 colours (W1)
- Optional:**
TD: Chest 100 mm W x 100 mm H
4 colour process (V)

Standard packaging: Polybag



20 = 8,76 Kg (approx.)



.62



.20

.41

.52

36011

Reversible waistcoat

Reversible waistcoat. 100% polyamide exterior and fleece lining interior with 200 g/m², 100% polyester anti pilling finish. Pocket on breast to allow branding. Individually packed.

Material: 100% Polyamide exterior and interior 100% polyester

Product size: M - L - XL - XXL

Decoration method/area:



- Standard:**
SP: Chest 70 mm W x 60 mm H
max 4 colours (Y)
- Optional:**
TD: Chest 70 mm W x 60 mm H
4 colour process (V)
- EM: Chest 70 mm W x 60 mm H
max 12 colours (W1)

Standard packaging: Polybag



25 = 15,55 Kg (approx.)



.20

.41

.52

36014

Micro-fibre cotton quilted waistcoat

Lined waistcoat in 100% polyester micro-fibre with 210 g/m² feather-effect quilting. Inside pocket with zip. Interior zip at bottom of garment to allow branding. Individually packed.

Material: 100% Polyester

Product size: M - L - XL - XXL

Decoration method/area:



- Standard:**
TD: Chest 90 mm W x 80 mm H
4 colour process (V)
- Optional:**
SP: Chest 90 mm W x 80 mm H
max 1 colour (Y)
- EM: Chest 90 mm W x 80 mm H
max 12 colours (W1)

Standard packaging: Polybag



10 = 7 Kg (approx.)



.33



.20

.30

.52



35012

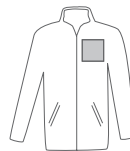
Sweatshirt jacket

Unhooded filled fleece jacket in 65% polyester and 35% cotton fleece 280 g/m².

Material: 65% Polyester and 35% cotton fleece

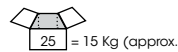
Product size: XS - S - M - L - XL - XXL

Decoration method/area:



- Standard:**
SP: Chest 100 mm W x 100 mm H
 max 4 colours (S)
- Optional:**
TD: Chest 100 mm W x 100 mm H
 4 colour process (V)
- EM:** Chest 100 mm W x 100 mm H
 max 12 colours (W1)

Standard packaging: Polybag



= 15 Kg (approx.)



37005

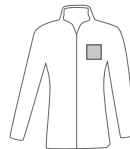
Fitted fleece jacket

Fitted fleece jacket in 300 g/m² 100% polyester and anti pilling finish. Individually wrapped.

Material: 100% Polyester

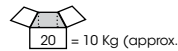
Product size: S - M - L - XL

Decoration method/area:



- Standard:**
EM: Chest 80 mm W x 80 mm H
 max 12 colours (W1)

Standard packaging: Polybag



= 10 Kg (approx.)



37006

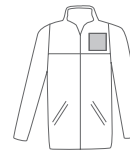
Fleece jacket

Fleece jacket in 300 g/m² 100% polyester and anti pilling finish. Individually wrapped.

Material: 100% Polyester

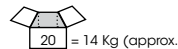
Product size: S - M - L - XL - XXL

Decoration method/area:



- Standard:**
EM: Chest 100 mm W x 100 mm H
 max 12 colours (W1)

Standard packaging: Polybag



= 14 Kg (approx.)

35009

Hooded fitted sweatshirt

Hooded fitted sweatshirt in 65% polyester and 35% cotton, 280 g/m². Individually packed.

Material: 65% Polyester and 35% cotton

Product size: XS - S - M - L - XL - XXL

Decoration method/area:



- Standard:**
SP: Chest 100 mm W x 100 mm H
max 4 colours (S)
- Optional:**
TD: Chest 100 mm W x 100 mm H
4 colour process (V)
- EM:** Chest 100 mm W x 100 mm H
max 12 colours (W1)



.62



.20

.22

.30

Standard packaging: Polybag



25 = 14,5 Kg (approx.)



31037

Waterproof sports windbreaker with thermo-sealed seams

Waterproof windbreaker in 100% polyester with grooved lining. Hood hidden in collar. Thermo-sealed seams. Interior zip at bottom of garment to allow branding. Individually packed.

Material: 100% Polyester

Product size: M - L - XL - XXL

Decoration method/area:



- Standard:**
TD: Chest 100 mm W x 100 mm H
4 colour process (V)
- Optional:**
SP: Chest 100 mm W x 100 mm H
max 1 colour (Y)
- EM:** Chest 100 mm W x 100 mm H
max 12 colours (W1)



.50



.20

.41

Standard packaging: Polybag



25 = 17 Kg (approx.)





.30
.20
.52



.22

31035

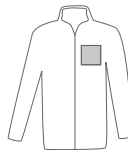
Waterproof windbreaker with thermo-sealed seams

Waterproof windbreaker in 100% polyester with grooved lining. Hood hidden in collar. Thermo-sealed seams. Interior zip at bottom of garment to allow branding. Individually packed.

Material: 100% Polyester

Product size: M - L - XL - XXL

Decoration method/area:



Standard:

EM: Chest 100 mm W x 100 mm H
max 12 colours (W1)

Optional:

SP: Chest 100 mm W x 100 mm H
max 1 colour (Y)

TD: Chest 100 mm W x 100 mm H
4 colour process (V)

Standard packaging: Polybag



= 13,06 Kg (approx.)



.20 .33 .52



.44

31034

Waterproof windbreaker with thermo-sealed seams

Waterproof windbreaker in 100% polyester micro-fibre with grooved lining. Inside pocket with zip. Hood hidden in collar. Thermo-sealed seams. Interior zip at bottom of garment to allow branding. Individually packed.

Material: 100% Polyester micro-fibre

Product Size: M - L - XL - XXL

Decoration Method/Area:



Standard:

TD: Chest 100 mm W x 100 mm H
4 colour process (V)

Optional:

SP: Chest 100 mm W x 100 mm H
max 1 colour (Y)

EM: Chest 100 mm W x 100 mm H
max 12 colours (W1)

Standard Packaging: Polybag



= 17,06 Kg (approx.)



.41
.44
.52



.20

31036

Waterproof windbreaker

100% Polyester waterproof windbreaker. Lining: upper part in 200 g/m² 100% polyester anti pilling finish and lower part in lined 100% polyester. 3 inside pockets. Hood concealed in collar. Individually packed.

Material: 100% Polyester

Product size: M - L - XL - XXL

Decoration method/area:



Standard:

EM: Chest 100 mm W x 100 mm H
max 12 colours (W1)

Optional:

SP: Chest 100 mm W x 100 mm H
max 1 colour (Y)

TD: Chest 100 mm W x 100 mm H
4 colour process (V)

Standard packaging: Polybag



= 20,96 Kg (approx.)



31032

Waterproof fitted parka

100% Polyamide waterproof fitted jacket. Lining: upper part in 280 g/m² 100% polyester antipilling finish and lower part in lined 140 g/m² 100% polyester. 3 inside pockets. Storm hood with peak concealed in collar. Individually packed.

Material: 100% Polyamide

Product size: S - M - L - XL

Decoration method/area:



Standard:

EM: Chest 80 mm W x 80 mm H
max 12 colours (W1)

Optional:

SP: Chest 80 mm W x 80 mm H
max 1 colours (Y)

TD: Chest 80 mm W x 80 mm H
4 colour process (V)



.29



.20

.30

.53

Standard packaging: Polybag



20 = 18,4 Kg (approx.)



31030

Waterproof parka

100% Polyamide waterproof jacket. Lining: upper part in 280 g/m² 100% polyester antipilling finish and lower part in lined 140 g/m² 100% polyester. 3 inside pockets. Storm hood with peak concealed in collar. Individually packed.

Material: 100% Polyamide

Product size: M - L - XL - XXL

Decoration method/area:



Standard:

TD: Back 250 mm W x 250 mm H
4 colour process (V)

Optional:

SP: Back 250 mm W x 250 mm H
max 1 colour (Y)

EM: Back 70 mm W x 70 mm H
max 12 colours (W1)



.50



.20

.41

.53

Standard packaging: Polybag



10 = 11,64 Kg (approx.)





.30

31040

Unisex technical soft shell jacket

Unisex technical soft shell jacket in 100D polyester 4 way stretch and TPU membrane 800 cm waterproof and breathable 800 MVP. Thermo-sealed seams. Individually packed.

Material: 100D Polyester

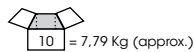
Product size: XS - S - M - L - XL - XXL

Decoration method/area:



- Standard:**
SP: Chest 100 mm W x 100 mm H
 max 1 colour (Y)
- Optional:**
TD: Chest 100 mm W x 100 mm H
 4 colour process (V)

Standard packaging: Polybag



= 7.79 Kg (approx.)



.20

.30

.33

.52

.22

31025

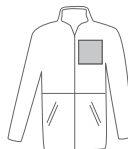
3-in-1 windproof and waterproof parka

Parka: 100% polyamide, with hood concealed in collar and inside zip at the bottom of the garment to allow easy marking. Fleece lining: 250 g/m² 100% polyester removable garment with antipilling finish.

Material: Parka: 100% polyamide, fleece lining: 100% polyester

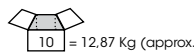
Product size: S - M - L - XL - XXL

Decoration method/area:



- Standard:**
EM: Chest 100 mm W x 100 mm H
 max 12 colours (W1)
- Optional:**
SP: Chest 100 mm W x 100 mm H max 1 colour (Y)
TD: Chest 100 mm W x 100 mm H
 4 colour process (V)

Standard packaging: Polybag



= 12.87 Kg (approx.)



.30

.20

.52

.33

31038

4-in-1 waterproof, breathable parka

4-in-1 jacket waterproof (5,000 mm/cm²), breathable (3,000g/24h) and thermo-sealed seams. Jacket: 100% polyamide with storm hood hidden in collar. Windproof centre double flap with double carriage zip. Armpit vent with zip for better air circulation.

Material: 100% Polyamide

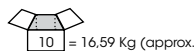
Product size: S - M - L - XL - XXL

Decoration method/area:



- Standard:**
TD: Back 250 mm W x 250 mm H
 4 colour process (V)
- Optional:**
SP: Back 250 mm W x 250 mm H max 1 colours (Y)
EM: Back 200 mm W x 100 mm H max 12 colours (W)

Standard packaging: Polybag



= 16.59 Kg (approx.)

