

*Chopard*



# Happy Snow



## HAPPY SNOW SCARVES 50X50 CM

REFERENCES:	95/1203281/5	BEIGE / CORAL
	95/1203281/1	SKY BLUE / WHITE
	95/1203281/2	FUCHSIA / RED
	95/1203281/11	TURQUOISE / YELLOW

MATERIALS: 100% TWILL SILK, MADE IN ITALY



# Logo



## LOGO SCARVES 50X50 CM

REFERENCES:	95/5420/7	WHITE / RED
	95/5420/78	IVORY / LILAC
	95/5420/79	IVORY / PINK
	95/5420/3	APPLE / SKY BLUE
	95/5420/9	PINK / FUCHSIA
	95/5420/6	PEARL / GREY

MATERIALS: 100% TWILL SILK, MADE IN ITALY



# Cashmere Shawls



## CASHMERE SHAWLS 140X140 CM

REFERENCES:	95/1204261/7	WHITE / GREY
	95/1204261/1	WHITE / BEIGE
	95/1204261/2	WHITE / RED

MATERIALS: 100% CASHMERE, MADE IN ITALY



# *Logo Double Satin*



## LOGO DOUBLE SATIN HEADSCARVES 70X210 CM

REFERENCES:	95/1207012/2	BLACK / ORANGE
	95/1207012/21	BLACK / FUCHSIA
	95/1207012/8	BLACK / VIOLET
	95/1207012/6	BLACK
	95/1207012/3	BLACK / GREEN

MATERIALS: 18% SILK, 82% VISCOSE, MADE IN ITALY



# *Double Logo Stoles*



## DOUBLE LOGO STOLES WITH FRINGE 70X180 CM

REFERENCES:	95/1205022/6	BLACK
	95/1205022/3	LIGHT GREEN
	95/1205022/1	SKY BLUE
	95/1205022/2	ORANGE
	95/1205022/21	PINK

MATERIALS: 35% SILK, 30% WOOL, 35% CASHMERE  
MADE IN ITALY



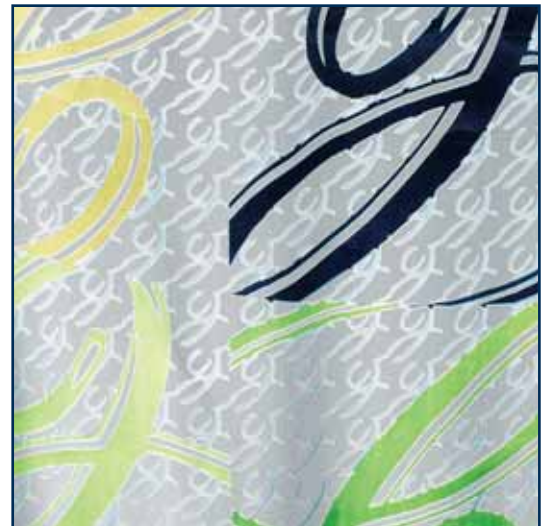
# *Logomania Dévoré*



## LOGOMANIA DEVORE STOLES 70X200 CM

REFERENCES:	95/1207011/11	BLUE
	95/1207011/1	NAVY BLUE
	95/1207011/21	FUCHSIA
	95/1207011/8	LILAC
	95/1207011/6	BLACK

MATERIALS: 100% SATIN SILK DEVORE, MADE IN ITALY



# Lifestyle



## LIFESTYLE SCARVES 90X90 CM

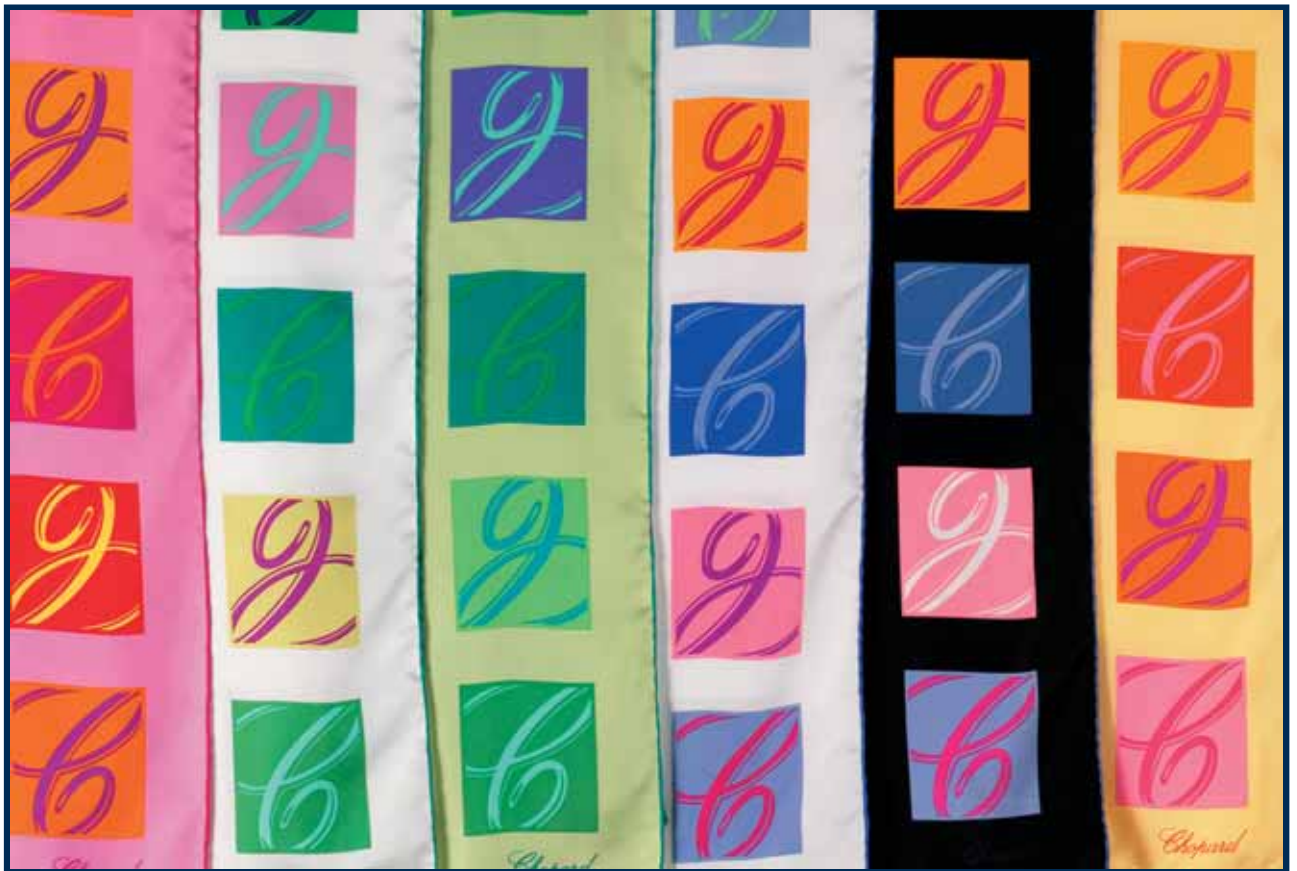
REFERENCES:	95/1202242/6	BLACK
	95/1202242/2	CORAL
	95/1202242/21	ORANGE
	95/1202242/8	LILAC
	95/1202242/1	SKY BLUE
	95/1202241/12	PASTEL PINK

MATERIALS: 100% TWILL SILK, MADE IN ITALY





# “ C ” Logo



## “ C ” LOGO SCARVES 90X90 CM

REFERENCES:	95/1202011/71	WHITE / SKY BLUE
	95/1202011/7	WHITE / TURQUOISE
	95/1202011/6	BLACK / ROYAL BLUE
	95/1202011/2	PINK / FUCHSIA
	95/1202011/3	APPLE / EMERALD
	95/1202011/4	LEMON / ORANGE

MATERIALS: 100% TWILL SILK, MADE IN ITALY





## GSTAAD SCARVES 90X90CM

REFERENCES:	95/1202261/1	NAVY BLUE
	95/1202261/21	RED / BEIGE
	95/1202261/11	SKY BLUE
	95/1202261/3	GREEN
	95/1202261/2	RED / WHITE

MATERIALS: 100 % TWILL SILK, MADE IN ITALY



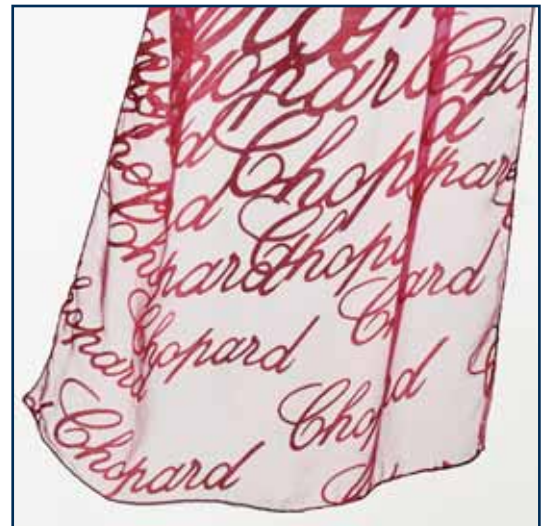
# Logo Dévoré



## LOGO DEVORE STOLES 70X200CM

REFERENCES:	95/1205016/10	FUCHSIA
	95/1205016/4	YELLOW
	95/1205016/12	TURQUOISE
	95/1205016/15	ORANGE
	95/1205016/8	LILAC
	95/1205016/6	BLACK
	95/1205016/11	CLARET
	95/1205016/7	WHITE
	95/1205016/13	GREY
	95/1205016/1	BLUE

MATERIALS: 70% SILK, 30% VISCOSE, MADE IN ITALY



# Art Déco Taffetas



## ART DECO TAFFETAS 20X220CM

REFERENCES:	95/1205019/6	BLACK
	95/1205019/16	PLUM
	95/1205019/4	GOLD
	95/1205019/11	CLARET

MATERIALS: 100% TAFFETAS SILK, MADE IN ITALY



CAN BE DELIVERED UNTIL STOCK RUNS OUT

# Mid-season Logomania



## MID-SEASON LOGOMANIA STOLES 55X200CM

REFERENCES:	95/1205020/10	PINK / ORANGE
	95/1205020/7	WHITE / PERLE
	95/1205020/1	TURQUOISE / ACQUA
	95/1205020/5	WHITE / BEIGE
	95/1205020/3	APPLE GREEN / LEMON

MATERIALS: 100 % SILK, MADE IN ITALY



# *Butterflies Shawls & Headscarves*



## BUTTERFLIES SHAWLS 140X140CM

REFERENCES:	95/2432/1	GREY
	95/2432/2	BLACK
	95/2432/3	NAVY BLUE
	95/2432/4	ORANGE
	95/2432/5	BEIGE
	95/2432/6	BROWN

MATERIALS: 100% CHIFFON SILK, MADE IN ITALY

## BUTTERFLIES HEADSCARVES 200X70CM

REFERENCES:	95/2432/1-0	GREY
	95/2432/2-0	BLACK
	95/2432/3-0	NAVY BLUE
	95/2432/4-0	ORANGE
	95/2432/5-0	BEIGE
	95/2432/6-0	BROWN

MATERIALS: 100% CHIFFON SILK, MADE IN ITALY

# *Headscarves - Wild Rose*



## HEADSCARVES- WILD ROSE 70X200 CM

REFERENCES: 95/1202141/9 PASTEL PINK

95/1202141/1 TURQUOISE

95/1202141/6 BLACK

95/1202141/7 CREAM

95/1202141/5 BEIGE

MATERIALS: 100% CHIFFON SILK, MADE IN ITALY



CAN BE DELIVERED UNTIL STOCK RUNS OUT

# Evening Bags



REFERENCES: 95/9697 EVENING BAG, ROSE JACQUARD BROWN-LIGHT SALMON, GOLD-PLATED CLASP  
95/9698 EVENING BAG, ROSE JACQUARD BLACK-RED, SILVER-PLATED CLASP  
95/9699 EVENING BAG, LOGO JACQUARD BLACK-GOLD, SILVER-PLATED CLASP

MATERIALS: SILK - SOLID SILVER CLASP WITH WHITE GOLD OR YELLOW GOLD PLATING

DIMENSIONS: BAG: 26 X 10 X 4.5 CM  
BOX : 26 X 15.5 X 11 CM

CAN BE DELIVERED UNTIL STOCK RUNS OUT



# *Gentlemen Logo Stole*



## GENTLEMEN LOGO STOLES 55X200CM

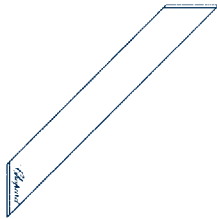
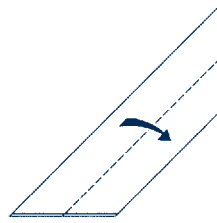
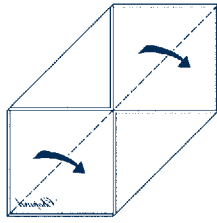
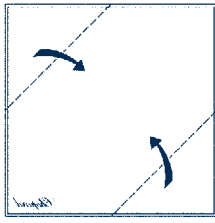
REFERENCES:	95/1206171/5	DARK BROWN
	95/1206171/11	CLARET
	95/1206171/51	CAMEL
	95/1206171/6	BLACK

MATERIALS: 50% SILK, 50% CASHMIRE  
MADE IN ITALY

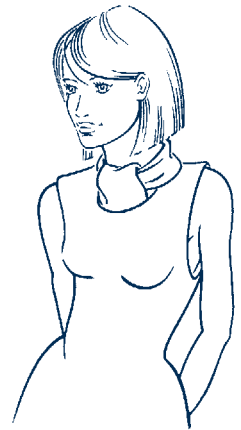
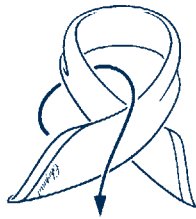
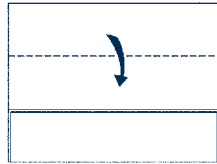
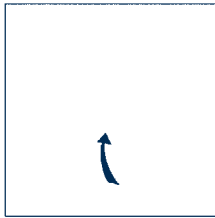


# The art of knotting a scarf

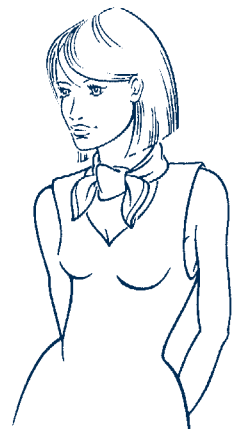
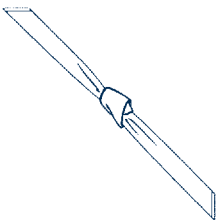
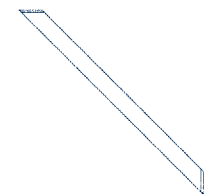
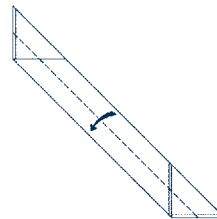
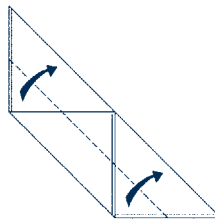
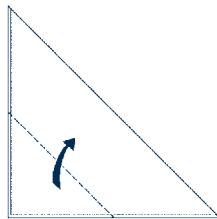
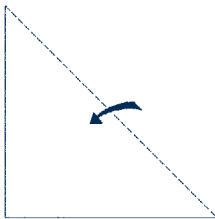
## SIMPLE KNOT



## CLASSIC KNOT



## BUTTERFLY KNOT

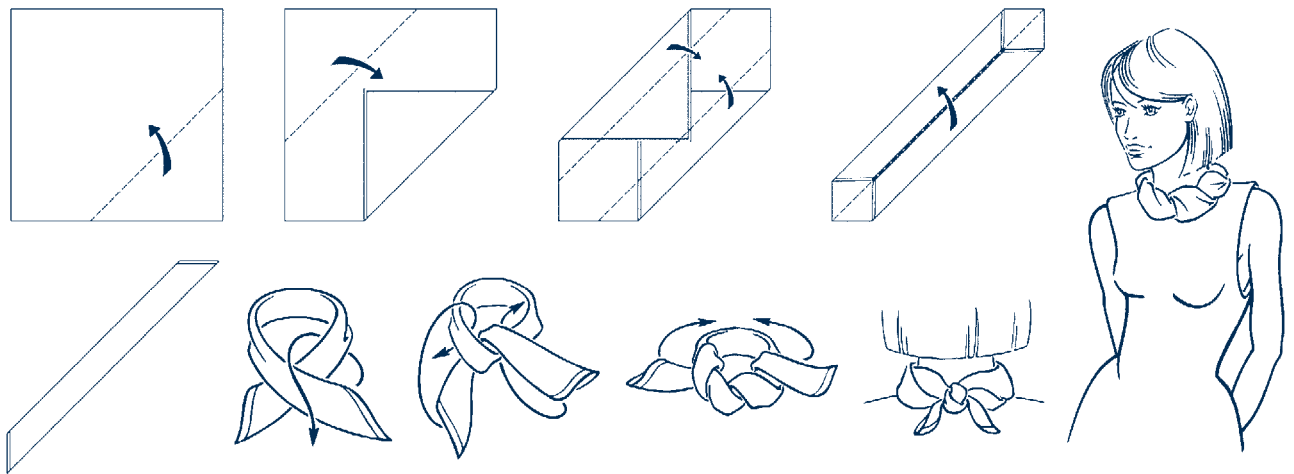


## ADVICE ON CARE

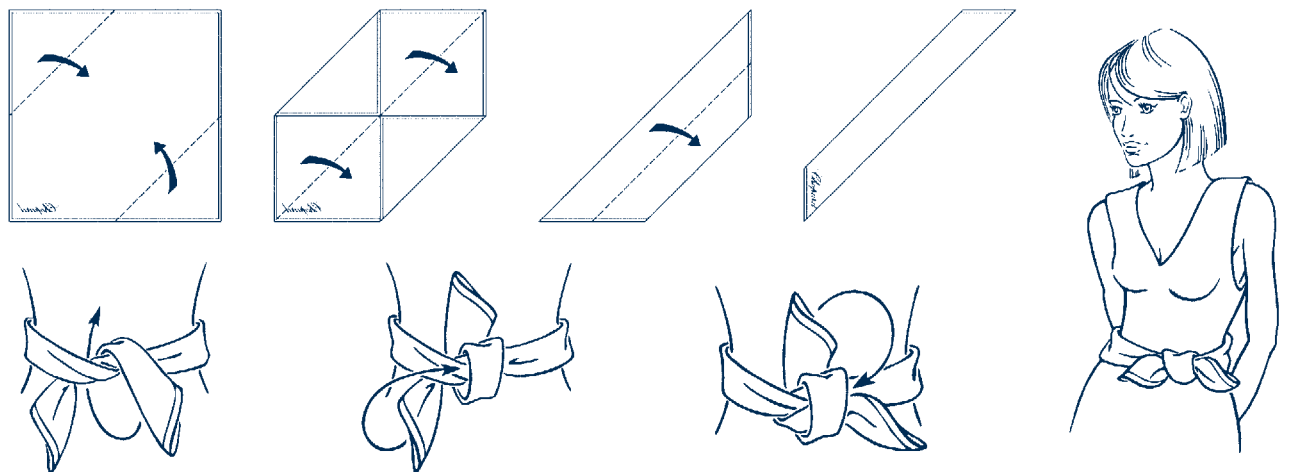
WE SUGGEST THAT YOU UNTIE YOUR SCARF KNOT AFTER EACH USE. IF IT IS CRUMPLED YOU CAN GENTLY IRON IT UNDER A LUKE WARM HEAT AND IT WILL NATURALLY RECOVER ITS SHAPE. BE CAREFUL WITH FRAGRANCES ON THE SILK, THESE PRODUCTS CONTAIN ALCOHOL THAT CAN DAMAGE THE COLOURS. FINALLY WE HIGHLY RECOMMEND THAT YOU SEND YOUR SCARF TO THE DRY CLEANERS.

# The art of knotting a scarf

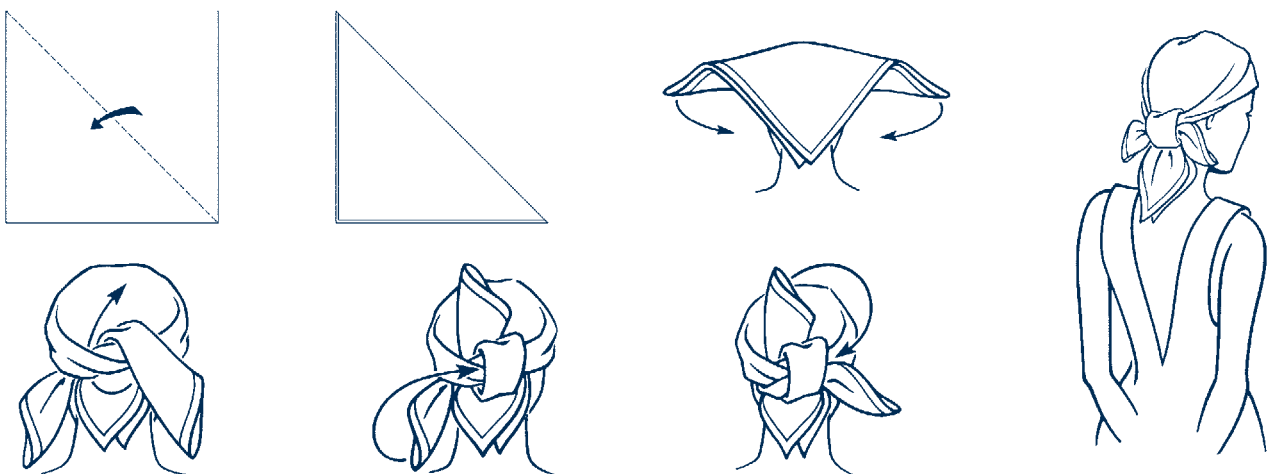
## NECKLACE KNOT



## WAISTBAND KNOT



## HAT KNOT



## ADVICE ON CARE

WE SUGGEST THAT YOU UNTIE YOUR SCARF KNOT AFTER EACH USE. IF IT IS CRUMPLED YOU CAN GENTLY IRON IT UNDER A LUKE WARM HEAT AND IT WILL NATURALLY RECOVER ITS SHAPE. BE CAREFUL WITH FRAGRANCES ON THE SILK, THESE PRODUCTS CONTAIN ALCOHOL THAT CAN DAMAGE THE COLOURS. FINALLY WE HIGHLY RECOMMEND THAT YOU SEND YOUR SCARF TO THE DRY CLEANERS.

# *Tyre*



REFERENCES : 95/1201027/1 BLUE  
95/1201027/6 GREY  
95/1201027/2 ORANGE  
95/1201027/21 PINK

MATERIALS: 100% PRINTED TWILL SILK, MADE IN ITALY

# *Gran Turismo*



REFERENCES : 95/1201027/11 BLUE  
95/1201027/12 SKY BLUE  
95/1201027/22 PINK  
95/1201027/4 YELLOW

MATERIALS: 100% PRINTED TWILL SILK, MADE IN ITALY

# Design 1



REFERENCES:	95/1201014/1	NAVY BLUE / BLUE
	95/1201014/11	NAVY BLUE / RUST
	95/1201014/5	BROWN / RUST
	95/1201014/2	CLARET
	95/1201014/3	GREEN
	95/1201014/8	VIOLET
	95/1201014/6	BLACK
	95/1201014/12	ROYAL BLUE
	95/1201014/31	ACQUA
	95/1201014/81	LILAC
	95/1201014/21	RASPBERRY
	95/1201014/9	ORANGE
	95/1201014/22	PINK
	95/1201014/13	SKY BLUE

MATERIALS: 100% JACQUARD SILK, MADE IN ITALY

## *Design 2*



REFERENCES: 95/1201020/1 NAVY BLUE / WHITE  
95/1201020/11 NAVY BLUE / SKY BLUE  
95/1201020/6 BLACK / GREY  
95/1201020/8 LILAC  
95/1201020/3 GREEN

MATERIALS: 100% JACQUARD SILK, MADE IN ITALY

# Design 3



- REFERENCES: 95/1201016/4 YELLOW  
95/1201016/9 ORANGE  
95/1201016/2 RED  
95/1201016/8 PURPLE  
95/1201016/11 ROYAL BLUE  
95/1201016/1 NAVY BLUE  
95/1201016/12 SKY BLUE  
95/1201016/21 PINK

MATERIALS: 100% JACQUARD SILK, MADE IN ITALY



# Design 4



REFERENCES:	95/1201017/3	PISTACHIO
	95/1201017/4	YELLOW
	95/1201017/9	ORANGE
	95/1201017/2	DARK PINK
	95/1201017/8	LILAC
	95/1201017/21	PINK
	95/1201017/1	SKY BLUE
	95/1201017/11	NAVY BLUE
	95/1201017/22	RED
	95/1201017/31	GREEN
	95/1201017/81	PURPLE
	95/1201017/6	BLACK

MATERIALS: 100% JACQUARD SILK, MADE IN ITALY

# Design 5



REFERENCES:	95/1201019/1	BLUE / LIGHT BLUE
	95/1201019/8	BLUE / VIOLET
	95/1201019/2	BLUE / RED
	95/1201019/9	BLUE / ORANGE
	95/1201019/11	BLUE / NAVY BLUE
	95/1201019/21	RED / NAVY BLUE
	95/1201019/13	GREY / NAVY BLUE
	95/1201019/4	YELLOW
	95/1201019/91	ORANGE
	95/1201019/81	LILAC
	95/1201019/22	PINK
	95/1201019/3	GREEN
	95/1201019/12	SKY BLUE

MATERIALS: 100% JACQUARD SILK, MADE IN ITALY

# Design 6



REFERENCES:	95/1201028/1	NAVY BLUE
	95/1201028/8	DARK VIOLET
	95/1201028/2	CLARET
	95/1201028/5	BROWN / ORANGE
	95/1201028/6	GREEN
	95/1201028/11	BLUE
	95/1201028/12	ACQUA
	95/1201028/81	VIOLET
	95/1201028/21	RED
	95/1201028/3	PISTACHIO
	95/1201028/51	BROWN
	95/1201028/13	BLUE / GREEN
	95/1201028/14	BLUE / SKY BLUE
	95/1201028/15	BLUE / LILAC
	95/1201028/16	BLUE / FUCHSIA
	95/1201028/17	BLUE / YELLOW
	95/1201028/61	BLACK / WHITE

MATERIALS: 100% JACQUARD SILK, MADE IN ITALY

# *Cubes Ties*



REFERENCES:	95/1201031/61	GREY BLUE
	95/1201031/1	NAVY BLUE
	95/1201031/13	PASTEL BLUE
	95/1201031/31	BOTTLE GREEN
	95/1201031/52	BROWN
	95/1201031/41	OCHRE
	95/1201031/2	RUBY
	95/1201031/21	PINK
	95/1201031/53	RUST
	95/1201031/42	GOLD
	95/1201031/5	CHOCOLATE BROWN
	95/1201031/51	BEIGE

MATERIALS: 100% JACQUARD SILK. ENTIRELY HAND SEWN, THIS SEVEN-FOLD TIE TAKES AS MUCH AS FIVE TIMES MORE MAN HOURS AND TWICE AS MUCH SILK TO MANUFACTURE THAN A NORMAL TIE.

# Club



REFERENCES:	95/1201111/2	CLARET
	95/1201111/6	BLACK
	95/1201111/1	NAVY BLUE
	95/1201111/11	NAVY BLUE / WHITE
	95/1201111/91	PINK / BLUE
	95/1201111/27	RED / CREAM

MATERIALS: 100% JACQUARD SILK

CAN BE DELIVERED UNTIL STOCK RUNS OUT

# The art of knotting a tie

## SIMPLE KNOT

THIS KNOT IS SUITED TO ALL TYPES OF SHIRT COLLARS AND WORKS WELL WITH MOST SILKS (TWILL SILK, JACQUARD SILK, ETC...). IT IS EASY AND QUICK TO TIE.



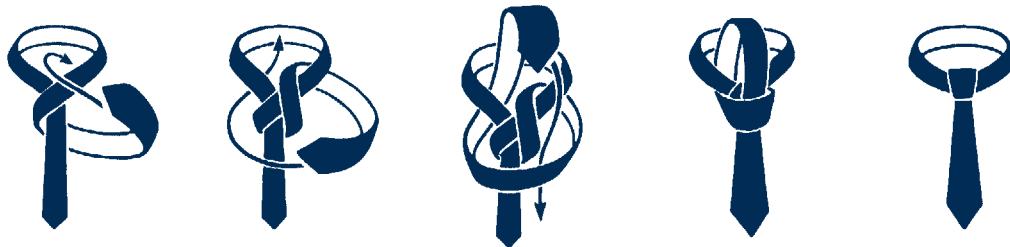
## WINDSOR

THIS KNOT PRODUCES A CONE-SHAPED LOOK AND IS PARTICULARLY WELL SUITED TO WING-COLLAR SHIRTS. IT WORKS BEST WITH A NARROW TIE AS IT IS SOMEWHAT VOLUMINOUS.



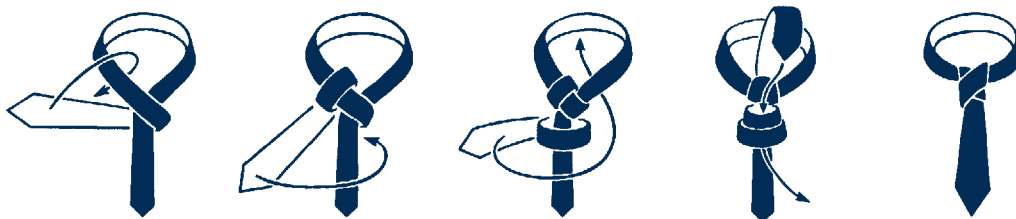
## DEMI-WINDSOR

THIS KNOT IS SIMILAR TO THE WINDSOR, BUT ONE TYING STEP IS OMITTED, GIVING IT A SLIGHTLY LESS CONICAL APPEARANCE THAN THE FULL WINDSOR. IT SHOULD IDEALLY BE MADE WITH A WIDE TIE IN CONJUNCTION WITH A WING-COLLAR.



## CROSSED KNOT

THIS KNOT IS SUITABLE FOR CLASSICAL OR POINTED COLLARS AND SHOULD BE MADE WITH A THIN TIE. IT IS A SOMEWHAT UNUSUAL AND RATHER STYLISH KNOT.



## ADVICE ON CARE

DO NOT TIGHTEN YOUR KNOT TOO HARD: SILK FIBRES COULD BE DAMAGED. PLEASE UNDO YOUR KNOT AFTER EACH USE. IF YOUR TIE IS CRUMPLED, HANG IT FROM THE SHORT TAIL AND IT WILL NATURALLY RECOVER ITS INITIAL AND IDEAL SHAPE; IN ANY CASE PLEASE AVOID ANY IRONING. PAY ATTENTION TO FRAGRANCES ON THE SILK; THESE PRODUCTS CONTAIN ALCOHOL THAT MIGHT DAMAGE THE COLOURS OF YOUR TIE.