

*Chopard*



# Writing Instruments

## Roller “ Il Classico ”



A

B

C

D

SIZE: 14,6 CM

	BODY COLOUR	CAP COLOUR	TRIMS COLOUR
REFERENCES: A 95/8093	PALLADIUM LIGNE	PALLADIUM LIGNE	PALLADIUM
B 95/8092	WHITE RESIN WITH RED HEARTS ON RING AND TOP	WHITE RESIN	YELLOW GOLD
C 95/8089	PALLADIUM GRAIN D'ORGE	PALLADIUM GRAIN D'ORGE	PALLADIUM
D 95/8088	YELLOW GOLD GRAIN D'ORGE	YELLOW GOLD GRAIN D'ORGE	YELLOW GOLD

# Writing Instruments

## Roller “ Il Classico ”



A B C/D E F/G H I J K L M N

SIZE: 14,6 CM

REFERENCES:		BODY COLOUR	CAP COLOUR	TRIMS COLOUR
A	95/8030	PINK RUBBER	PINK RESIN	ROSE GOLD COLOUR
B	95/8031	BLACK RUBBER	PALLADIUM	PALLADIUM COLOUR
C	95/8033	PALLADIUM	PALLADIUM	PALLADIUM COLOUR
D	95/8044	PALLADIUM	BLACK RESIN	PALLADIUM COLOUR
E	95/8034	PINK RESIN	PINK RESIN	ROSE GOLD COLOUR
F	95/8036	BLACK RESIN	BLACK RESIN	PALLADIUM COLOUR
G	95/8043	BLACK RESIN	PALLADIUM	PALLADIUM COLOUR
H	95/8037	BLACK RESIN	BLACK RESIN	YELLOW GOLD COLOUR
I	95/8041	PINK RUBBER	PALLADIUM	PALLADIUM COLOUR
J	95/8050	ROSE GOLD	PINK RESIN	ROSE GOLD COLOUR
K	95/8054	CLARET RESIN	CLARET RESIN	YELLOW GOLD COLOUR
L	95/8067	CLARET RESIN	CLARET RESIN	PALLADIUM COLOUR
M	95/8015	BLACK RUBBER	BLACK RESIN	YELLOW GOLD COLOUR
N	95/8016	BLACK RUBBER	BLACK RESIN	PALLADIUM COLOUR

AVAILABLE IN DIAMONDS SET CLIP WITH 85 DIAMONDS (0.80 CT)

# *Writing Instruments*

## *Fountain Pen “ Il Classico ”*



A

B

C

SIZE: 14,6 CM

		BODY COLOUR	CAP COLOUR	TRIMS COLOUR	
REFERENCES:	A	95/8095	PALLADIUM LIGNE	PALLADIUM LIGNE	PALLADIUM
	B	95/8090	YELLOW GOLD GRAIN D'ORGE	YELLOW GOLD GRAIN D'ORGE	YELLOW GOLD
	C	95/8091	PALLADIUM GRAIN D'ORGE	PALLADIUM GRAIN D'ORGE	PALLADIUM

# *Writing Instruments*

## *Fountain Pen “ Il Classico ”*



A    B/C    D/E    F    G    H    I    J    K    L    M    N

SIZE: 14,6 CM

REFERENCES:	BODY COLOUR	CAP COLOUR	TRIMS COLOUR
A 95/8032	BLACK RUBBER	PALLADIUM	PALLADIUM COLOUR
B 95/8035	PALLADIUM	PALLADIUM	PALLADIUM COLOUR
C 95/8052	PALLADIUM	BLACK RESIN	PALLADIUM COLOUR
D 95/8038	BLACK RESIN	BLACK RESIN	PALLADIUM COLOUR
E 95/8051	BLACK RESIN	PALLADIUM	PALLADIUM COLOUR
F 95/8039	BLACK RESIN	BLACK RESIN	YELLOW GOLD COLOUR
G 95/8040	PINK RUBBER	PALLADIUM	PALLADIUM COLOUR
H 95/8042	PINK RUBBER	PINK RESIN	ROSE GOLD COLOUR
I 95/8053	ROSE GOLD	PINK RESIN	ROSE GOLD COLOUR
J 95/8055	CLARET RESIN	CLARET RESIN	YELLOW GOLD COLOUR
K 95/8068	CLARET RESIN	CLARET RESIN	PALLADIUM COLOUR
L 95/8069	PINK RESIN	PINK RESIN	ROSE GOLD COLOUR
M 95/8010	BLACK RUBBER	BLACK RESIN	YELLOW GOLD COLOUR
N 95/8011	BLACK RUBBER	BLACK RESIN	PALLADIUM COLOUR

AVAILABLE IN DIAMONDS SET CLIP WITH 85 DIAMONDS (0.80 CT)

# *Writing Instruments*

## *Ball Point Pen “ Il Classico ”*



A

B

C

D

E

F

SIZE: 14,4 CM

REFERENCES:		BODY COLOUR	CAP COLOUR	TRIMS COLOUR
A	95/8000	BLACK RUBBER	-	YELLOW GOLD
B	95/8001	BLACK RUBBER	-	PALLADIUM
C	95/8002	PALLADIUM	-	PALLADIUM
D	95/8003	YELLOW GOLD	-	YELLOW GOLD
E	95/8056	RED RUBBER	-	PALLADIUM
F	95/8065	RED RUBBER	-	YELLOW GOLD

AVAILABLE IN DIAMONDS SET CLIP WITH 85 DIAMONDS (0,80CT)

# *Writing Instruments*

## *Ball Point Pen “Allegro”*



A

B

C

D

E

F

SIZE: 14 CM

		BODY COLOUR	CAP COLOUR	TRIMS COLOUR
REFERENCES:	A 95/8100	BLACK RESIN	-	PALLADIUM
	B 95/8101	BLACK RESIN	-	YELLOW GOLD
	C 95/8102	PINK RESIN	-	PINK GOLD
	D 95/8103	RED RESIN	-	YELLOW GOLD
	E 95/8104	PALLADIUM LIGNE & BLACK RESIN	-	PALLADIUM
	F 95/8105	WHITE RESIN WITH RED HEARTS ON RING AND TOP	-	YELLOWGOLD

# *Writing Instruments*

## *Ball Point Pen “Andante”*



A

B

C

D

E

SIZE: 10,5 CM

REFERENCES:	BODY COLOUR	CAP COLOUR	TRIMS COLOUR
A 95/8107	BLACK RESIN	-	PALLADIUM
B 95/8108	BLACK RESIN	-	YELLOW GOLD
C 95/8109	PINK RESIN	-	PINK GOLD
D 95/8110	WHITE RESIN	-	YELLOW GOLD
E 95/8111	RED RESIN	-	YELLOW GOLD



# *Writing Instruments*

## *Ball Point Pen “Vivace”*



A

B

C

D

E

F

G

WITHOUT CLIP - SIZE: 9,6 CM

REFERENCES:	BODY COLOUR	CAP COLOUR	TRIMS COLOUR
A 95/8117	PALLADIUM	-	PALLADIUM
B 95/8118	YELLOW GOLD	-	YELLOW GOLD
C 95/8124	BLACK RESIN	-	YELLOW GOLD
D 95/8125	BLACK RESIN	-	PALLADIUM
E 95/8126	PINK RESIN	-	PINK GOLD
F 95/8127	WHITE RESIN	-	YELLOW GOLD
G 95/8128	RED RESIN	-	YELLOW GOLD

# Writing Instruments

## “Diamonds”



### “ALLEGRO”

REFERENCES:	A	95/8119	PINK RESIN & PINK GOLD COLOUR TRIMS
	B	95/8120	PALLADIUM LIGNE & BLACK RESIN & PALLADIUM COLOUR TRIMS

### “ANDANTE”

REFERENCES:	C	95/8121	PINK RESIN & PINK GOLD COLOUR TRIMS
	D	95/8122	BLACK RESIN & PALLADIUM COLOUR TRIMS
	E	95/8123	WHITE RESIN & YELLOW GOLD COLOUR TRIMS

### CHOPARD WITH MOVING LETTER “ C ” (6 BRILLANTS 0,015 CT FC)

REFERENCE:	F	95/8200	ROLLER PALLADIUM BODY BLACK RESIN CAP PALLADIUM COLOUR TRIMS
------------	---	---------	---

# *Writing Instruments*

## *“ Haute Joaillerie ”*



SIZE: 14,6 CM

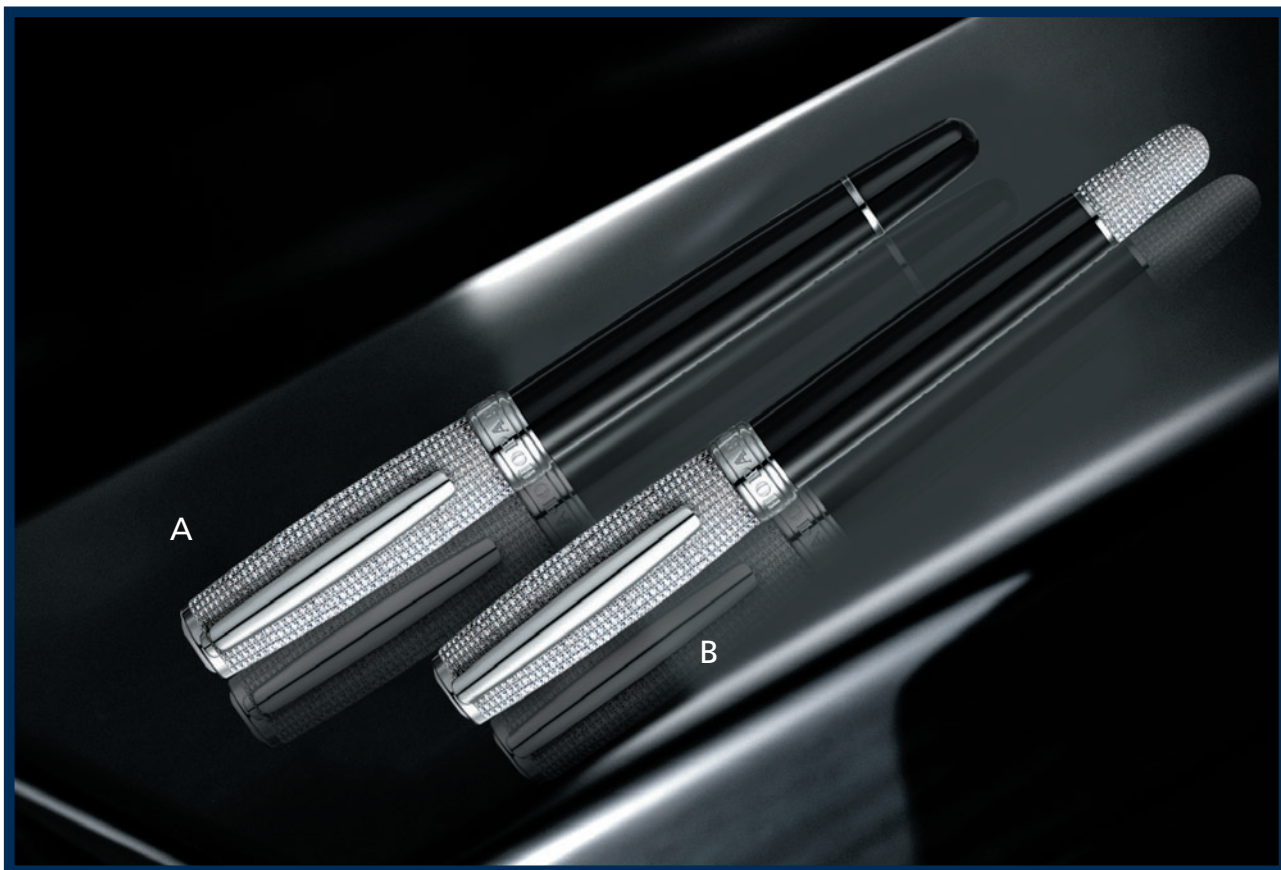
REFERENCE: 95/8045

BODY & CAP & END BODY SET, 3391 DIAMONDS, 21,63 CT FC

AVAILABLE ALSO IN YELLOW GOLD COLOUR AS FOUNTAIN PEN

# Writing Instruments

## “Haute Joaillerie”



SIZE: 14,6 CM

REFERENCES: A 95/8047 CAP SET, 1108 DIAMONDS, 10,71 CT FC  
B 95/8046 CAP & END BODY SET, 1823 DIAMONDS, 13,04 CT FC

AVAILABLE ALSO IN YELLOW GOLD COLOUR  
AS ROLLER OR FOUNTAIN PEN

# *Writing Instruments*

## *Fountain Pen “Capless”*



SIZE: 9,8 CM

REFERENCES:		DESCRIPTION	COLOUR	BODY COLOUR	TRIMS COLOUR
A	95/8057	CLUB		PALLADIUM	-
B	95/8058	CLUB		YELLOW GOLD	-
C	95/8059	CAPLESS CUBE		PALLADIUM	-
D	95/8060	CAPLESS CUBE		YELLOW GOLD	-
E	95/8061	SECURITY CAPLESS		BLACK RESIN	PALLADIUM COLOUR
F	95/8062	SECURITY CAPLESS		BLACK RESIN	YELLOW GOLD COLOUR

# Writing Instruments

## Refills



REFERENCES: 95/8028	2 REFILLS BALL POINT PEN MEDIUM IN BLUE
95/8029	2 REFILLS ROLLER MEDIUM IN BLUE
95/8070	2 REFILLS ROLLER MEDIUM IN BLACK
95/8071	2 REFILLS BALL POINT PEN MEDIUM IN BLACK
95/8094	4 INK CARTRIDGES IN BLUE
95/8129	2 REFILLS BALL POINT PEN FOR MODELS ANDANTE OR VIVACE IN BLUE

# *Writing Instruments*

## *Pen Holders*



REFERENCES: A 95/7512 HOLDER FOR 2 PENS IN PINK LEATHER

B 95/7514 HOLDER FOR 2 PENS IN BLACK LEATHER

MATERIALS: LEATHER

# Writing Instruments

## Set Racing



REFERENCES: 95/8063

ROLLER

SET RACING 5 ROLLER NUMBERED (0-199)  
RED, YELLOW, GREEN, BLUE, BLACK

95/8064

FOUNTAIN PEN

SET RACING 5 FOUNTAIN PENS NUMBERED (0-49)  
RED, YELLOW, GREEN, BLUE, BLACK

CAN BE DELIVERED UNTIL STOCK RUNS OUT



# *Leather - Men Collection*

## *Wallet “ Il Classico ”*



- REFERENCES:
- A 95/7110 SMALL WALLET (11,5X9,5CM)  
8 CREDIT CARD COMPARTMENTS AND 1 SUBDIVISION ON THE LEFT SIDE AND ON THE RIGHT SIDE - 2 SUBDIVISIONS FOR PAPER MONEY
  - B 95/7111 MEDIUM WALLET (9,5X12,6CM)  
9 CREDIT CARD COMPARTMENTS AND 3 SUBDIVISIONS ON THE LEFT SIDE  
1 COMPARTMENT FOR COINS ON THE RIGHT SIDE AND 2 SUBDIVISIONS FOR PAPER MONEY
  - C 95/7112 LARGE WALLET (12,2X9,7CM)  
8 CREDIT CARD COMPARTMENTS AND 4 SUBDIVISIONS ON THE LEFT SIDE  
1 COMPARTMENT FOR COINS AND 1 SUBDIVISION ON THE RIGHT SIDE AND 2 SUBDIVISIONS FOR PAPER MONEY
  - D 95/7113 PORTE YEN WALLET (9X18,5CM)  
6 CREDIT CARD COMPARTMENTS AND 2 SUBDIVISIONS ON THE LEFT SIDE  
6 CREDIT CARD COMPARTMENTS AND 2 SUBDIVISIONS ON THE RIGHT SIDE

MATERIALS: CALF SKIN LEATHER, MADE IN ITALY

# Leather - Men Collection



REFERENCES:	A	95/7120	LAPTOP HOLDER RACING BLACK (39X29X6CM)
	B	95/7121	LEATHER BRIEFCASE BLACK RACING (47X28X19CM) HANDLE, FLAP WITH 2 PIECES LOGO CLOSURE 2 SUBDIVISIONS AND 2 INSIDE COMPARTMENTS WITH ZIPPER CLOSURE INSIDE OF BAG AND 2 POCKETS IN THE FRONT
	C	95/7098	LEATHER BRIEFCASE BLACK FILO ROSSO (40,5X33X16CM) HANDLE, FLAP WITH 2 PIECES LOGO CLOSURE 3 SUBDIVISIONS AND 2 INSIDE COMPARTMENTS WITH ZIPPER CLOSURE INSIDE OF BAG

MATERIALS: CALF SKIN LEATHER, MADE IN ITALY

# Leather - Racing Collection



- REFERENCES:
- A 95/7035 SMALL WALLET (11,5X9,5CM)  
8 CREDIT CARD COMPARTMENTS AND 1 SUBDIVISION ON THE LEFT SIDE AND ON THE RIGHT SIDE - 2 SUBDIVISIONS FOR PAPER MONEY
  - B 95/7036 MEDIUM WALLET (9,5X12,6CM)  
9 CREDIT CARD COMPARTMENTS AND 3 SUBDIVISIONS ON THE LEFT SIDE  
1 COMPARTMENT FOR COINS ON THE RIGHT SIDE AND 2 SUBDIVISIONS FOR PAPER MONEY
  - C 95/7037 LARGE WALLET (12,2X9,7CM)  
8 CREDIT CARD COMPARTMENTS AND 4 SUBDIVISIONS ON THE LEFT SIDE  
1 COMPARTMENT FOR COINS AND 1 SUBDIVISION ON THE RIGHT SIDE AND 2 SUBDIVISIONS FOR PAPER MONEY
  - D 95/7038 PORTE YEN WALLET (9X18,5CM)  
6 CREDIT CARD COMPARTMENTS AND 2 SUBDIVISIONS ON THE LEFT SIDE  
6 CREDIT CARD COMPARTMENTS AND 2 SUBDIVISIONS ON THE RIGHT SIDE
  - E 95/7039 TRAVEL DOCUMENT CASE (11,5X22CM)  
8 CREDIT CARD COMPARTMENTS AND 2 SUBDIVISIONS ON THE LEFT SIDE  
4 SUBDIVISIONS ON THE RIGHT SIDE
  - F 95/7040 LEATHER BRIEFCASE RACING (40,5X33X16CM)  
HANDLE, FLAP WITH 2 PIECES LOGO CLOSURE  
3 SUBDIVISIONS AND 2 INSIDE COMPARTMENTS WITH ZIPPER CLOSURE INSIDE OF BAG
  - G 95/7041 FOLDER A4 (21,5X31,5CM)  
4 SUBDIVISIONS ON THE LEFT SIDE AND 1 SUBDIVISION FOR PAD ON THE RIGHT SIDE
  - H 95/7046 FOLDER A5 (14,8 X 21CM)

MATERIALS: CALF SKIN LEATHER, MADE IN ITALY

# Leather - Racing Collection



- REFERENCES: A 95/7052 LEATHER BRIEFCASE RACING NATURAL (43X36X16CM)  
HANDLE, FLAP WITH 2 PIECES LOGO CLOSURE. 3 SUBDIVISIONS  
AND 2 INSIDE COMPARTMENTS WITH ZIPPER CLOSURE INSIDE OF BAG
- B 95/7053 DIARY BLACK FILO ROSSO (25,5X20X3CM)
- C 95/7054 DIARY BLACK RACING (25,5X20X3CM)
- D 95/7055 BUSINESS CARD HOLDER BLACK FILO ROSSO (25X12X2CM)
- E 95/7056 BUSINESS CARD HOLDER BLACK RACING (25X12X2CM)
- F 95/7047 CREDIT CARD HOLDER RACING (11,2X9,6X1,7CM)

MATERIALS: CALF SKIN LEATHER, MADE IN ITALY

# *Leather - Racing Collection*



REFERENCE: 95/7048 BAGAGE WEEK-END RACING BLACK (52X50X23CM)

MATERIALS: VERY VERY SPECIAL STAG LEATHER, WITH A BLACK RUBBER STRAP, MADE IN ITALY

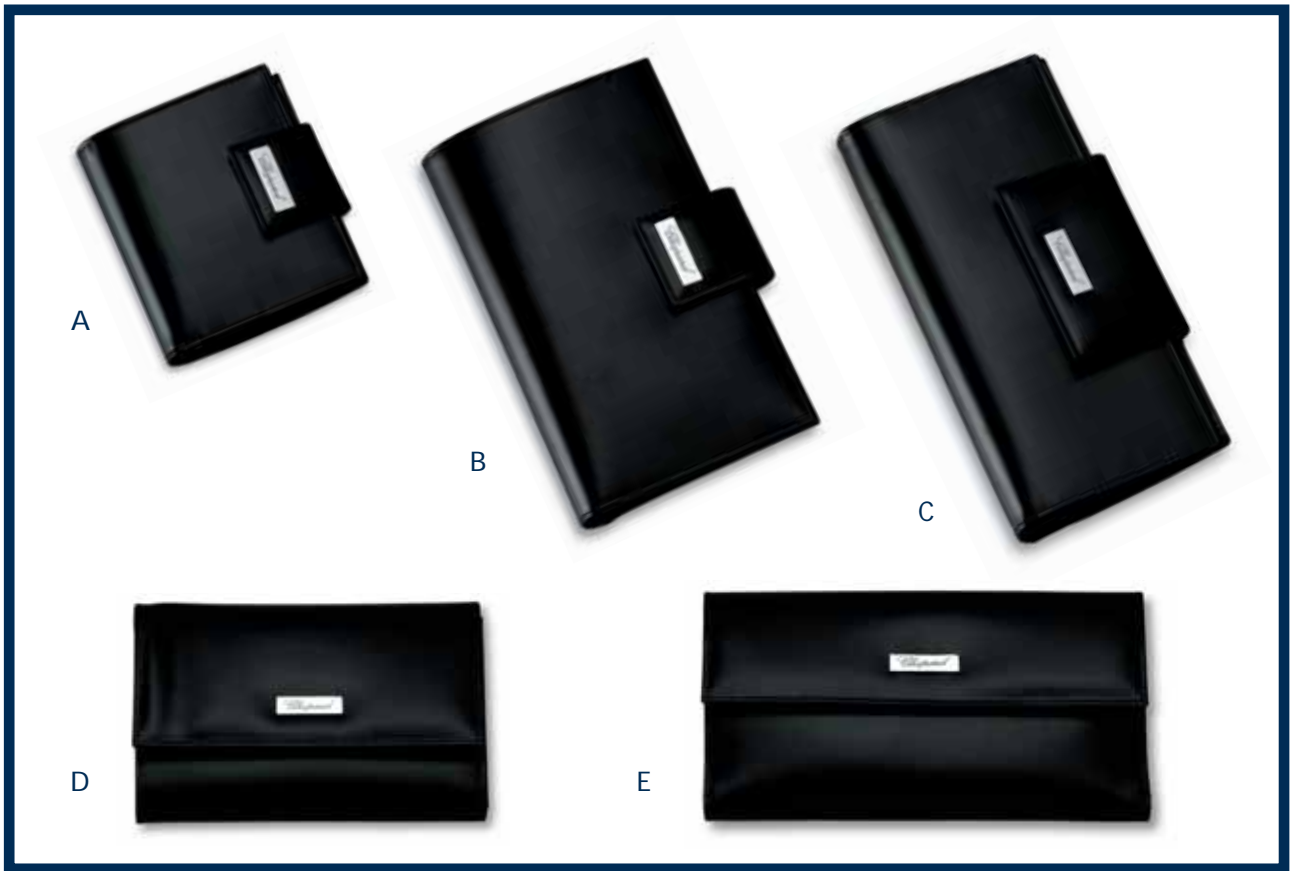
# Leather Collection in Pink



- REFERENCES: A 95/7500 SMALL VERTICAL LEATHER WALLET PINK (10X8X2CM)  
3 CREDIT CARD COMPARTMENTS ON THE LEFT SIDE AND 1 COMPARTMENT FOR COINS ON THE RIGHT SIDE AND 1 SUBDIVISION FOR PAPER MONEY
- B 95/7502 MEDIUM VERTICAL LEATHER WALLET PINK (11X17,5X2CM)  
8 CREDIT CARD COMPARTMENTS ON THE LEFT SIDE AND 1 COMPARTMENT FOR COINS ON THE RIGHT SIDE AND 1 SUBDIVISION FOR PAPER MONEY
- C 95/7504 LARGE VERTICAL LEATHER WALLET PINK (13X10X1,5CM)  
3 FOLDS WALLET, 14 CREDIT CARD COMPARTMENTS, 5 SUBDIVISIONS AND 1 COMPARTMENT FOR COINS
- D 95/7506 MEDIUM HORIZONTAL LEATHER WALLET PINK (16X11X3CM)  
7 CREDIT CARD COMPARTMENTS AND 3 LARGE COMPARTMENTS ON THE LEFT SIDE, 1 COMPARTMENT FOR COINS AND 2 LARGE COMPARTMENTS IN THE MIDDLE AND 1 SUBDIVISION FOR PAPER MONEY
- E 95/7508 LARGE HORIZONTAL LEATHER WALLET PINK (19X11X3CM)  
FRONT: 1 LARGE COMPARTMENT FOR COINS  
BACK: 6 CREDIT CARD COMPARTMENTS AND 1 LARGE COMPARTMENT ON THE LEFT SIDE, 2 LARGES COMPARTMENTS ON THE RIGHT SIDE

MATERIALS: CALF SKIN LEATHER, MADE IN ITALY

# *Leather Collection in Black*



- REFERENCES: A 95/7501 SMALL VERTICAL LEATHER WALLET BLACK (10X8X2CM)  
3 CREDIT CARD COMPARTMENTS ON THE LEFT SIDE AND 1 COMPARTMENT FOR COINS ON THE RIGHT SIDE AND 1 SUBDIVISION FOR PAPER MONEY
- B 95/7503 MEDIUM VERTICAL LEATHER WALLET BLACK (11X17,5X2CM)  
8 CREDIT CARD COMPARTMENTS ON THE LEFT SIDE AND 1 COMPARTMENT FOR COINS ON THE RIGHT SIDE AND 1 SUBDIVISION FOR PAPER MONEY
- C 95/7505 LARGE VERTICAL LEATHER WALLET BLACK (13X10X1,5CM)  
3 FOLDS WALLET, 14 CREDIT CARD COMPARTMENTS, 5 SUBDIVISIONS AND 1 COMPARTMENT FOR COINS
- D 95/7507 MEDIUM HORIZONTAL LEATHER WALLET BLACK (16X11X3CM)  
7 CREDIT CARD COMPARTMENTS AND 3 LARGE COMPARTMENTS ON THE LEFT SIDE, 1 COMPARTMENT FOR COINS AND 2 LARGE COMPARTMENTS IN THE MIDDLE AND 1 SUBDIVISION FOR PAPER MONEY
- E 95/7509 LARGE HORIZONTAL LEATHER WALLET BLACK (19X11X3CM)  
FRONT: 1 LARGE COMPARTMENT FOR COINS  
BACK: 6 CREDIT CARD COMPARTMENTS AND 1 LARGE COMPARTMENT ON THE LEFT SIDE, 2 LARGES COMPARTMENTS ON THE RIGHT SIDE

MATERIALS: CALF SKIN LEATHER, MADE IN ITALY

# Grey Jeans Collection



REFERENCES: A	95/7100	SMALL ROUND TRAVEL BAG (31X22X18.5CM)
B	95/7102	MEDIUM ROUND TRAVEL BAG (50X30X24CM)
C	95/7104	LARGE ROUND TRAVEL BAG (60X35X30CM)
D	95/7106	CITY BAG WITH POCKETS (36X25X14CM)
E	95/7108	ROUND BAG WITH POCKETS (33X22X18CM)

MATERIALS: GREY JEANS, RED LEATHER CROCO PRINTED, MADE IN ITALY



# *Blue Jeans Collection*



REFERENCES: A	95/7099	SMALL ROUND TRAVEL BAG (31X22X18.5CM)
B	95/7101	MEDIUM ROUND TRAVEL BAG (50X30X24CM)
C	95/7103	LARGE ROUND TRAVEL BAG (60X35X30CM)
D	95/7105	CITY BAG WITH POCKETS (36X25X14CM)
E	95/7107	ROUND BAG WITH POCKETS (33X22X18CM)

MATERIALS: BLUE JEANS, RED LEATHER CROCO PRINTED, MADE IN ITALY

# Happy Fish Bags



REFERENCES: 95/7079 NAVY BLUE/WHITE

95/7080 PINK/WHITE

95/7081 SKY BLUE/WHITE

95/7082 COGNAC/CREAM

MATERIALS: 100 % CALF SKIN LEATHER, MADE IN ITALY

DIMENSIONS: 40X45X17CM

CAN BE DELIVERED UNTIL STOCK RUNS OUT

# Ladies Diaries



REFERENCES:	A	95/7058	SMALL DIARY PINK (14X11,5X3,5CM) 4 VISIT CARD COMPARTMENTS AND 2 SUBDIVISIONS ON THE LEFT SIDE
	B	95/7059	SMALL DIARY SKY BLUE (14X11,5X3,5CM) 4 VISIT CARD COMPARTMENTS AND 2 SUBDIVISIONS ON THE LEFT SIDE
	C	95/7060	SMALL DIARY CLARET (14X11,5X3,5CM) 4 VISIT CARD COMPARTMENTS AND 2 SUBDIVISIONS ON THE LEFT SIDE
	D	95/7061	MEDIUM DIARY PINK (22X17X3,5CM) 5 VISIT CARD COMPARTMENTS AND 3 SUBDIVISIONS ON THE LEFT SIDE
	E	95/7062	MEDIUM DIARY SKY BLUE (22X17X3,5CM) 5 VISIT CARD COMPARTMENTS AND 3 SUBDIVISIONS ON THE LEFT SIDE
	F	95/7063	MEDIUM DIARY CLARET (22X17X3,5 CM) 5 VISIT CARD COMPARTMENTS AND 3 SUBDIVISIONS ON THE LEFT SIDE
	G	95/7064	LARGE DIARY PINK (25,5X21X4CM) 2 VISIT CARD COMPARTMENTS AND 1 SUBDIVISION ON THE LEFT SIDE
	H	95/7065	LARGE DIARY SKY BLUE (25,5X21X4CM) 2 VISIT CARD COMPARTMENTS AND 1 SUBDIVISION ON THE LEFT SIDE
	I	95/7066	LARGE DIARY CLARET (25,5X21X4CM) 2 VISIT CARD COMPARTMENTS AND 1 SUBDIVISION ON THE LEFT SIDE

MATERIALS: CALF SKIN LEATHER, MADE IN ITALY

COLOUR: PINK, SKY BLUE, CLARET

# Wallets



- REFERENCES:
- |   |          |   |
|---|----------|---|
| A | 95/7067* | SMALL LEATHER WALLET PINK (10X8X2CM)<br>3 CREDIT CARD COMPARTMENTS ON THE LEFT SIDE AND 1 COMPARTMENT FOR COINS ON THE RIGHT SIDE AND 1 SUBDIVISION FOR PAPER MONEY         |
| B | 95/7068  | SMALL LEATHER WALLET SKY BLUE (10X8X2CM)<br>3 CREDIT CARD COMPARTMENTS ON THE LEFT SIDE AND 1 COMPARTMENT FOR COINS ON THE RIGHT SIDE AND 1 SUBDIVISION FOR PAPER MONEY     |
| C | 95/7069  | SMALL LEATHER WALLET CLARET (10X8X2CM)<br>3 CREDIT CARD COMPARTMENTS ON THE LEFT SIDE AND 1 COMPARTMENT FOR COINS ON THE RIGHT SIDE AND 1 SUBDIVISION FOR PAPER MONEY       |
| D | 95/7070* | MEDIUM LEATHER WALLET PINK (11X17,5X2CM)<br>8 CREDIT CARD COMPARTMENTS ON THE LEFT SIDE AND 1 COMPARTMENT FOR COINS ON THE RIGHT SIDE AND 1 SUBDIVISION FOR PAPER MONEY     |
| E | 95/7071  | MEDIUM LEATHER WALLET SKY BLUE (11X17,5X2CM)<br>8 CREDIT CARD COMPARTMENTS ON THE LEFT SIDE AND 1 COMPARTMENT FOR COINS ON THE RIGHT SIDE AND 1 SUBDIVISION FOR PAPER MONEY |
| F | 95/7072  | MEDIUM LEATHER WALLET CLARET (11X17,5X2CM)<br>8 CREDIT CARD COMPARTMENTS ON THE LEFT SIDE AND 1 COMPARTMENT FOR COINS ON THE RIGHT SIDE AND 1 SUBDIVISION FOR PAPER MONEY   |
| G | 95/7073* | LARGE LEATHER WALLET PINK (13X10X1,5CM)<br>3 FOLDS WALLET, 14 CREDIT CARD COMPARTMENTS, 2 SUBDIVISIONS FOR PAPER MONEY AND 1 COMPARTMENT FOR COINS                          |
| H | 95/7074  | LARGE LEATHER WALLET SKY BLUE (13X10X1,5CM)<br>3 FOLDS WALLET, 14 CREDIT CARD COMPARTMENTS, 2 SUBDIVISIONS FOR PAPER MONEY AND 1 COMPARTMENT FOR COINS                      |
| I | 95/7075  | LARGE LEATHER WALLET CLARET (13X10X1,5CM)<br>3 FOLDS WALLET, 14 CREDIT CARD COMPARTMENTS, 2 SUBDIVISIONS FOR PAPER MONEY AND 1 COMPARTMENT FOR COINS                        |

MATERIALS: CALF SKIN LEATHER, MADE IN ITALY  
COLOUR: PINK, SKY BLUE, CLARET

\*UPON STOCK AVAILABILITY

# Ladies Leather Accessories



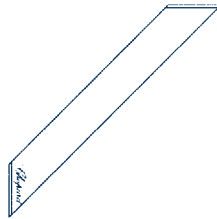
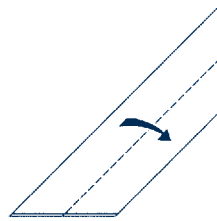
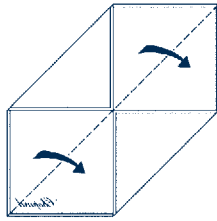
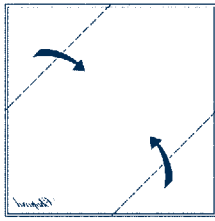
- REFERENCES: A 95/7078 A4 FOLDER CLARET (32X22,5X1,5CM)  
B 95/7076 A4 FOLDER PINK (32X22,5X1,5CM)  
C 95/7077 A4 FOLDER SKY BLUE (32X22,5X1,5CM)  
D 95/7083 LAPTOP HOLDER PINK (34X29X6CM)  
E 95/7084 LAPTOP HOLDER SKY BLUE (34X29X6CM)  
F 95/7085 LAPTOP HOLDER CLARET (34X29X6CM)

MATERIALS: CALF SKIN LEATHER,MADE IN ITALY

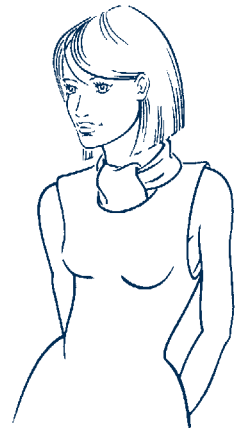
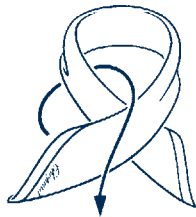
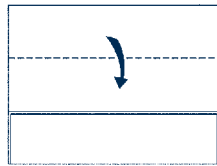
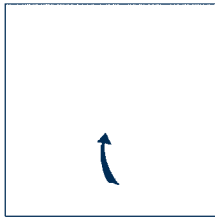
COLOUR: PINK, SKY BLUE, CLARET

# The art of knotting a scarf

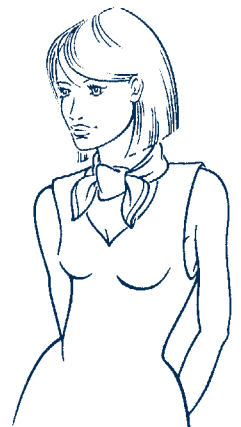
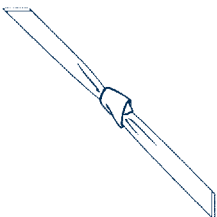
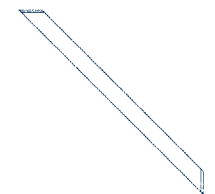
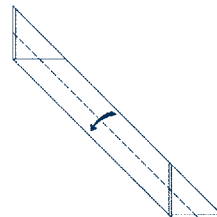
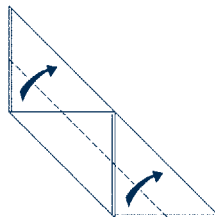
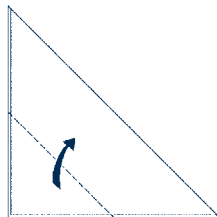
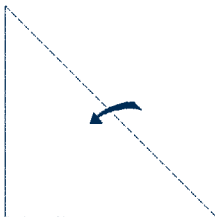
## SIMPLE KNOT



## CLASSIC KNOT



## BUTTERFLY KNOT

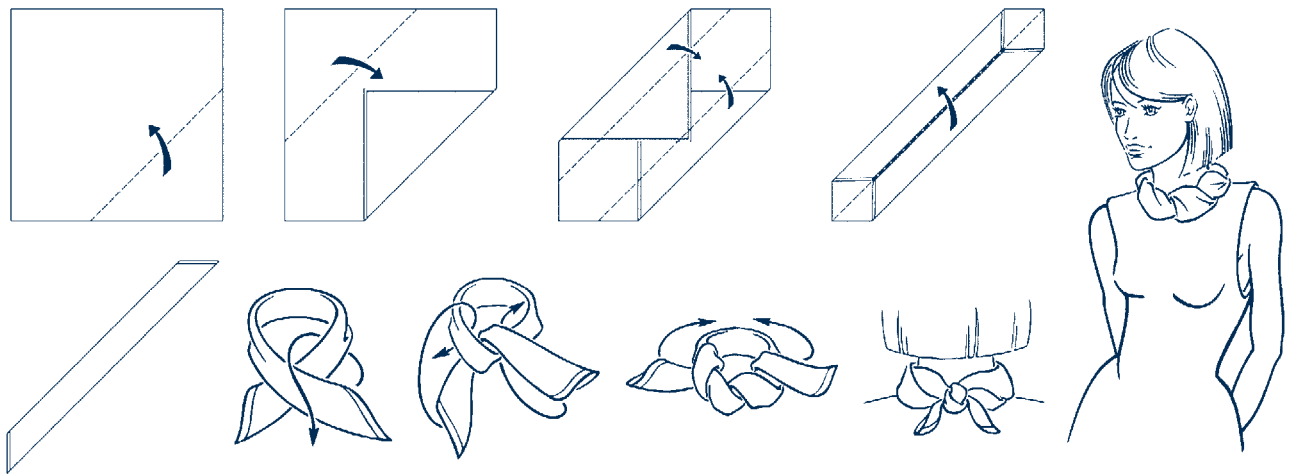


## ADVICE ON CARE

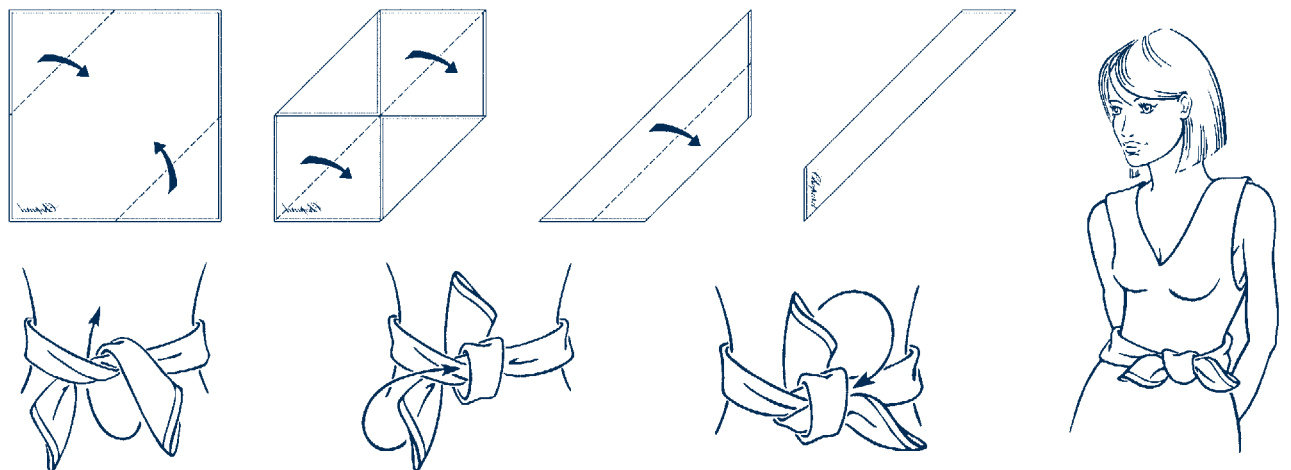
WE SUGGEST THAT YOU UNTIE YOUR SCARF KNOT AFTER EACH USE. IF IT IS CRUMPLED YOU CAN GENTLY IRON IT UNDER A LUKE WARM HEAT AND IT WILL NATURALLY RECOVER ITS SHAPE. BE CAREFUL WITH FRAGRANCES ON THE SILK, THESE PRODUCTS CONTAIN ALCOHOL THAT CAN DAMAGE THE COLOURS. FINALLY WE HIGHLY RECOMMEND THAT YOU SEND YOUR SCARF TO THE DRY CLEANERS.

# The art of knotting a scarf

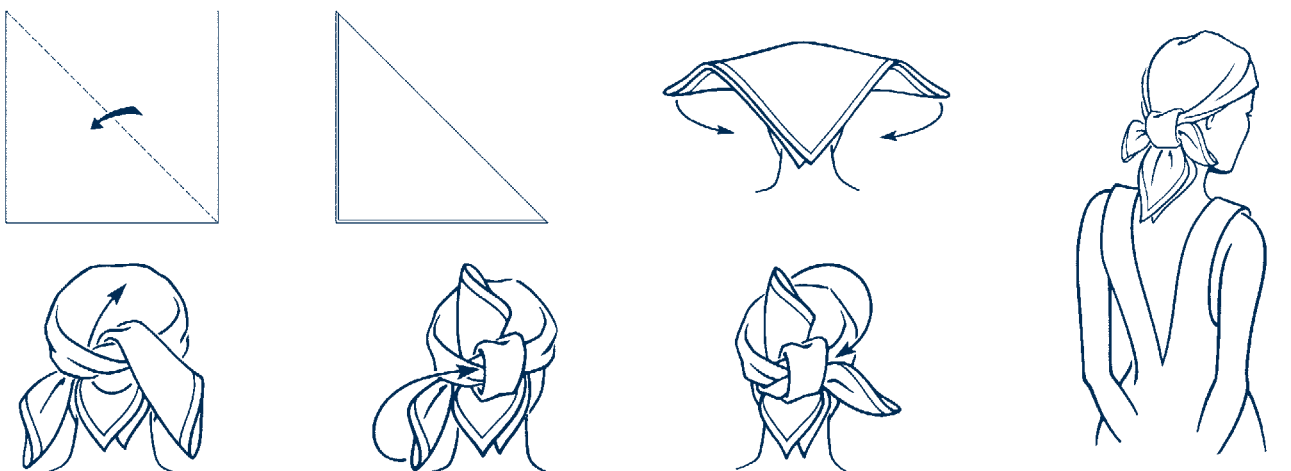
## NECKLACE KNOT



## WAISTBAND KNOT



## HAT KNOT



## ADVICE ON CARE

WE SUGGEST THAT YOU UNTIE YOUR SCARF KNOT AFTER EACH USE. IF IT IS CRUMPLED YOU CAN GENTLY IRON IT UNDER A LUKE WARM HEAT AND IT WILL NATURALLY RECOVER ITS SHAPE. BE CAREFUL WITH FRAGRANCES ON THE SILK, THESE PRODUCTS CONTAIN ALCOHOL THAT CAN DAMAGE THE COLOURS. FINALLY WE HIGHLY RECOMMEND THAT YOU SEND YOUR SCARF TO THE DRY CLEANERS.

# Happy Snow



## HAPPY SNOW SCARVES 50X50 CM

REFERENCES:	95/1203281/5	BEIGE / CORAL
	95/1203281/1	SKY BLUE / WHITE
	95/1203281/2	FUCHSIA / RED
	95/1203281/11	TURQUOISE / YELLOW

MATERIALS: 100% TWILL SILK, MADE IN ITALY





# Logo



## LOGO SCARVES 50X50 CM

REFERENCES:	95/5420/7	WHITE / RED
	95/5420/78	IVORY / LILAC
	95/5420/79	IVORY / PINK
	95/5420/3	APPLE / SKY BLUE
	95/5420/9	PINK / FUCHSIA
	95/5420/6	PEARL / GREY

MATERIALS: 100% TWILL SILK, MADE IN ITALY



# Cashmere Shawls



## CASHMERE SHAWLS 140X140 CM

REFERENCES:	95/1204261/7	WHITE / GREY
	95/1204261/1	WHITE / BEIGE
	95/1204261/2	WHITE / RED

MATERIALS: 100% CASHMERE, MADE IN ITALY



# *Logo Double Satin*



## LOGO DOUBLE SATIN HEADSCARVES 70X210 CM

REFERENCES:	95/1207012/2	BLACK / ORANGE
	95/1207012/21	BLACK / FUCHSIA
	95/1207012/8	BLACK / VIOLET
	95/1207012/6	BLACK
	95/1207012/3	BLACK / GREEN

MATERIALS: 18% SILK, 82% VISCOSE, MADE IN ITALY



# *Double Logo Stoles*



## DOUBLE LOGO STOLES WITH FRINGE 70X180 CM

REFERENCES:	95/1205022/6	BLACK
	95/1205022/3	LIGHT GREEN
	95/1205022/1	SKY BLUE
	95/1205022/2	ORANGE
	95/1205022/21	PINK

MATERIALS: 35% SILK, 30% WOOL, 35% CASHMERE  
MADE IN ITALY



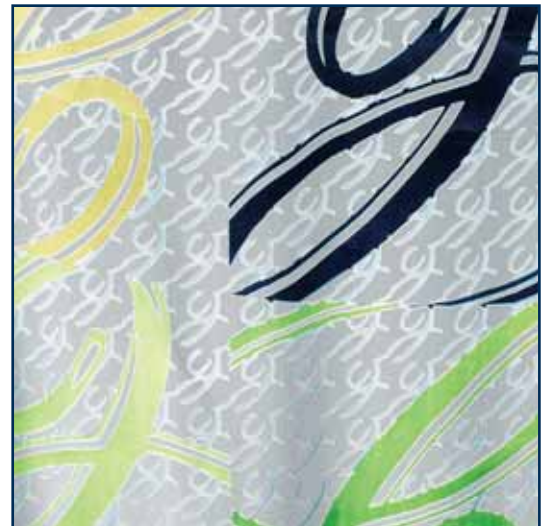
# *Logomania Dévoré*



## LOGOMANIA DEVORE STOLES 70X200 CM

REFERENCES:	95/1207011/11	BLUE
	95/1207011/1	NAVY BLUE
	95/1207011/21	FUCHSIA
	95/1207011/8	LILAC
	95/1207011/6	BLACK

MATERIALS: 100% SATIN SILK DEVORE, MADE IN ITALY



# Lifestyle



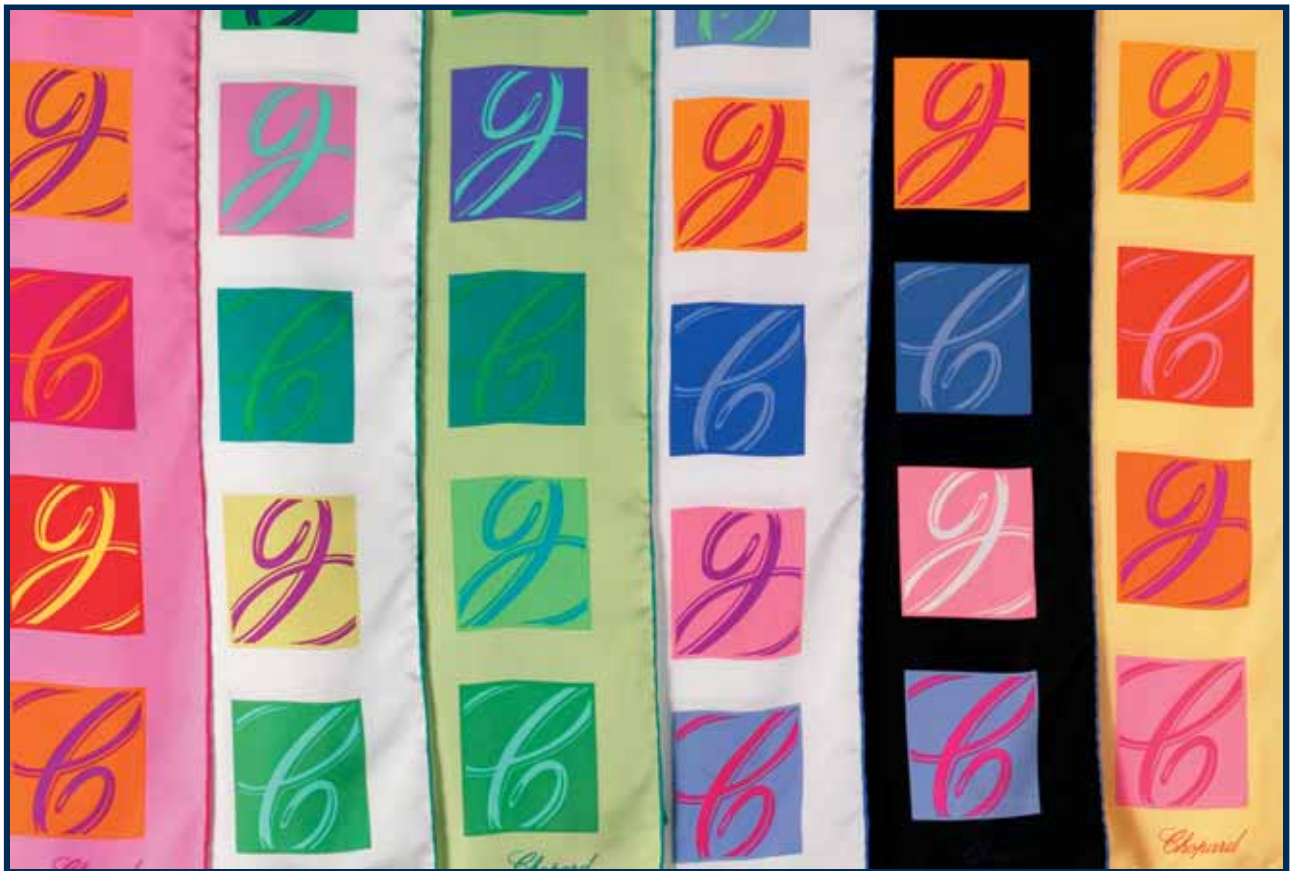
## LIFESTYLE SCARVES 90X90 CM

REFERENCES:	95/1202242/6	BLACK
	95/1202242/2	CORAL
	95/1202242/21	ORANGE
	95/1202242/8	LILAC
	95/1202242/1	SKY BLUE
	95/1202241/12	PASTEL PINK

MATERIALS: 100% TWILL SILK, MADE IN ITALY



# “ C ” Logo



## “ C ” LOGO SCARVES 90X90 CM

REFERENCES:	95/1202011/71	WHITE / SKY BLUE
	95/1202011/7	WHITE / TURQUOISE
	95/1202011/6	BLACK / ROYAL BLUE
	95/1202011/2	PINK / FUCHSIA
	95/1202011/3	APPLE / EMERALD
	95/1202011/4	LEMON / ORANGE

MATERIALS: 100% TWILL SILK, MADE IN ITALY





## GSTAAD SCARVES 90X90CM

REFERENCES:	95/1202261/1	NAVY BLUE
	95/1202261/21	RED / BEIGE
	95/1202261/11	SKY BLUE
	95/1202261/3	GREEN
	95/1202261/2	RED / WHITE

MATERIALS: 100 % TWILL SILK, MADE IN ITALY





# Logo Dévoré



## LOGO DEVORE STOLES 70X200CM

REFERENCES:	95/1205016/10	FUCHSIA
	95/1205016/4	YELLOW
	95/1205016/12	TURQUOISE
	95/1205016/15	ORANGE
	95/1205016/8	LILAC
	95/1205016/6	BLACK
	95/1205016/11	CLARET
	95/1205016/7	WHITE
	95/1205016/13	GREY
	95/1205016/1	BLUE

MATERIALS: 70% SILK, 30% VISCOSE, MADE IN ITALY



# Art Déco Taffetas



## ART DECO TAFFETAS 20X220CM

REFERENCES:	95/1205019/6	BLACK
	95/1205019/16	PLUM
	95/1205019/4	GOLD
	95/1205019/11	CLARET

MATERIALS: 100% TAFFETAS SILK, MADE IN ITALY



CAN BE DELIVERED UNTIL STOCK RUNS OUT

# *Mid-season Logomania*



## MID-SEASON LOGOMANIA STOLES 55X200CM

REFERENCES:	95/1205020/10	PINK / ORANGE
	95/1205020/7	WHITE / PERLE
	95/1205020/1	TURQUOISE / ACQUA
	95/1205020/5	WHITE / BEIGE
	95/1205020/3	APPLE GREEN / LEMON

MATERIALS: 100 % SILK, MADE IN ITALY



# *Butterflies Shawls & Headscarves*



## BUTTERFLIES SHAWLS 140X140CM

REFERENCES:	95/2432/1	GREY
	95/2432/2	BLACK
	95/2432/3	NAVY BLUE
	95/2432/4	ORANGE
	95/2432/5	BEIGE
	95/2432/6	BROWN

MATERIALS: 100% CHIFFON SILK, MADE IN ITALY

## BUTTERFLIES HEADSCARVES 200X70CM

REFERENCES:	95/2432/1-0	GREY
	95/2432/2-0	BLACK
	95/2432/3-0	NAVY BLUE
	95/2432/4-0	ORANGE
	95/2432/5-0	BEIGE
	95/2432/6-0	BROWN

MATERIALS: 100% CHIFFON SILK, MADE IN ITALY

# *Headscarves - Wild Rose*



## HEADSCARVES- WILD ROSE 70X200 CM

REFERENCES: 95/1202141/9 PASTEL PINK

95/1202141/1 TURQUOISE

95/1202141/6 BLACK

95/1202141/7 CREAM

95/1202141/5 BEIGE

MATERIALS: 100% CHIFFON SILK, MADE IN ITALY



CAN BE DELIVERED UNTIL STOCK RUNS OUT

# Evening Bags



REFERENCES: 95/9697 EVENING BAG, ROSE JACQUARD BROWN-LIGHT SALMON, GOLD-PLATED CLASP  
95/9698 EVENING BAG, ROSE JACQUARD BLACK-RED, SILVER-PLATED CLASP  
95/9699 EVENING BAG, LOGO JACQUARD BLACK-GOLD, SILVER-PLATED CLASP

MATERIALS: SILK - SOLID SILVER CLASP WITH WHITE GOLD OR YELLOW GOLD PLATING

DIMENSIONS: BAG: 26 X 10 X 4.5 CM  
BOX : 26 X 15.5 X 11 CM

CAN BE DELIVERED UNTIL STOCK RUNS OUT

# *Gentlemen Logo Stole*



## GENTLEMEN LOGO STOLES 55X200CM

REFERENCES:	95/1206171/5	DARK BROWN
	95/1206171/11	CLARET
	95/1206171/51	CAMEL
	95/1206171/6	BLACK

MATERIALS: 50% SILK, 50% CASHMIRE  
MADE IN ITALY



# The art of knotting a tie

## SIMPLE KNOT

THIS KNOT IS SUITED TO ALL TYPES OF SHIRT COLLARS AND WORKS WELL WITH MOST SILKS (TWILL SILK, JACQUARD SILK, ETC...). IT IS EASY AND QUICK TO TIE.



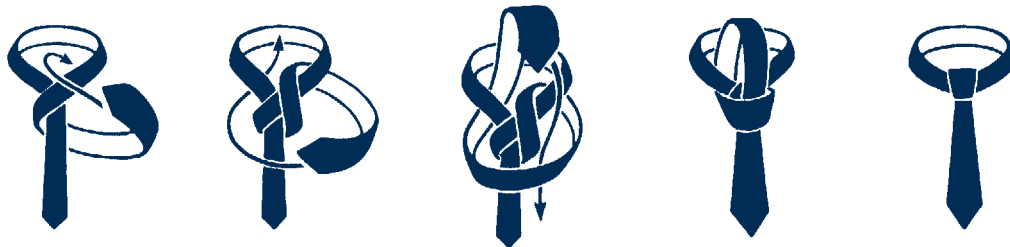
## WINDSOR

THIS KNOT PRODUCES A CONE-SHAPED LOOK AND IS PARTICULARLY WELL SUITED TO WING-COLLAR SHIRTS. IT WORKS BEST WITH A NARROW TIE AS IT IS SOMEWHAT VOLUMINOUS.



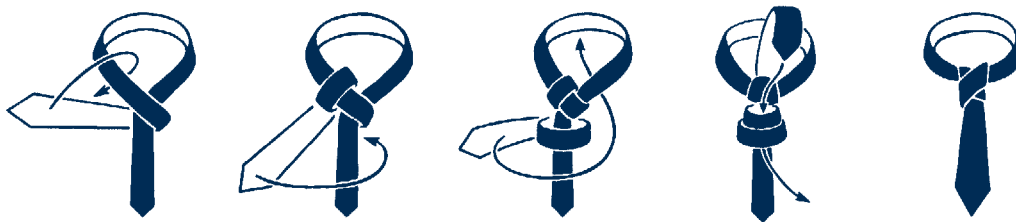
## DEMI-WINDSOR

THIS KNOT IS SIMILAR TO THE WINDSOR, BUT ONE TYING STEP IS OMITTED, GIVING IT A SLIGHTLY LESS CONICAL APPEARANCE THAN THE FULL WINDSOR. IT SHOULD IDEALLY BE MADE WITH A WIDE TIE IN CONJUNCTION WITH A WING-COLLAR.



## CROSSED KNOT

THIS KNOT IS SUITABLE FOR CLASSICAL OR POINTED COLLARS AND SHOULD BE MADE WITH A THIN TIE. IT IS A SOMEWHAT UNUSUAL AND RATHER STYLISH KNOT.



## ADVICE ON CARE

DO NOT TIGHTEN YOUR KNOT TOO HARD: SILK FIBRES COULD BE DAMAGED. PLEASE UNDO YOUR KNOT AFTER EACH USE. IF YOUR TIE IS CRUMPLED, HANG IT FROM THE SHORT TAIL AND IT WILL NATURALLY RECOVER ITS INITIAL AND IDEAL SHAPE; IN ANY CASE PLEASE AVOID ANY IRONING. PAY ATTENTION TO FRAGRANCES ON THE SILK; THESE PRODUCTS CONTAIN ALCOHOL THAT MIGHT DAMAGE THE COLOURS OF YOUR TIE.



# *Tyre*



REFERENCES : 95/1201027/1 BLUE  
95/1201027/6 GREY  
95/1201027/2 ORANGE  
95/1201027/21 PINK

MATERIALS: 100% PRINTED TWILL SILK, MADE IN ITALY

# *Gran Turismo*



REFERENCES : 95/1201027/11 BLUE  
95/1201027/12 SKY BLUE  
95/1201027/22 PINK  
95/1201027/4 YELLOW

MATERIALS: 100% PRINTED TWILL SILK, MADE IN ITALY

# Design 1



REFERENCES:	95/1201014/1	NAVY BLUE / BLUE
	95/1201014/11	NAVY BLUE / RUST
	95/1201014/5	BROWN / RUST
	95/1201014/2	CLARET
	95/1201014/3	GREEN
	95/1201014/8	VIOLET
	95/1201014/6	BLACK
	95/1201014/12	ROYAL BLUE
	95/1201014/31	ACQUA
	95/1201014/81	LILAC
	95/1201014/21	RASPBERRY
	95/1201014/9	ORANGE
	95/1201014/22	PINK
	95/1201014/13	SKY BLUE

MATERIALS: 100% JACQUARD SILK, MADE IN ITALY

## *Design 2*



REFERENCES: 95/1201020/1 NAVY BLUE / WHITE  
95/1201020/11 NAVY BLUE / SKY BLUE  
95/1201020/6 BLACK / GREY  
95/1201020/8 LILAC  
95/1201020/3 GREEN

MATERIALS: 100% JACQUARD SILK, MADE IN ITALY

# Design 3



- REFERENCES: 95/1201016/4 YELLOW  
95/1201016/9 ORANGE  
95/1201016/2 RED  
95/1201016/8 PURPLE  
95/1201016/11 ROYAL BLUE  
95/1201016/1 NAVY BLUE  
95/1201016/12 SKY BLUE  
95/1201016/21 PINK

MATERIALS: 100% JACQUARD SILK, MADE IN ITALY

# Design 4



REFERENCES:	95/1201017/3	PISTACHIO
	95/1201017/4	YELLOW
	95/1201017/9	ORANGE
	95/1201017/2	DARK PINK
	95/1201017/8	LILAC
	95/1201017/21	PINK
	95/1201017/1	SKY BLUE
	95/1201017/11	NAVY BLUE
	95/1201017/22	RED
	95/1201017/31	GREEN
	95/1201017/81	PURPLE
	95/1201017/6	BLACK

MATERIALS: 100% JACQUARD SILK, MADE IN ITALY

# Design 5



REFERENCES:	95/1201019/1	BLUE / LIGHT BLUE
	95/1201019/8	BLUE / VIOLET
	95/1201019/2	BLUE / RED
	95/1201019/9	BLUE / ORANGE
	95/1201019/11	BLUE / NAVY BLUE
	95/1201019/21	RED / NAVY BLUE
	95/1201019/13	GREY / NAVY BLUE
	95/1201019/4	YELLOW
	95/1201019/91	ORANGE
	95/1201019/81	LILAC
	95/1201019/22	PINK
	95/1201019/3	GREEN
	95/1201019/12	SKY BLUE

MATERIALS: 100% JACQUARD SILK, MADE IN ITALY

# Design 6



REFERENCES:	95/1201028/1	NAVY BLUE
	95/1201028/8	DARK VIOLET
	95/1201028/2	CLARET
	95/1201028/5	BROWN / ORANGE
	95/1201028/6	GREEN
	95/1201028/11	BLUE
	95/1201028/12	ACQUA
	95/1201028/81	VIOLET
	95/1201028/21	RED
	95/1201028/3	PISTACHIO
	95/1201028/51	BROWN
	95/1201028/13	BLUE / GREEN
	95/1201028/14	BLUE / SKY BLUE
	95/1201028/15	BLUE / LILAC
	95/1201028/16	BLUE / FUCHSIA
	95/1201028/17	BLUE / YELLOW
	95/1201028/61	BLACK / WHITE

MATERIALS: 100% JACQUARD SILK, MADE IN ITALY



# *Cubes Ties*



REFERENCES:	95/1201031/61	GREY BLUE
	95/1201031/1	NAVY BLUE
	95/1201031/13	PASTEL BLUE
	95/1201031/31	BOTTLE GREEN
	95/1201031/52	BROWN
	95/1201031/41	OCHRE
	95/1201031/2	RUBY
	95/1201031/21	PINK
	95/1201031/53	RUST
	95/1201031/42	GOLD
	95/1201031/5	CHOCOLATE BROWN
	95/1201031/51	BEIGE

MATERIALS: 100% JACQUARD SILK. ENTIRELY HAND SEWN, THIS SEVEN-FOLD TIE TAKES AS MUCH AS FIVE TIMES MORE MAN HOURS AND TWICE AS MUCH SILK TO MANUFACTURE THAN A NORMAL TIE.

# Club



REFERENCES: 95/1201111/2 CLARET  
95/1201111/6 BLACK  
95/1201111/1 NAVY BLUE  
95/1201111/11 NAVY BLUE / WHITE  
95/1201111/91 PINK / BLUE  
95/1201111/27 RED / CREAM

MATERIALS: 100% JACQUARD SILK

CAN BE DELIVERED UNTIL STOCK RUNS OUT

## *Gift boxes*



- REFERENCES: 94/3036 BLUE LEATHER GIFT BOX FOR  
ONE PAIR OF CUFFLINKS GRAIN D'ORGE (75/6736)  
ONE MONEY HOLDER GRAIN D'ORGE (95/6018)  
ONE ROLLER GRAIN D'ORGE (95/8089)
- 94/3005 BLACK LEATHER GIFT BOX FOR  
ONE PAIR OF CUFFLINKS MILLE MIGLIA (75/8331)  
ONE ROLLER RACING (95/8031)

## *Gift boxes*



REFERENCES: 94/3004

BLACK LEATHER GIFT BOX FOR  
ONE WALLET RACING (95/7035)  
ONE BALL POINT PEN RACING (95/8001)

94/3026

BLUE LEATHER GIFT BOX FOR  
ONE BLACK WALLET "IL CLASSICO" (95/7110)  
ONE BALL POINT PEN "ALLEGRO" (95/8104)

# Key Rings



REFERENCES: A 95/200940 KEY RING "C" REVOLVING BRASS WITH PALLADIUM FINISH,  
MADE IN ITALY

B 95/7118 KEY RING TRIO LAITON COLORED IN YELLOW GOLD, PALLADIUM &  
ROSE GOLD DELIVERED IN A ROUND BOX, MADE IN ITALY

## *Phone Straps Set*



REFERENCE: 95/7117 SET FOR HER WITH MOBILE HOLDER

COLOURS: BLACK, TURQUOISE AND PINK TWILLY

MATERIALS: BRASS WITH PALLADIUM FINISH, MADE IN ITALY

# Phone Straps Logomania



REFERENCES:	A	95/7092	SKY BLUE
	B	95/7091	YELLOW
	C	95/7090	GREEN PASTEL
	D	95/7094	PINK
	E	95/7089	BEIGE
	F	95/7093	BLACK

## *Phone Straps Racing*



REFERENCES: 95/7049      PHONE STRAP BLACK, LEATHER & RUBBER, MADE IN ITALY  
95/7050      PHONE STRAP PINK, LEATHER & RUBBER, MADE IN ITALY



## *Key Ring Racing*



REFERENCE: 95/200937 KEY RING RACING

MATERIALS: STEEL AND RUBBER, MADE IN ITALY

DIMENSIONS: 10 CM LENGTH, Ø 4 CM, 44 G, BLACK

## Key Rings Cube



REFERENCES: 95/200938 YELLOW GOLD PLATED

95/200939 WHITE GOLD PLATED

MATERIALS: STERLING SILVER 925

WEIGHT: 28 G

# Bracelet



REFERENCES:	95/1300	BRACELET RACING	BLACK
	95/1301	BRACELET RACING	RED
	95/1302	BRACELET RACING	PINK

MATERIALS: STERLING SILVER AND RUBBER, MADE IN ITALY

CAN BE DELIVERED UNTIL STOCK RUNS OUT

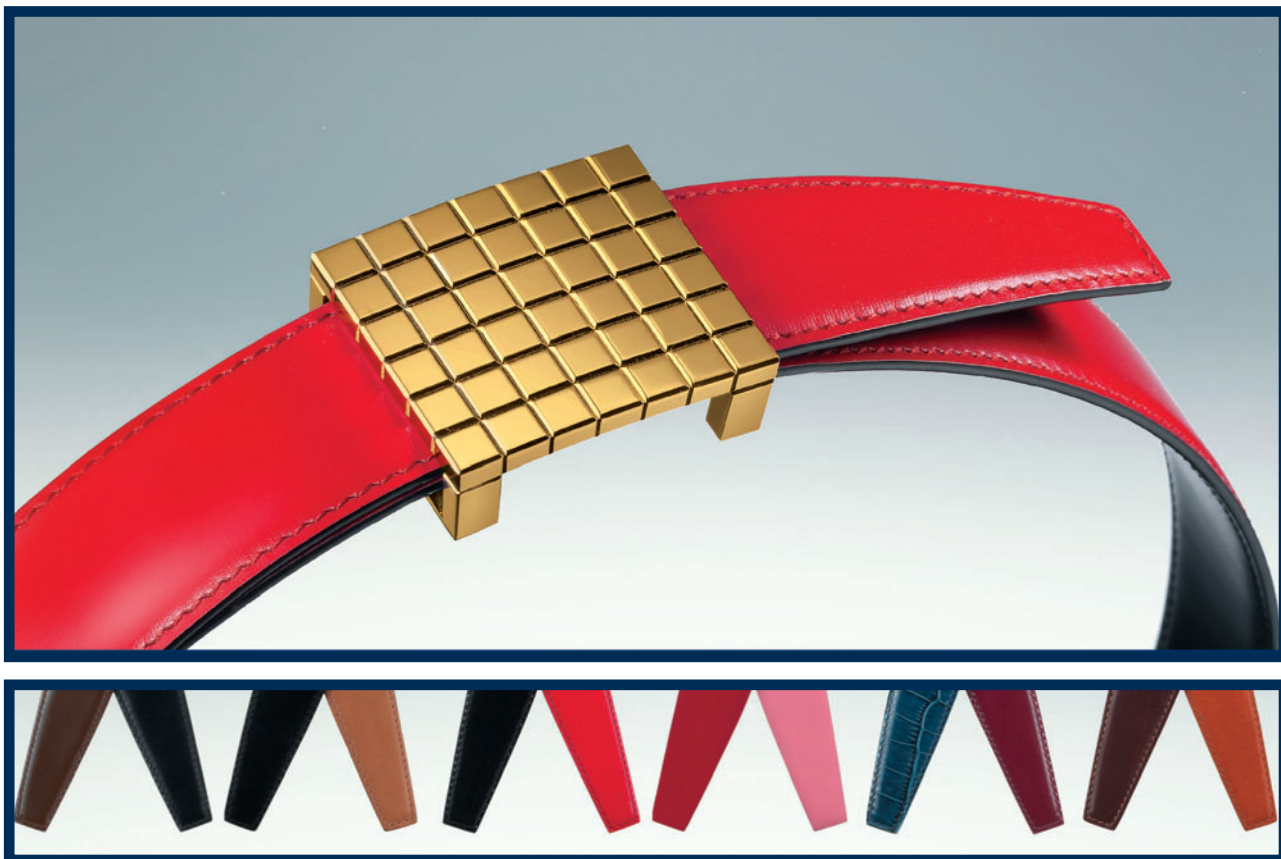
## *José Carreras Foundation Candle*



REFERENCE: 95/200936  
MATERIALS: PARRAFIN BASE, PEONY AROMA  
DIMENSIONS: Ø 80 MM X 105 MM  
WEIGHT: 280 G

CAN BE DELIVERED UNTIL STOCK RUNS OUT

# Chopard Belt - Full Buckle

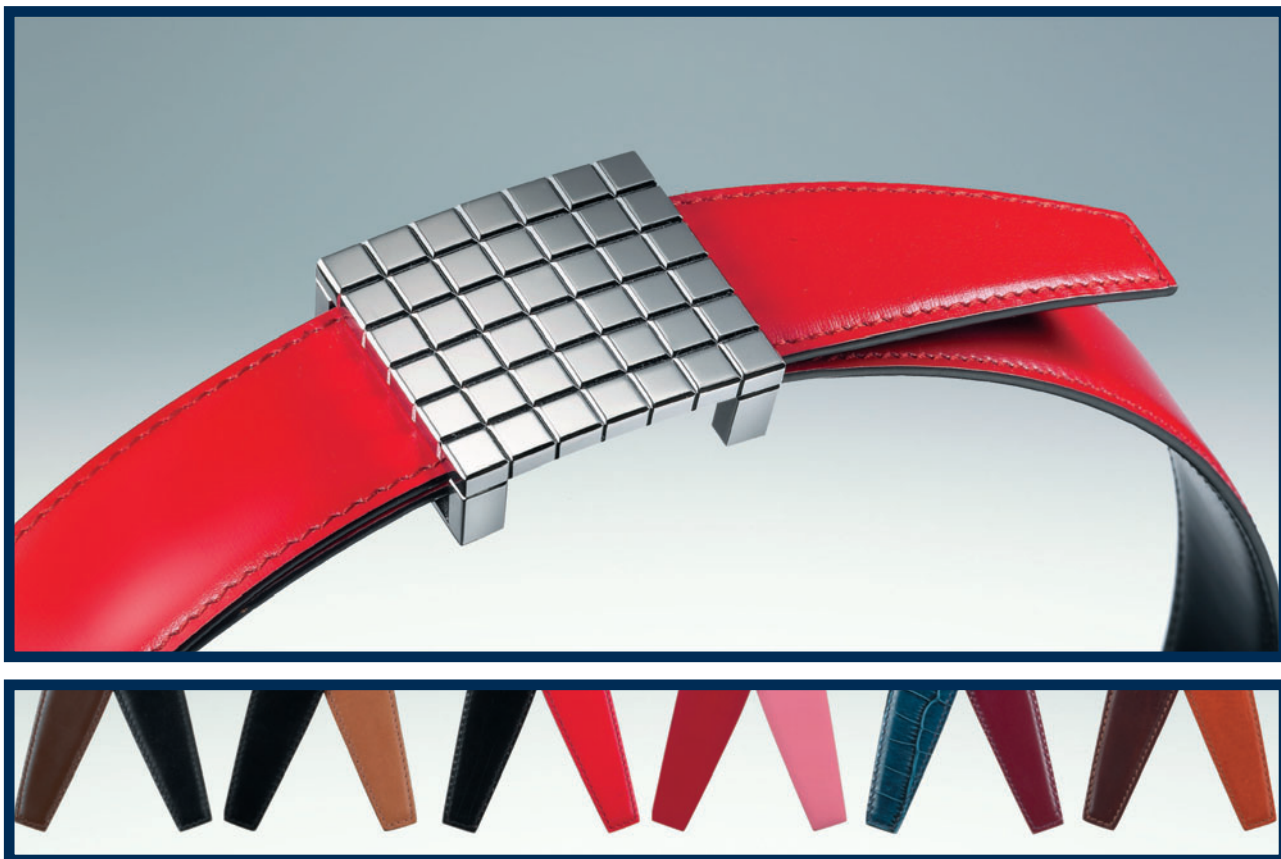


	CHOPARD BELT	LEATHER ONLY		BUCKLE ONLY	
REFERENCES:	95/1033033/165	95/2234/165	SMALL	- BLACK / BROWN	95/1033033
	95/1033033/167	95/2234/167	SMALL	- BLACK / BEIGE	
	95/1033033/162	95/2234/162	SMALL	- BLACK / RED	
	95/1033033/122	95/2234/122	SMALL	- RED / PINK	
	95/1033033/154	95/2234/154	SMALL	- BROWN / YELLOW	
	95/1033033/265	95/2234/265	MEDIUM	- BLACK / BROWN	
	95/1033033/267	95/2234/267	MEDIUM	- BLACK / BEIGE	
	95/1033033/262	95/2234/262	MEDIUM	- BLACK / RED	
	95/1033033/212	95/2234/212	MEDIUM	- BLUE / RED	
	95/1033033/365	95/2234/365	LARGE	- BLACK / BROWN	
	95/1033033/367	95/2234/367	LARGE	- BLACK / BEIGE	
	95/1033033/362	95/2234/362	LARGE	- BLACK / RED	
	95/1033033/322	95/2234/322	LARGE	- RED / PINK	
	95/1033033/354	95/2234/354	LARGE	- BROWN / YELLOW	
	95/1033033/465	95/2234/465	EXTRA LARGE	- BLACK / BROWN	
	95/1033033/467	95/2234/467	EXTRA LARGE	- BLACK / BEIGE	
	95/1033033/462	95/2234/462	EXTRA LARGE	- BLACK / RED	
	95/1033033/454	95/2234/454	EXTRA LARGE	- BROWN / YELLOW	

MATERIALS: STERLING SILVER BUCKLE, REVERSIBLE CALF LEATHER BELT  
 DIMENSIONS: SMALL - 65 CM  
 MEDIUM - 80 CM  
 LARGE - 95 CM  
 EXTRA LARGE - 110 CM

CAN BE DELIVERED UNTIL STOCK RUNS OUT

# Chopard Belt - Full Buckle



	CHOPARD BELT	LEATHER ONLY		BUCKLE ONLY	
REFERENCES:	95/1033031/165	95/2234/165	SMALL	- BLACK / BROWN	95/1033031
	95/1033031/167	95/2234/167	SMALL	- BLACK / BEIGE	
	95/1033031/162	95/2234/162	SMALL	- BLACK / RED	
	95/1033031/112	95/2234/112	SMALL	- BLUE / RED	
	95/1033031/154	95/2234/154	SMALL	- BROWN / YELLOW	
	95/1033031/265	95/2234/265	MEDIUM	- BLACK / BROWN	
	95/1033031/267	95/2234/267	MEDIUM	- BLACK / BEIGE	
	95/1033031/262	95/2234/262	MEDIUM	- BLACK / RED	
	95/1033031/365	95/2234/365	LARGE	- BLACK / BROWN	
	95/1033031/367	95/2234/367	LARGE	- BLACK / BEIGE	
	95/1033031/362	95/2234/362	LARGE	- BLACK / RED	
	95/1033031/322	95/2234/322	LARGE	- RED / PINK	
	95/1033031/312	95/2234/312	LARGE	- BLUE / RED	
	95/1033031/465	95/2234/465	EXTRA LARGE	- BLACK / BROWN	
	95/1033031/467	95/2234/467	EXTRA LARGE	- BLACK / BEIGE	
	95/1033031/462	95/2234/462	EXTRA LARGE	- BLACK / RED	
	95/1033031/412	95/2234/412	EXTRA LARGE	- BLUE / RED	

MATERIALS: STERLING SILVER BUCKLE, REVERSIBLE CALF LEATHER BELT  
 DIMENSIONS: SMALL - 65 CM  
 MEDIUM - 80 CM  
 LARGE - 95 CM  
 EXTRA LARGE - 110 CM

CAN BE DELIVERED UNTIL STOCK RUNS OUT

# Chopard Belt - Empty Buckle

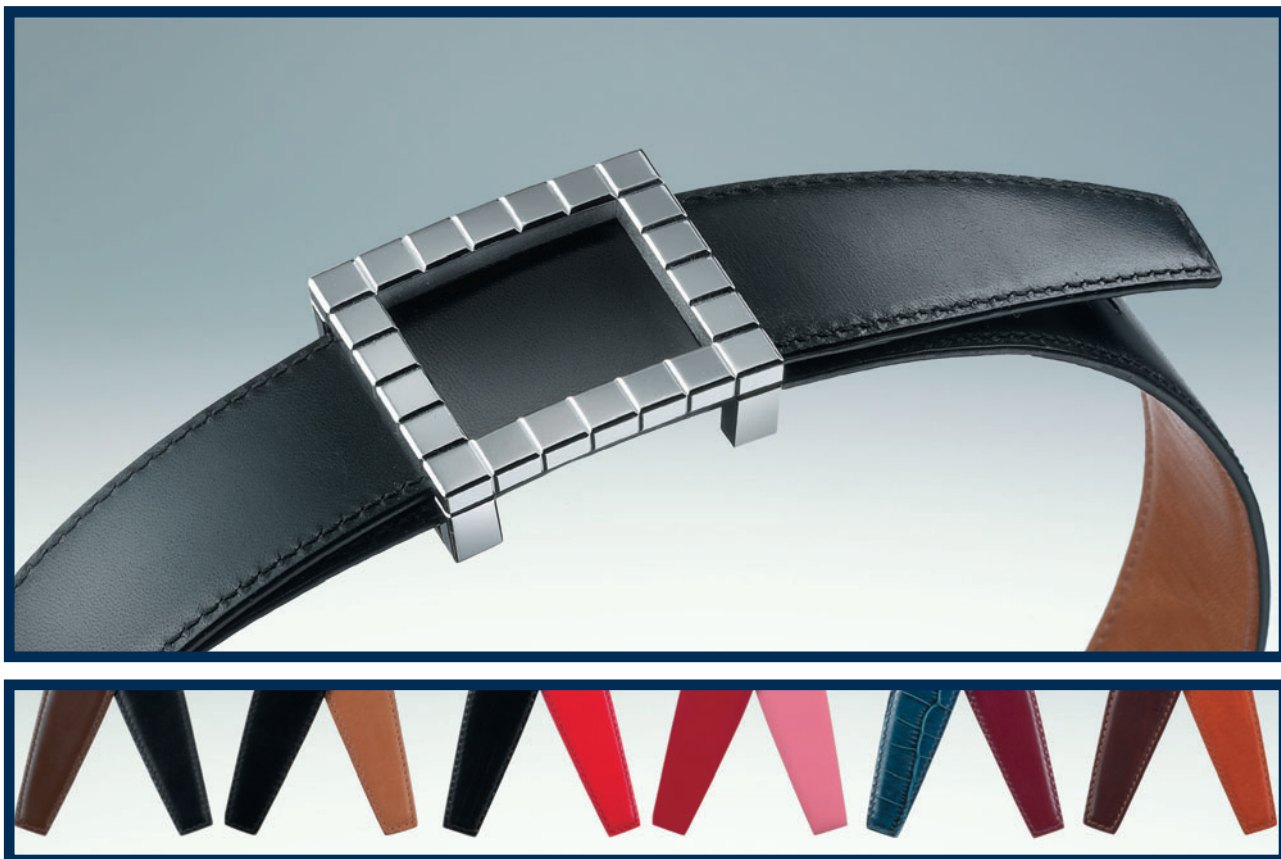


	CHOPARD BELT	LEATHER ONLY		BUCKLE ONLY	
REFERENCES:	95/1033034/165	95/2234/165	SMALL	- BLACK / BROWN	95/1033034
	95/1033034/167	95/2234/167	SMALL	- BLACK / BEIGE	
	95/1033034/162	95/2234/162	SMALL	- BLACK / RED	
	95/1033034/122	95/2234/122	SMALL	- RED / PINK	
	95/1033034/154	95/2234/154	SMALL	- BROWN / YELLOW	
	95/1033034/265	95/2234/265	MEDIUM	- BLACK / BROWN	
	95/1033034/267	95/2234/267	MEDIUM	- BLACK / BEIGE	
	95/1033034/262	95/2234/262	MEDIUM	- BLACK / RED	
	95/1033034/212	95/2234/212	MEDIUM	- BLUE / RED	
	95/1033034/365	95/2234/365	LARGE	- BLACK / BROWN	
	95/1033034/367	95/2234/367	LARGE	- BLACK / BEIGE	
	95/1033034/362	95/2234/362	LARGE	- BLACK / RED	
	95/1033034/322	95/2234/322	LARGE	- RED / PINK	
	95/1033034/354	95/2234/354	LARGE	- BROWN / YELLOW	
	95/1033034/465	95/2234/465	EXTRA LARGE	- BLACK / BROWN	
	95/1033034/467	95/2234/467	EXTRA LARGE	- BLACK / BEIGE	
	95/1033034/462	95/2234/462	EXTRA LARGE	- BLACK / RED	
	95/1033034/454	95/2234/454	EXTRA LARGE	- BROWN / YELLOW	

MATERIALS: STERLING SILVER BUCKLE, REVERSIBLE CALF LEATHER BELT  
 DIMENSIONS: SMALL - 65 CM  
 MEDIUM - 80 CM  
 LARGE - 95 CM  
 EXTRA LARGE - 110 CM

CAN BE DELIVERED UNTIL STOCK RUNS OUT

# Chopard Belt - Empty Buckle



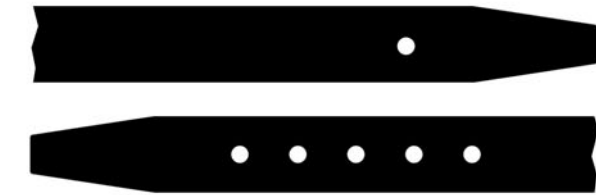
	CHOPARD BELT	LEATHER ONLY		BUCKLE ONLY	
REFERENCES:	95/1033032/165	95/2234/165	SMALL	- BLACK / BROWN	95/1033032
	95/1033032/167	95/2234/167	SMALL	- BLACK / BEIGE	
	95/1033032/162	95/2234/162	SMALL	- BLACK / RED	
	95/1033032/265	95/2234/265	MEDIUM	- BLACK / BROWN	
	95/1033032/267	95/2234/267	MEDIUM	- BLACK / BEIGE	
	95/1033032/262	95/2234/262	MEDIUM	- BLACK / RED	
	95/1033032/222	95/2234/222	MEDIUM	- RED / PINK	
	95/1033032/254	95/2234/254	MEDIUM	- BROWN / YELLOW	
	95/1033032/365	95/2234/365	LARGE	- BLACK / BROWN	
	95/1033032/367	95/2234/367	LARGE	- BLACK / BEIGE	
	95/1033032/362	95/2234/362	LARGE	- BLACK / RED	
	95/1033032/322	95/2234/322	LARGE	- RED / PINK	
	95/1033032/312	95/2234/312	LARGE	- BLUE / RED	
	95/1033032/465	95/2234/465	EXTRA LARGE	- BLACK / BROWN	
	95/1033032/467	95/2234/467	EXTRA LARGE	- BLACK / BEIGE	
	95/1033032/462	95/2234/462	EXTRA LARGE	- BLACK / RED	

MATERIALS: STERLING SILVER BUCKLE, REVERSIBLE CALF LEATHER BELT  
 DIMENSIONS: SMALL - 65 CM  
 MEDIUM - 80 CM  
 LARGE - 95 CM  
 EXTRA LARGE - 110 CM

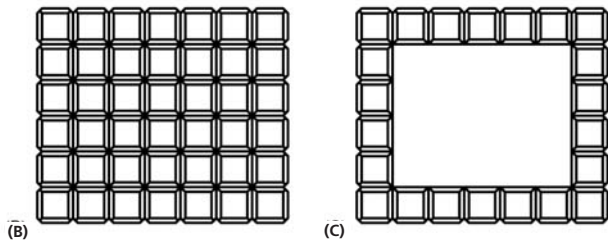
CAN BE DELIVERED UNTIL STOCK RUNS OUT



# Silver Belt

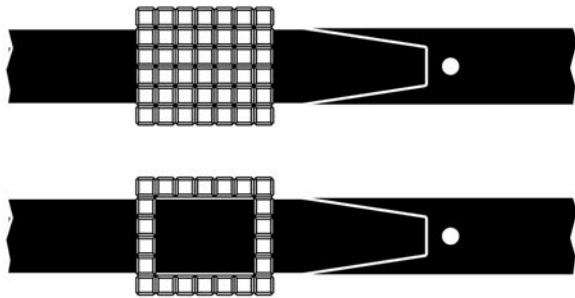


(A)

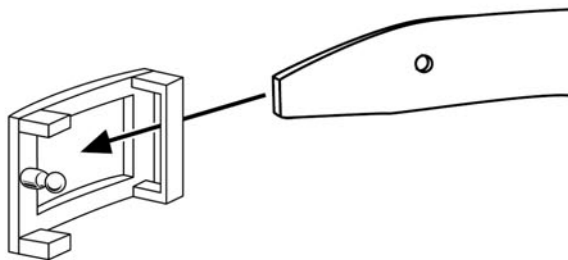


(B)

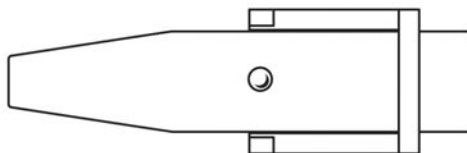
(C)



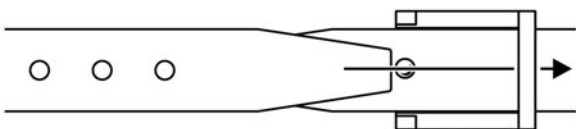
(1)



(2)



(3)



## THE CHOPARD BELT

THE LATEST NEWCOMER TO THE LINE OF CHOPARD ACCESSORIES, THE REVERSIBLE TWO-TONE BELT (A) COMES IN TWO VERSIONS : SOLID BUCKLE (B) AND HOLLOW BUCKLE (C): IT IS AVAILABLE IN SIX COLOUR COMBINATIONS - BLACK/BROWN, BLACK/BEIGE, BLACK/RED, RED/PINK, BLUE/RED AND BROWN/YELLOW AND IN FOUR SIZES- S (65 CM), M (80 CM), L (95 CM) AND XL (110 CM). ENTIRELY CRAFTED IN HAND-STITCHED NATURAL LEATHER, IT FEATURES A SOLID 925 SILVER BUCKLE THAT LENDS A STUNNINGLY ELEGANT TOUCH.

## FITTING THE BUCKLE

- SLIDE THE END OF THE BELT WITH JUST ONE NOTCH INTO THE BUCKLE (FIG.1)
- FASTEN THE STUD OF THE BUCKLE INSIDE THE NOTCH OF THE BELT (FIG.2)
- PLACE THE BELT AROUND THE WAIST
- SLIDE THE SECOND END WITH SEVERAL NOTCHES INSIDE THE BUCKLE AND ADJUST THE LENGTH BY FASTENING THE STUD OF THE BUCKLE INSIDE THE CHOSEN NOTCH (FIG.3)

## CARING FOR YOUR BELT

A PIECE OF JEWELLERY IN ITS OWN RIGHT, THE SILVER BUCKLE IS A DELICATE OBJECT. TO ENSURE IT RE-MAINS BEAUTIFUL OVER THE LONG TERM, WE RECOMMEND THAT YOU TAKE PARTICULAR CARE OF IT. CLEAN IT REGULARLY USING A CLOTH SLIGHTLY MOISTENED WITH LUKEWARM SOAPY WATER, BUT WITHOUT RUBBING. DRY IT BY DABBING GENTLY WITH A SOFT DRY CLOTH.

## LA CEINTURE CHOPARD

DERNIÈRE-NÉE DE LA LIGNE D'ACCESSOIRES CHOPARD, LA CEINTURE EN CUIR BICOLORE RÉVERSIBLE (A), DÉCLINÉE EN DEUX VERSIONS: BOUCLE PLEINE (B) ET BOUCLE ÉVIDÉE (C). ELLE EST DISPONIBLE EN SIX COMBINAISONS DE COULEURS - NOIR/BRUN, NOIR/BEIGE, NOIR/ROUGE, ROUGE/ROSE, BLEU/ROUGE ET BRUN/JAUNE, ET EN QUATRE TAILLES - S (65 CM), M (80 CM), L (95 CM) ET XL (110 CM). ENTièrement CONFECTIONNÉE EN CUIR NATUREL ET COUSUE MAIN, ELLE POSSÈDE UNE BOUCLE EN ARGENT MASSIF 925 QUI LUI CONFÈRE UNE ÉLÉGANCE RARE.

## MISE EN PLACE DE LA BOUCLE

- GLISSEZ L'EXTRÉMITÉ DE LA CEINTURE COMPORTANT UN SEUL CRAN DANS LA BOUCLE (FIG.1).
- FIXEZ LE CRAN DE LA CEINTURE SUR L'ARDILLON DE LA BOUCLE (FIG. 2).
- METTEZ VOTRE CEINTURE AUTOUR DE LA TAILLE.
- GLISSEZ LA SECONDE EXTRÉMITÉ COMPORTANT PLUSIEURS CRANS À L'INTÉRIEUR DE LA BOUCLE ET AJUSTEZ LA LONGUEUR EN FIXANT LE CRAN CHOISI SUR L'ARDILLON (FIG.3).

## L'ENTRETIEN

BIJOU EN ELLE-MÊME, LA BOUCLE EN ARGENT EST UN OBJET FRAGILE. AFIN QU'ELLE CONSERVE LONGTEMPS SA BEAUTÉ, NOUS VOUS RECOMMANDONS DE L'ENTREtenir AVEC PRÉCAUTION. PASSEZ RÉGULIÈREMENT, MAIS SANS FROTTER, UN CHIFFON LÉGÈREMENT HUMECTÉ D'EAU TIÈDE SAVONNEUSE. SÉCHEZ EN TAMPONNANT DOUCEMENT AVEC UN CHIFFON DOUX ET SEC.

## DER CHOPARD-GÜRTEL

LETZTE NEUHEIT DER CHOPARD ACCESSOIRES LINIE IST DER BEIDSEITIG TRAGBARE GÜRTEL IN ZWEIFARBIGEM LEDER, DER IN ZWEI AUSFÜHREN ERHÄLTlich IST: MASSIVE SCHLIEßE (B) UND EINFACHE SCHLIEßE (C). ER IST IN SECHS FARBKOMBINATIONEN LIEFERBAR - SCHWARZ/BRAUN, SCHWARZ/BEIGE, SCHWARZ/ROT, ROT/ROSA, BLAU/ROT UND BRAUN/GELB, UND IN VIER GRÖßEN - S (65 CM), M (80 CM), L (95 CM) UND XL (110 CM). ER IST GANZ AUS NATURLEDER HERGESTELLT UND VON HAND GENÄHT, BESITZT EINE SCHLIEßE AUS MASSIVEM SILBER 925, DIE IHM EINE BESONDERS ELEGANTE NOTE VERLEIHT.

## EINSTELLUNG DER SCHLIEßE

- SCHIEBEN SIE DAS MIT EINEM LOCH VERSEHENE ENDE DES GÜRTELS IN DIE SCHLIEßE (BILD 1).
- BEFESTIGEN SIE DEN SCHLIEßENDORN IM GÜRTELLOCH (BILD 2).
- LEGEN SIE DEN GÜRTEL UM IHRE TAILLE.
- SCHIEBEN SIE DAS ANDERE ENDE MIT MEHREREN LÖCHERN NACH INNEN IN DIE SCHLIEßE UND STELLEN SIE DIE RICHTIGE LÄNGE EIN, INDEM SIE DEN DORN IN DEM PASSENDEN LOCH BEFESTIGEN (BILD 3).

## PFLÉGE

DIESE SILBERNE SCHLIEßE IST EIN ECHTES SCHMUCKSTÜCK. DAMIT SIE LANGE IHR SCHÖNES AUSSEHEN BEHÄLT, EMPFEHLEN WIR IHNEN SIE BEHUTSAM ZU BEHANDeln. REINIGEN SIE SIE REGELMÄßIG MIT EINEM FEUCHTEN TUCH UND SEIFENWASSER, OHNE ZU REIBEN. WISCHEN SIE SIE DANACH MIT EINEM WEICHEN, TROCKENEN TUCH AB.

# Be Happy

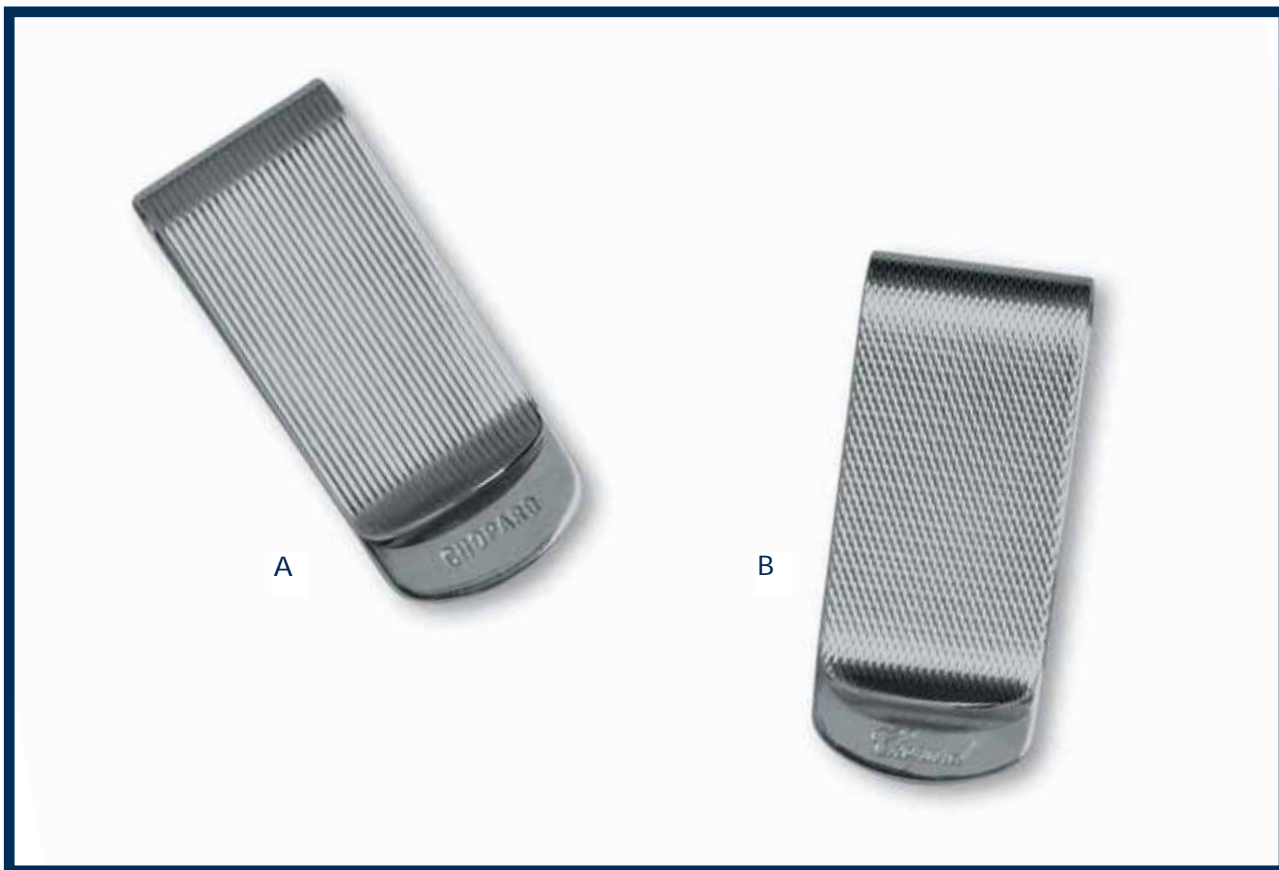


REFERENCES: 97/210-006061 BLACK  
97/210-006063 BLUE  
97/210-006065 RED

MATERIALS: ACETATE FRAME AND TEMPLES  
CR39 FIRST QUALITY LENSES WHICH OFFER 100% UV PROTECTION  
DELIVERED WITH A SPECIAL BE HAPPY BAG

CAN BE DELIVERED UNTIL STOCK RUNS OUT

# *Money Holder*



REFERENCES: A 95/6019 MONEY HOLDER

LIGNE

B 95/6018 MONEY HOLDER

GRAIN D'ORGE

MATERIALS: STERLING SILVER 925

DIMENSIONS: 5,4X2,9 CM

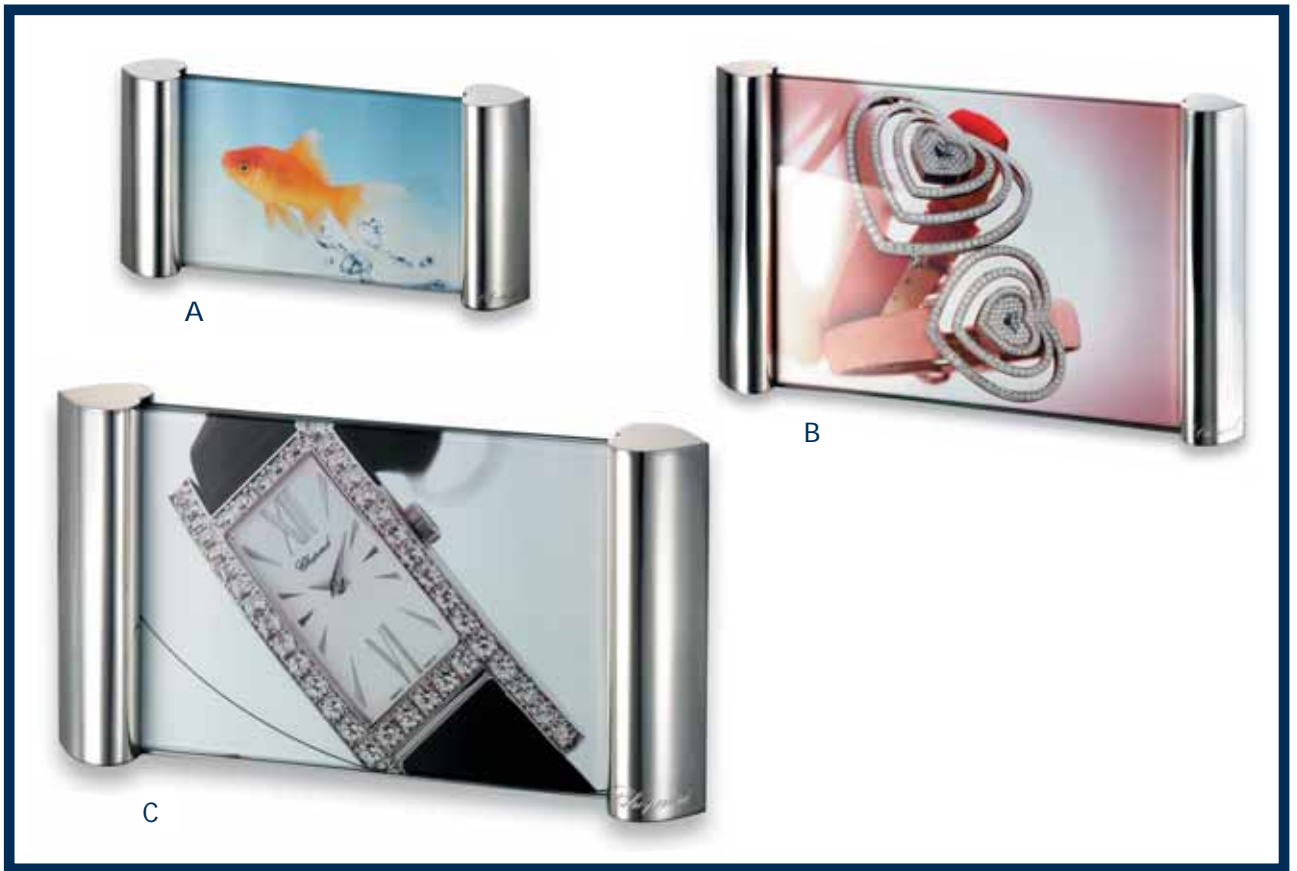
# *Cufflinks*



REFERENCE: 75/6736 CUFFLINKS "GRAIN D'ORGE"

MATERIALS: STERLING SILVER 925

# *Love Horizontal Picture Frame*



## A HORIZONTAL PICTURE SMALL

REFERENCE: 95/6020  
MATERIALS: STERLING SILVER 925  
DIMENSIONS: 10X15 CM  
WEIGHT : 595 G

## B HORIZONTAL PICTURE MEDIUM

REFERENCE: 95/6021  
MATERIALS: STERLING SILVER 925  
DIMENSIONS: 13X18 CM  
WEIGHT : 830 G

## C HORIZONTAL PICTURE LARGE

REFERENCE: 95/6022  
MATERIALS: STERLING SILVER 925  
DIMENSIONS: 18X24 CM  
WEIGHT : 1340 G

# *Love Vertical Picture Frame*



## A VERTICAL PICTURE LARGE

REFERENCE: 95/6023  
MATERIALS: STERLING SILVER 925  
DIMENSIONS: 18X24 CM  
WEIGHT : 1000 G

## B VERTICAL PICTURE MEDIUM

REFERENCE: 95/6024  
MATERIALS: STERLING SILVER 925  
DIMENSIONS: 20X20 CM  
WEIGHT : 930 G

## C VERTICAL PICTURE SMALL

REFERENCE: 95/6025  
MATERIALS: STERLING SILVER 925  
DIMENSIONS: 7X7 CM  
WEIGHT : 170 G

# *Chalet Picture Frame*



REFERENCE: 95/6026

MATERIALS: STERLING SILVER 925

DIMENSIONS: 30X23 CM

WEIGHT : 875 G

# Baby Gift



REFERENCES: 95/5020 BABY FRAME

95/5021 BOX "FIRST TOOTH" WITH TEDDY

MATERIALS: STERLING SILVER 925

DIMENSIONS: BABY FRAME: 13,8 CM X 15,8 CM, 249 G  
"FIRST TOOTH" BOX : Ø 2,5 CM X 4 CM, 17 G



# *Butterflies Collection*



## SALT & PEPPER SHAKER

REFERENCE: 95/6014  
MATERIALS: STERLING SILVER  
DIMENSIONS: 62 X 49 X 51 MM  
WEIGHT : 196 G

## SPOON

REFERENCE: 95/6010  
MATERIALS: STERLING SILVER  
DIMENSIONS: 136 X 26 X 13 MM  
WEIGHT : 41 G

## EGGBELL

REFERENCE: 95/6000  
MATERIALS: STERLING SILVER  
DIMENSIONS: Ø 101 X 130 MM  
WEIGHT : 233 G

## RECTANGULAR PIN-TRAY

REFERENCE: 95/6001  
MATERIALS: STERLING SILVER  
DIMENSIONS: 170 X 142 X 18 MM  
WEIGHT : 343 G

## CUP

REFERENCE: 95/6007  
MATERIALS: STERLING SILVER  
DIMENSIONS: Ø 65 X 70 MM  
WEIGHT : 84 G

CAN BE DELIVERED UNTIL STOCK RUNS OUT

# *Butterflies Collection*



## CHEESE KNIFE

REFERENCE: 95/6011  
MATERIALS: STERLING SILVER  
DIMENSIONS: 150 X 34 MM  
WEIGHT : 87 G

## LETTER OPENER

REFERENCE: 95/6009  
MATERIALS: STERLING SILVER  
DIMENSIONS: 200 X 53 X 5,5 MM  
WEIGHT : 116 G

## BOTTLE-OPENER

REFERENCE: 95/6013  
MATERIALS: STERLING SILVER  
DIMENSIONS: 137 X 45 X 20 MM  
WEIGHT : 85 G

## RULER

REFERENCE: 95/6008  
MATERIALS: STERLING SILVER  
DIMENSIONS: 200 X 53 X 5 MM  
WEIGHT : 117 G

## MONEY HOLDER

REFERENCE: 95/6003  
MATERIALS: STERLING SILVER  
DIMENSIONS: Ø 45 X 1,5 MM  
WEIGHT : 11 G

CAN BE DELIVERED UNTIL STOCK RUNS OUT

# *Hearts Picture Frames*



## HEART LARGE

REFERENCE: 95/5520-23  
MATERIALS: STERLING SILVER 925  
DIMENSIONS: 140 X 125 X 12 MM  
WEIGHT : 224 G

## HEART MEDIUM

REFERENCE: 95/5519-23  
MATERIALS: STERLING SILVER 925  
DIMENSIONS: 110 X 80 X 12 MM  
WEIGHT : 123 G

## HEART SMALL

REFERENCE: 95/5518-23  
MATERIALS: STERLING SILVER 925  
DIMENSIONS: 60 X 50 X 12 MM  
WEIGHT : 92 G

# Silverware



## HEART KEY RING WITH SAPPHIRE CABOCHON

REFERENCE: 95/5514-23  
MATERIALS: STERLING SILVER  
DIMENSIONS: 21 X 19 X 3 MM  
WEIGHT : 18 G

## HEART PILLBOX

REFERENCE: 95/5516  
MATERIALS: STERLING SILVER  
DIMENSIONS: 45 X 45 X 25 MM  
WEIGHT : 32 G

## HEART KEY RING

REFERENCE: 95/5513  
MATERIALS: STERLING SILVER  
DIMENSIONS: 21 X 19 X 3 MM  
WEIGHT : 18 G

## HEART PILLBOX WITH SAPPHIRE CABOCHON

REFERENCE: 95/5516-23  
MATERIALS: STERLING SILVER  
DIMENSIONS: 45 X 45 X 25 MM  
WEIGHT : 32 G

## DICE PILLBOX

REFERENCE: 95/5515  
MATERIALS: STERLING SILVER  
DIMENSIONS: 20 X 20 X 20 MM  
WEIGHT : 22 G

## HEART PIN TRAY

REFERENCE: 95/5022  
MATERIALS: STERLING SILVER  
DIMENSIONS: 70 X 72 X 11 MM  
WEIGHT : 46 G

CAN BE DELIVERED UNTIL STOCK RUNS OUT

# Silverware



## FLASK

REFERENCE: 95/5517  
MATERIALS: STERLING SILVER  
DIMENSIONS: 106 X 64 X 25 MM  
WEIGHT : 130 G

## TWO CUPS IN A DARK GREEN LEATHER CASE

REFERENCE: 95/5512  
MATERIALS: STERLING SILVER  
DIMENSIONS: Ø 50 X 92 MM  
WEIGHT : 110 G

## PEPPER MILL

REFERENCE: 95/5224  
MATERIALS: STERLING SILVER  
DIMENSIONS: 48 X 40 X 18 MM  
WEIGHT : 105 G

CAN BE DELIVERED UNTIL STOCK RUNS OUT

# Crystal



## SET OF TWO LONG DRINK GLASSES

REFERENCE: 95/1815  
MATERIALS: CRYSTAL  
DIMENSIONS: Ø76 X 136 MM  
WEIGHT: 420 G

## SET OF TWO WHISKY GLASSES

REFERENCE: 95/1810  
MATERIALS: CRYSTAL  
DIMENSIONS: Ø90 X 97.5 MM  
WEIGHT: 602 G

# *Crystal*



## SET OF SIX VODKA GLASSES

REFERENCE: 95/1811  
MATERIALS: CRYSTAL  
DIMENSIONS: 70X50X21 MM  
WEIGHT: 84 G

# Happy Snow Coffee & Tea Set



## COFFEE SET (2 CUPS, 2 SAUCERS)

REFERENCE: A 95/1580

MATERIALS: PORCELAINE DE LIMOGES, MADE IN FRANCE

DIMENSIONS: CUP Ø 6.0 CM, HEIGHT 5.8 CM  
SAUCER Ø 12.2 CM, HEIGHT 1.8 CM

WEIGHT: CUP 62 G, SAUCER 100 G

## TEA SET (2 CUPS, 2 SAUCERS)

REFERENCE: B 95/1581

MATERIALS: PORCELAINE DE LIMOGES, MADE IN FRANCE

DIMENSIONS: CUP Ø 8.2 CM, HEIGHT 5.5 CM  
SAUCER Ø 15.0 CM, HEIGHT 1.8 CM

WEIGHT: CUP 108 G, SAUCER 142 G



# Happy Snow Pin Trays



## PIN TRAY HAPPY SNOW SMALL

REFERENCE: 95/1582

MATERIALS: PORCELAINE DE LIMOGES, MADE IN FRANCE

DIMENSIONS: 10X10 CM

WEIGHT: 115 G

## PIN TRAY HAPPY SNOW MEDIUM

REFERENCE: 95/1583

MATERIALS: PORCELAINE DE LIMOGES, MADE IN FRANCE

DIMENSIONS: 18.5X18.5 CM

WEIGHT: 510 G

## PIN TRAY HAPPY SNOW LARGE

REFERENCE: 95/1584

MATERIALS: PORCELAINE DE LIMOGES, MADE IN FRANCE

DIMENSIONS: 30X30 CM

WEIGHT: 1850 G

## *Butterflies Tea Set*



### TEA SETS

REFERENCES: 95/1577      TEA SET BUTTERFLIES YELLOW GOLD COLOUR (2 CUPS, 2 SAUCERS)  
95/1575      TEA SET BUTTERFLIES PLATINUM COLOUR (2 CUPS, 2 SAUCERS)

MATERIALS:    PORCELAINE DE LIMOGES

DIMENSIONS: CUP Ø 8,2CM, HEIGHT 5,5CM  
SAUCER Ø 14,9CM, HEIGHT 2,4CM

WEIGHT:      CUP 119 G, SAUCER 146 G

## *Butterflies Coffee Set*



### COFFEE SETS

REFERENCES: 95/1576 COFFEE SET BUTTERFLIES YELLOW GOLD COLOUR (2 CUPS, 2 SAUCERS)

95/1574 COFFEE SET BUTTERFLIES PLATINUM COLOUR (2 CUPS, 2 SAUCERS)

MATERIALS: PORCELAINE DE LIMOGES

DIMENSIONS: CUP Ø 6,0CM, HEIGHT 5,8CM  
SAUCER Ø 12,1CM, HEIGHT 2,2CM

WEIGHT: CUP 87 G, SAUCER 104 G

# *Baby Set*



## BABY SET

REFERENCES: 95/1579      BABY SET BLUE

95/1578      BABY SET PINK

MATERIALS:    PORCELAINE DE LIMOGES

DIMENSIONS: CUP Ø 7,7CM, HEIGHT 7,7CM  
PLATE Ø 16,8CM, HEIGHT 3,0CM

WEIGHT: CUP 188 G, PLATE 289 G

# *Pin Trays*



## PIN TRAYS

REFERENCES: 95/1572 ASHTRAY ANTIQUE BLUE PLATINIUM  
95/1573 ASHTRAY ANTIQUE CLARET PLATINIUM

MATERIALS: PORCELAINE DE LIMOGES

DIMENSIONS: 20 X 16 CM

WEIGHT: 600G

LIMITED EDITION NUMBERED 500 PIECES ONLY